

# 2018

# catalog

CHAUVET

CHAUVET **3**

TRUSST 

2018



# 3



## Steps to become a **CHAUVET DJ VIP**

- 1** Sign up online for FREE
- 2** Register selected CHAUVET DJ gear purchased from authorized USA dealers & mail in original UPCs
- 3** Earn & redeem points for CHAUVET DJ gear

With our rewards program, you earn points every time you purchase select CHAUVET DJ gear from an authorized CHAUVET DJ dealer in the 48 contiguous United States.

Redeem your points to receive select CHAUVET DJ gear.



**Sign up!**

[chauvetdjvip.com](http://chauvetdjvip.com)



# Table of Contents



## VIDEO PANELS

Vivid 4 .....	5
Vivid Drive 23N .....	5



## MOVING HEADS & SCANNERS

Intimidator Hybrid 140SR .....	7
Intimidator Beam 140SR .....	7
Intimidator Spot 455Z .....	8
Intimidator Wash Zoom 450 .....	8
Intimidator Spot 375Z .....	8
Intimidator Spot 355 .....	8
<b>NEW</b> Intimidator Beam 355 .....	9
Intimidator Trio .....	9
Intimidator Spot 255 .....	9
Intimidator Spot Duo 155 .....	10
Intimidator Spot 155 .....	10
Intimidator Wave 360 .....	10
Intimidator Scan 305 .....	10



## BATTERY & WIRELESS

<b>NEW</b> Freedom Flex H4 IP .....	13
Freedom Flex Battery .....	13
<b>NEW</b> Freedom H1 .....	13
Freedom Stick .....	13
Freedom Stick Pack .....	13
Freedom Par Tri-6 .....	14
Freedom Par Quad-4 IP .....	14
Freedom Par Quad-4 .....	14
Freedom Par Hex-4 .....	14



## EXTERIOR

<b>NEW</b> Freedom Flex H4 IP .....	13
Freedom Par Quad-4 IP .....	14
COLORband PIX IP .....	17
SlimPANEL Tri 24 IP .....	17
Freedom Par Quad-4 IP .....	17
SlimPAR 56 IP .....	17
Festoon .....	38
Festoon VW .....	38



## GOBO PROJECTORS

EVE E-100Z .....	19
EVE E-50Z .....	19
EZGobo .....	27
Gobo Zoom USB .....	27



## WASH LIGHTS

EVE TF-20 .....	19
EVE F-50Z .....	19
<b>NEW</b> EVE P-150 UV .....	20
<b>NEW</b> EVE P-140 VW .....	20
<b>NEW</b> EVE P-130 RGB .....	20
SlimPAR Pro W USB .....	23
SlimPAR Pro Q USB .....	23
SlimPAR Pro H USB .....	23
<b>NEW</b> SlimPAR Pro QZ12 USB .....	23
<b>NEW</b> SlimPAR Q12 BT .....	25
<b>NEW</b> SlimPAR T12 BT .....	25
<b>NEW</b> COLORband T3 BT .....	25
EZpar 64 RGBA .....	26
EZpar 56 .....	26
EZpar T6 USB .....	26
EZwedge Tri .....	26
COREpar 80 USB .....	28
COREpar 40 USB .....	28
COREpar UV USB .....	28
Core 3x3 .....	28
COLORband PIX USB .....	29
COLORband H9 USB .....	29
COLORband PIX-M USB .....	29
COLORrail .....	29
COLORband T3 USB .....	30
COLORstrip .....	30
COLORstrip Mini .....	30
COLORpalette .....	30
SlimBANK T18 USB .....	31
SlimPAR QUV 12 USB .....	31
SlimPAR H6 USB .....	31
SlimPAR Q6 USB .....	31
SlimPAR Q12 USB .....	32
SlimPAR T12 USB .....	32
SlimPAR T6 USB .....	32
SlimPAR 64 .....	32
SlimPAR 64 RGBA .....	33
SlimPAR 56 .....	33
SlimPAR 38 .....	33
Wedge Tri .....	33



## SPOTLIGHTS

LED Pinspot 3 .....	34
LED Pinspot 2 .....	34
LED Followspot 75ST .....	34
LED Followspot 120ST .....	34



## LASERS

Scorpion Dual .....	35
Scorpion Storm FX RGB .....	35
EZ Laser RGFX .....	35



## EFFECTS

4BAR Tri USB .....	36
4BAR USB .....	36
4BAR LT USB .....	36

4BAR Flex T USB .....	36
GigBAR 2 .....	37
<b>NEW</b> GigBAR Flex .....	37
6SPOT .....	37
4PLAY .....	37
MotionOrb .....	38
Festoon .....	38
Festoon VW .....	38
MotionDrape LED .....	38
MotionSet LED .....	38
<b>NEW</b> Wash FX 2 .....	39
FXarray Q5 .....	39
FXpar 3 .....	39
Abyss USB .....	39
Helicopter Q6 .....	40
Swarm Wash FX .....	40
Swarm 5 FX .....	40
Swarm 4 FX .....	40
SlimBEAM Quad .....	41
Rotosphere Q3 .....	41
Derby X .....	41
<b>NEW</b> Line Dancer .....	41
Mini Kinta .....	42
Kinta FX .....	42
<b>NEW</b> Mushroom .....	42
JAM Pack Gold .....	42
DJ Bank .....	43
<b>NEW</b> Duo Moon .....	43
LX-5 .....	43
BOB LED .....	43



## BLACKLIGHTS

<b>NEW</b> Freedom Flex H4 IP .....	13
COREpar UV USB .....	45
<b>NEW</b> EVE P-150 UV .....	45
SlimSTRIP UV-18 .....	45
LED Shadow .....	45



## STROBES

<b>NEW</b> Shocker 2 Blinder .....	46
Shocker 90 .....	46
Shocker Panel 180 USB .....	46
Mini Strobe LED .....	46



## ATMOSPHERICS

Geyser P7 .....	47
Geyser P5 .....	47
Geyser T6 .....	47
Funfetti Shot .....	48
Snow Machine .....	48
Hurricane Haze 4D .....	48
Hurricane Haze 1DX .....	48
Hurricane Haze 2D .....	48
Hurricane 2000 .....	49
Hurricane 1800 Flex .....	49
Hurricane 1200 .....	49
Hurricane 1600 .....	49
Hurricane 1000 .....	49
Hurricane 1302 .....	49
Hurricane 700 .....	49
<b>NEW</b> Cumulus .....	50
Nimbus .....	50

Bubble King .....	51
Bubble Machine .....	51
Atmospheric Remotes .....	51
Atmospheric Fluids .....	51



## CONTROLLERS

<b>NEW</b> BTAir .....	24
FlareCON .....	52
FlareCON Air .....	52
SoundSwitch .....	52
ShowXpress .....	53
Xpress 512 Plus .....	53
Xpress 512 .....	53
Xpress 100 .....	53
D-Fi USB Compatible Fixtures .....	54
SoundSwitch .....	56
DMX-AN .....	56
DMX-RT .....	56
D-Fi Hub .....	56
IRC-6 .....	56
Obey 40 D-Fi 2.4 .....	56
Obey 70 .....	57
Obey 40 .....	57
Obey 10 .....	57
Obey 4 .....	57
Obey 6 .....	57
Obey 3 .....	57
Stage Designer 50 .....	58
DMX-4 .....	58
Data Stream 4 .....	58
Foot-C 2 .....	58
PRO-D6 .....	58
<b>NEW</b> Data Stream 8 .....	58



## ACCESSORIES

Portable Stands .....	59
Clamps .....	59
Cables .....	59
VIP Gear Bags .....	60



Straight Sections .....	62
Arc Sections .....	63
Video Mount .....	64
Corners .....	64
Base Plates .....	65
Accessories .....	65
Clamps .....	66
Stands .....	67
Quick Truss Hardware .....	68
Kits .....	68
Glo Totems .....	69
Scrims .....	70

For complete specifications,  
visit [ChauvetDJ.com](http://ChauvetDJ.com)  
All products meet CSA and CE standards.  
Specifications subject to change without notice.

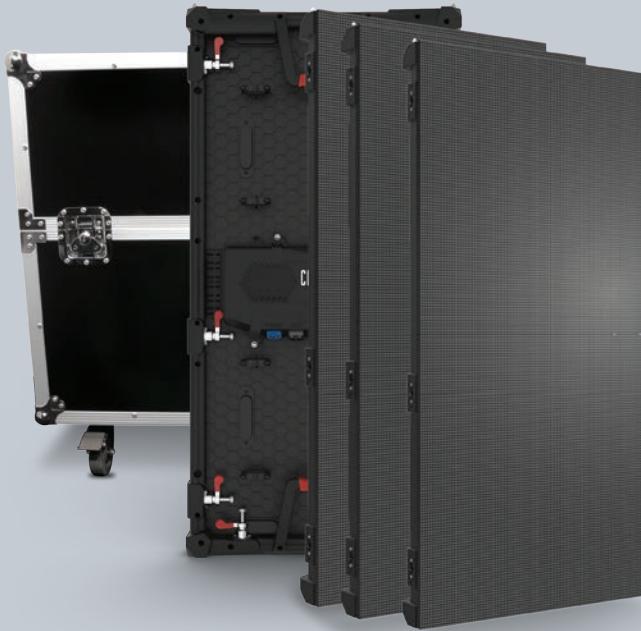


See



# **Vivid 4** **High Quality Video Panels** Lighter, Easier.

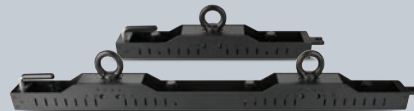




### Vivid 4

Vivid 4 is a modular video panel that vividly displays content without the need of bulky media servers. Create dazzling video displays with these lightweight video panels that feature black body LEDs that accurately reproduce high-contrast videos. Vivid 4 makes a perfect DJ façade and seamlessly integrates with Serato for displaying music videos to add gig excitement. Setup is easy and fast with multiple magnets and positioning pins that make getting up and running tool-free and effortless. Stellar reliability, quality and IP rating, are built into Vivid 4. Dual power supplies ensure downstream panels don't lose signal. Intelligent modules with dedicated memory improve the image quality and simplify maintenance. Panels can be suspended vertically or horizontally offering different aspect ratio options. Multiple Speego connectors mean Vivid 4 sets up twice as fast as other panels.

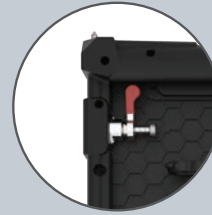
- Light Source: 21,632 SMD 2020 LEDs (tri-color RGB) 0.3 W, (60 mA), 50,000 hours
- Wavelength: 620 to 625 nm red, 516 to 530 nm green, 460 to 475 nm blue
- Viewing Angle: 120°
- Maximum Illuminance: 1,200 NITS
- Calibrated Illuminance: 1,000 NITS
- Contrast Ratio: 4,300:1
- Refresh Rate: 1,920 Hz
- Pixel Density: 43,264 m2 (104 x 208)
- Pixel Pitch: 4.8 mm
- Minimum Viewing Distance: 12 ft (4 m)
- Control Protocol: Novastar
- Power I/O Connectors: Seetronic® powerKON®
- Signal I/O Connectors: Seetronic® etherKON®
- Power Linking: 7 units @ 120 V; 13 units @ 230 V
- Input Voltage: 100 to 240 VAC, 50/60 Hz (auto-ranging)
- Power and Current: 280 W, 2.3 A @ 120 V, 60 Hz
- Power and Current: 280 W, 1.2 A @ 230 V, 50 Hz
- Weight: 27.6 lb (12.5 kg)
- Size: 19.7 x 1.9 x 39.4 in (500 x 65 x 1000 mm)
- Maximum Vertical Hang: 23 panels
- Maximum Horizontal Hang: 17 panels
- Required Controllers: Vivid Drive 23N
- Optional Mounting Brackets: RB-F50CM, RB-F100CM



Available RB-F50CM and RB-F100CM  
Mounting Rig Bars



Multiple magnets and positioning pins effortlessly allow a tool free, one-person setup



Elongated size with multiple Speego connectors sets up 2x faster than other panels



Extremely lightweight due to the magnesium die-cast housing



Included Seetronic® powerKON® and Seetronic® etherKON® Cables



### Vivid Drive 23N

Vivid Drive 23N is a video driver with numerous input/output options for any Novastar video panel. Its built-in video scaler allows for quick resizing of all video content. The Vivid Drive 23N has an on-board digital display that easily sets all settings including transitions, content, scale, aspect ratio, PiP and more. Seamlessly transition between different inputs with multiple transition effects. The HDMI loop out allows easy system expansion and connection to additional drivers or monitors. A convenient rackmount holds up to 2 drivers or can be removed for tabletop use.

- Control Protocol: Novastar
- Control Input Connectors: RS-232, USB
- Video Input Connectors: BNC, VGA, HDMI (w/ loop out)
- Video Output Connector: HDMI, DVI, RJ45 (x2)
- Max. Supported LEDs: 1,310,720
- Max. Supported Panels (Vivid 4): 30 per RJ45
- Included Rackmount: 1U
- Input Voltage: 100 to 240 VAC, 50/60 Hz (auto-ranging)
- Power and Current: 40 W, 0.4 A @ 120 V, 60 Hz
- Power and Current: 40 W, 0.2 A @ 230 V, 50 Hz
- Weight: 3.1 lb (1.4 kg)
- Size (w/o rackmount): 8.6 x 9.8 x 1.8 in (219 x 250 x 45 mm)



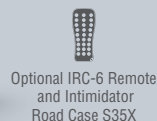
# Intimidator Series

Moving Lights. Moving People.



# move





### Intimidator Hybrid 140SR

Intimidator Hybrid 140SR is a true hybrid moving head that is an all-in-one light fixture that transforms from SPOT to BEAM to WASH effortlessly. It is fitted with an intense 140 W discharge light engine and can create dynamic beam effects with dual overlapping, independently controlled prisms. Dual gobo wheels allow for gobo morphing and amazing mid-air projections and the motorized zoom works in beam, spot and wash modes for ultimate light control. The glass optics of Intimidator Hybrid 140SR ensures crisp beams and gobos.

- DMX Channels: 13 or 19
- Light Source (included): Osram Sirius HRI 140 W discharge lamp, 6,000 hrs
- Zoom Angle Motorized (beam): 3° to 11° (spot): 7° to 21° (wash): 14° to 28°
- Gobo Wheel (1): 9 + open, rotating, indexing, interchangeable, slot-n-lock, continuous scroll at variable speeds
- Gobo Wheel (2): 17 + open, metal, continuous scroll at variable speeds
- Colors: 12 + white, split colors, continuous scroll at variable speeds
- Prism (1): 8-facet round, bidirectional rotation at variable speeds
- Prism (2): 6-facet linear, bidirectional rotation at variable speeds
- Illuminance (3° beam): 382,000 lux @ 5 m
- Illuminance (7° spot): 104,700 lux @ 5 m
- Illuminance (14° wash): 4,680 lux @ 5 m
- Input Voltage: 100 to 240 VAC, 50/60 Hz (auto-ranging)
- Weight: 33.4 lb (15.2 kg)
- Size: 12.6 x 8.6 x 20.2 in (322 x 220 x 513 mm)



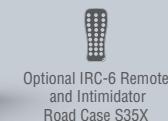
Gobo Wheel 1



Gobo Wheel 2



Colors



### Intimidator Beam 140SR

Intimidator Beam 140SR is a cutting-edge moving head beam fitted with an intense 140 W discharge light engine. Its motorized frost filter converts the tight beam to a wide wash for different applications. An impressive 16-facet prism splits the beam and intensifies the excitement. Built-in Totem mode keeps the light on and over the dance floor and non-DMX control is available with the optional IRC-6 wireless remote. On-board power linking saves time running extension cords.

- DMX Channels: 9 or 15
- Light Source (included): Osram Sirius HRI 140 W discharge lamp, 6,000 hrs
- Beam Angle (beam): 3°
- Beam Angle (frost): 21°
- Gobos: 17 + open (all Aluminum), Fixed, continuous scroll at variable speeds
- Colors: 14 + white, split colors, continuous scroll at variable speeds
- Prism: 16-facet round, bidirectional rotation at variable speeds
- Illuminance: 382,000 lux @ 5 m
- Illuminance: 37,900 lux @ 15 m
- Input Voltage: 100 to 240 VAC, 50/60 Hz (auto-ranging)
- Weight: 25.8 lb (11.7 kg)
- Size: 12.7 x 8.6 x 16.5 in (322 x 220 x 420 mm)



Gobos



Colors







Optional IRC-6 Remote



Optional IRC-6 Remote



### Intimidator Spot 455Z

Intimidator Spot 455Z is a 180 W LED moving head spot designed for large events. Featuring motorized zoom, the fixture is capable of short and long-throw applications and delivers impressive mid-air projections. Other features include dual gobo wheels for great gobo morphing and a built-in Totem mode that keeps beams focused on the dance floor. The 3-facet prism makes it possible to split the beam and cover a larger area. The motorized focus provides crisp projections at virtually any distance.

- DMX Channels: 10 or 16
- Light Source: 1 LED (white) 180 W (48.1 A), 50,000 hours
- Zoom Angle (motorized): 13° to 28°
- Gobo Wheel (1): 7 + open (6 metal + 1 glass), rotating, interchangeable, slot-n-lock, continuous scroll at variable speeds
- Gobo Wheel (2): 8 + open (8 stamped), continuous scroll at variable speeds
- Gobo Size: 25.9 mm outside, 21 mm image, 1 mm max. thickness
- Prism: 3-facet round, bidirectional rotation at variable speeds
- Colors: 7 + white, split colors, continuous scroll at variable speeds
- Illuminance (13°): 38,200 lux @ 2 m
- Illuminance (28°): 8,720 lux @ 2 m
- Input Voltage: 100 to 240 VAC, 50/60 Hz (auto-ranging)
- Weight: 42.2 lb (19.2 kg)
- Size: 16.6 x 11.9 x 20.5 in (423 x 303 x 520 mm)



Gobo Wheel 1



Gobo Wheel 2



Colors



### Intimidator Wash Zoom 450

Intimidator Wash Zoom 450 is a powerful moving head wash fitted with twelve 15 W quad-color RGBW LEDs and a motorized zoom for short or long-throw applications. Other convenient features include a Totem mode that keeps beams aimed at the dance floor and eye-catching auto programs with zone control. Wireless (non-DMX) control is possible using the optional IRC-6 remote. Up to four fixtures can be linked to create synchronized shows in automated, sound and master/slave modes. Plus, it comes with powerCON®-compatible power input/output connections. Fits best in the CHS-50 VIP Gear Bag.

- DMX Channels: 14 or 29
- Light Source: 12 LEDs (quad-color RGBW) 15 W (3.7 A), 50,000 hours
- Zoom Angle (motorized): 14° to 58°
- Illuminance (14°): 25,610 lux @ 2 m
- Illuminance (58°): 1,960 lux @ 2 m
- Input Voltage: 100 to 240 VAC, 50/60 Hz (auto-ranging)
- Power and Current: 219 W, 1.9 A @ 120 V, 60 Hz
- Power and Current: 207 W, 1 A @ 230 V, 50 Hz
- powerCON®-compatible power input/output connections for power linking
- Hanging bracket with mounting hardware
- Weight: 15.8 lb (7.2 kg)
- Size: 7.6 x 10.9 x 14.3 in (194 x 277 x 363 mm)



Available in black or white



Optional IRC-6 Remote and Intimidator Road Case S35X



### Intimidator Spot 375Z

Intimidator Spot 375Z is an exceptionally bright, 150 W LED moving head spot designed for large events. It features motorized zoom for short or long-throw applications. Dual rotating prisms split the beam for great effects and to cover a larger area. The motorized focus ensures crisp projections at almost any distance and the built-in Totem mode keeps the beams exactly where you want them. Intimidator Spot 375Z includes built-in, automated and sound-activated programs or it can be controlled in DMX or master/slave mode. powerCON®-compatible power input/output connections for power linking are also onboard.

- DMX Channels: 9 or 15
- Light Source: 1 LED (white) 150 W, (12.3 A), 50,000 hours
- Zoom Angle (motorized): 10° to 23°
- Colors: 7 + white, split colors, continuous scroll at variable speeds
- Gobos: 7 + open (6 aluminum + 1 glass), rotating, interchangeable, indexing, slot-n-lock, continuous scroll at variable speeds
- Gobo Size: 24 mm outside, 20 mm image, 1 mm max. thickness
- Prism (1): 6-facet round, bidirectional rotation at variable speeds
- Prism (2): 5-facet linear, bidirectional rotation at variable speeds
- Illuminance (10°): 38,000 lux @ 2 m / (23°): 19,850 lux @ 2 m
- Input Voltage: 100 to 240 VAC, 50/60 Hz (auto-ranging)
- Weight: 27.2 lb (12.4 kg)
- Size: 8.6 x 12.7 x 18.3 in (220 x 322 x 466 mm)



Gobos



Colors



Available in black or white



Optional IRC-6 Remote and Intimidator Road Case S35X

### Intimidator Spot 355

Intimidator Spot 355 is a feature-packed moving head spot fitted with a 90 W LED. The rotating 3-facet prism can split the beam to expand the coverage area while the manual zoom can increase the throw distance. Other features include an easy-access gobo door that makes it simple to change gobos for customized looks and a Totem mode that keeps beams focused on the dance floor. Up to 4 fixtures can be linked to create eye-catching, synchronized shows in automated or sound mode. Set, save, and recall one scene directly from the full-color LCD display. Travels safely in the optional Road Case S35X or CHS-50 VIP Gear Bag.

- DMX Channels: 8 or 14
- Light Source: 1 LED (white) 90 W (24.2 A), 50,000 hours
- Zoom Angle (manual): 12° to 17°
- Colors: 8 + white, split colors, continuous scroll at variable speeds
- Gobos: 7 + open (5 metal + 2 glass), rotating, interchangeable, indexing, continuous scroll at variable speeds
- Gobo Size: 24 mm outside, 20 mm image, 1.1 mm max. thickness
- Prism: 3-facet round, static, bidirectional rotation at variable speeds
- Illuminance (12°): 21,810 lux @ 2 m
- Illuminance (17°): 9,400 lux @ 2 m
- Input Voltage: 100 to 240 VAC, 50/60 Hz (auto-ranging)
- Weight: 24.6 lb (11.2 kg)
- Size: 10.6 x 13.4 x 15.4 in (268 x 340 x 392 mm)



Gobos



Colors





NEW



### Intimidator Beam 355

Intimidator Beam 355 is a powerful and feature-packed moving head beam fitted with a 100 W LED. Easily generate complex looks using the fixed gobo wheel that includes a unique animation effect to create additional dramatic looks. A rotating 3-facet prism splits the beam to cover larger areas. The motorized frost filter converts the beam to a wash. The onboard full-color display is IRC-6 compatible and features Totem mode and onboard memory for storing a scene. Intimidator Beam 355 has powerCON®-compatible power input/output connections for power linking.

- DMX Channels: 8 or 14
- Light Source: 1 LED (white) 100 W, (27 A), 50,000 hours
- Beam Angle: 3°
- Gobos: 5 + open, animation effect, continuous scroll at variable speeds
- Colors: 8 + white, split colors, continuous scroll at variable speeds
- Illuminance: 262,800 lux @ 2 m
- Input Voltage: 100 to 240 VAC, 50/60 Hz (auto-ranging)
- Weight: 25.4 lb (11.6 kg)
- Size: 12.7 x 8.7 x 18.9 in (322 x 220 x 480 mm)



Gobos



Colors



### Intimidator Trio

Intimidator Trio is an innovative, LED-powered moving head that works brilliantly as a beam, wash and effect fixture. The fixture's motorized zoom allows seamless changes, from a narrow beam to a wide wash. Its continuously rotating honeycomb delivers the excitement of an effect light. Built-in auto programs with zone control make it easy to create complex looks. For even more elaborate looks, master/slave programs can be coordinated for up to 4 fixtures with no programming. A built-in Totem mode allows the beams to remain focused on the dance floor.

- DMX Channels: 15 or 30
- Light Source: 6 LEDs (quad-color RGBW) 21 W (6.3 A), 50,000 hours
- Zoom Angle (motorized): 7° to 53°
- Illuminance (7°): 16,000 lux @ 2m
- Illuminance (53°): 1,350 lux @ 2 m
- Input Voltage: 100 to 240 VAC, 50/60 Hz (auto-ranging)
- Weight: 20 lb (9.2 kg)
- Size: 10.9 x 10.9 x 15.2 in (278 x 278 x 386 mm)



Available in black or white



### Intimidator Spot 255

Intimidator Spot 255 is a feature-rich moving head spot fitted with a 60 W LED. This power-packed fixture enhances any event by generating a synchronized light show in master/slave mode with built-in automated programs. Other features include built-in effect macros and move-in-black capabilities, selectable pan and tilt ranges, electronic dimmer, a 3-facet prism, an easy-access gobo door for quick gobo changes, and sound-activated programs. Control it wirelessly with the optional IRC-6 remote. Intimidator Spot 255 fits best in the CHS-X5X VIP Gear Bag.

- DMX Channels: 8 or 13
- Light Source: 1 LED (white) 60 W (2.3 A), 50,000 hours
- Beam Angle: 15°
- Gobos: 7 + open, rotating, interchangeable, slot-n-lock, continuous scroll at variable speeds
- Gobo Size: 24 mm outside, 20 mm image, 1.1 mm max. thickness
- Colors: 8 + white, split colors, continuous scroll at variable speeds
- Prism: 3-facet round, static
- Illuminance: 10,420 lux @ 2 m
- Input Voltage: 100 to 240 VAC, 50/60 Hz (auto-ranging)
- Weight: 12.6 lb (5.7 kg)
- Size: 8.3 x 9.1 x 13.2 in (211 x 232 x 337 mm)



Gobos



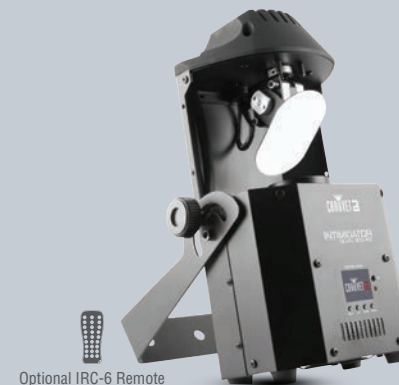
Colors



MOVING HEADS & SCANNERS



Multiple Mounting Options | Optional CHS-DUO VIP Gear Bag



### Intimidator Spot Duo 155

Intimidator Spot Duo 155 is a dual moving head fixture featuring two bright, compact and lightweight moving heads pre-mounted on a single bar. A built-in pass-through hole makes it easy to safely mount this versatile fixture on a tripod. Separate color and gobo wheels, smooth dimming and adjustable strobe speed increase design options. Generate a synchronized show with two fixtures in master/slave mode. Minimize programming time with separate built-in movement macros for sound and automated modes. Multiple units can be power linked to save time running cables and extension cords. Fits best in the CHS-DUO VIP Gear Bag.

- DMX Channels: 10, 17 or 20
- Light Source: 2 LEDs (white) 32 W (2.3 A), 50,000 hours
- Beam Angle: 15°
- Gobos: 9 + open (9 metal), continuous scroll at variable speeds
- Colors: 9 + white, split colors, continuous scroll at variable speeds
- Illuminance: 5,550 lux @ 2 m
- Input Voltage: 100 to 240 VAC, 50/60 Hz (auto-ranging)
- Weight: 19.8 lb (9 kg)
- Size: 21.5 x 6.5 x 11.4 in (546 x 165 x 290 mm)



Gobos



Colors



### Intimidator Spot 155

Intimidator Spot 155 is a bright, compact, and lightweight LED moving head, perfect for mobile applications. Rely on it to energize any dance floor with fast and precise movements, crisp optics and even output. Built-in performance features like separate color and gobo wheels, ultra-smooth dimming and adjustable strobe speed enhance any light show. Minimize programming time with built-in movement macros, move-in-black features and sound-activated automated programs that can generate a synchronized show in master/slave mode. This user-friendly fixture also offers individual reset of pan/tilt, color, and gobo. Multiple units can be power linked to save time running cables and extension cords. Fits best in the CHS-X5X VIP Gear Bag.

- DMX Channels: 6 or 11
- Light Source: 1 LED (white) 32 W (2.3 A), 50,000 hours
- Beam Angle: 17°
- Gobos: 9 + open (9 aluminum), continuous scroll at variable speeds
- Colors: 9 + white, continuous scroll at variable speeds
- Illuminance: 4,860 lux @ 2 m
- Input Voltage: 100 to 240 VAC, 50/60 Hz (auto-ranging)
- Weight: 9.8 lb (4.4 kg)
- Size: 8.1 x 8.3 x 11.5 in (205 x 211 x 291 mm)



Gobos



Colors



### Intimidator Wave 360

Intimidator Wave 360 brings a "wave" of excitement to your next event. This dynamic effect features four independently controlled 12 W quad-color LED moving heads on a single rotating base. With its razor sharp beams, continuous pan rotation and adjustable tilt ranges, Intimidator Wave 360 produces the kind of astounding lightshows that set you apart. Up to four units (16 moving heads in total!) can be linked in automatic, sound or master-slave mode. An optional IRC-6 remote can be used for (non-DMX) control.

- DMX Channels: 17 or 33
- Pan and Tilt: 360° (continuous) /270°
- Light Source: 4 LEDs (quad-color RGBW) 12 W (3.9 A) 50,000 hours
- Beam Angle: 5°
- Illuminance: 16,670 lux @ 2 m
- Input Voltage: 100 to 240 VAC, 50/60 Hz (auto-ranging)
- Weight: 19.4 lb (8.8 kg)
- Size: 22 x 7.4 x 11.7 in (559 x 189 x 297 mm)



### Intimidator Scan 305

Intimidator Scan 305 features a bright 60 W LED and a crisp 3-facet prism that allows you to split the beam and cover larger areas. Link up to four fixtures to create synchronized shows in automated, sound or master/slave mode. Save time running cables and extension cords. Minimize programming time using built-in movement macros and move-in-black features. For easy (non-DMX) operation, control it with the optional IRC-6 remote. Fits best in the CHS-40 VIP Gear Bag.

- DMX Channels: 7 or 11
- Light Source: 1 LED (white) 60 W (2.3 A), 50,000 hours
- Beam Angle: 15°
- Gobos: 7 + open (5 metal + 2 glass), rotating, interchangeable, slot-n-lock, continuous scroll at variable speeds
- Gobo Size: 23.9 mm outside, 20.5 mm image, 1 mm max. thickness
- Colors: 8 + white, split colors, continuous scroll at variable speeds
- Prism: 3-facet round, static
- Illuminance: 9,110 lux @ 2 m
- Input Voltage: 100 to 240 VAC, 50/60 Hz (auto-ranging)
- Weight: 10 lb (4.6 kg)
- Size: 16.9 x 10 x 5.7 in (430 x 255 x 147 mm)



Gobos



Colors









# Freedom Everywhere

100% battery operated and DMX wireless fixtures



Removable Battery

**NEW**

## The NEW Freedom Flex H4 IP

Carry and charge up to 6 Freedom Flex H4 IP in a convenient road case.



- Swappable batteries!
- No battery replacement maintenance!
- No need to take lights out of rotation for charging!



NEW



### Freedom Flex H4 IP

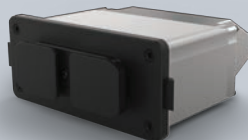
Freedom Flex H4 IP features a quick-change battery pack for easy battery charges and changes making this 100% wireless, battery-operated par with a built-in D-Fi transceiver even more flexible and powerful. Freedom Flex H4 IP has hex-color (RGBAW + UV) LED technology for unlimited color mixing capabilities. The fixture is temporary outdoor-rated and has a robust housing that repels water, snow, dirt, and sand for all-weather applications. Freedom Flex H4 IP has multiple wireless triggering and control options via the FlareCON Air and the FlareCON app and it works in master/slave mode with any Freedom Par. **System includes 6 Freedom Flex H4, Charging Road Case and 6 Freedom Flex batteries.**

- DMX Channels: 6, 8 or 12
- Light Source: 4 LEDs (hex-color RGBAW + UV) 10 W, (2 A), 50,000 hours
- Beam Angle: 14°
- Field Angle: 45°
- Illuminance: 2,163 lux @ 2 m
- Maximum Run Time (all on): up to 8 hours
- Maximum Run Time (single color): up to 20 hours
- Weight: 8.8 lb (1.4 kg)
- Size: 5.7 x 5.4 x 8 in (145 x 138 x 204 mm)



### Freedom Flex Battery

- Battery Type: Li-ion
- Battery Capacity: 11 Ah
- Battery Voltage: 11.1 VDC
- Quantity of Cells: 15
- Rechargeable: Yes
- Watt Hours: 122.1 Wh
- Lithium Content: 131.6 g
- Weight: 2.2 lb (1 kg)
- Size: 5.0x 2.0x 5.22 in (127.83 x 53.16 x 132.62 mm)



NEW

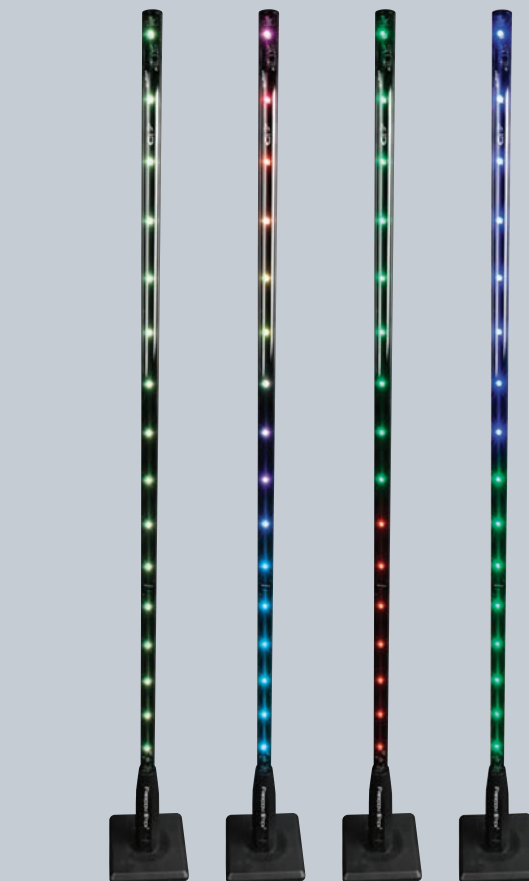


### Freedom H1

Freedom H1 is a compact 100% TRUE wireless, battery-operated, LED wash light with a built-in D-Fi transceiver. The fixture features a single hex-color (RGBAW+UV) 10 W LED. Its magnetic base makes it easy to mount the light to most metal surfaces providing added versatility. Because of its small size, Freedom H1 features effortless transport and set-up. Freedom H1 has a digital display for easy control and adjustment of all settings. Multiple control options include stand-alone mode, wireless DMX or IR. The Freedom H1 X4 system includes 4 fixtures, 4 diffusers, a carry bag, multi-charger and IRC-6 remote. **System includes 4 Freedom H1 and Charging Bag.**



- DMX Channels: 6, 8 or 12
- Light Source: 1 LED (hex-color RGBAW+UV) 10 W, (3 A), 50,000 hours life
- Beam Angle: 21°
- Illuminance (w/ filter): 268 lux @ 2 m
- Illuminance (w/o filter): 314 lux @ 2 m
- Maximum Run Time (all on): up to 8 hours
- Maximum Run Time (single color): up to 20 hours
- Input Voltage: 8.4VDC, 1.35A (external power supply: 100-240 VAC, 50/60 Hz)
- Weight: 1.4 lb (0.7 kg)
- Size: 3.8 x 3 x 5.5 in (97 x 75 x 139 mm)



### Freedom Stick

- DMX Channels: 3, 8, 48 or 50
- Light Source: 32 SMD LEDs (tri-color RGB) 0.2 W (50mA), 50,000 hours
- Coverage Angle: 360°
- Maximum Run Time (all on): up to 8 hours
- Weight: 3.5 lb (1.6 kg)
- Size: 6.3 x 6.3 x 61 in (161 x 161 x 1550 mm) with base



### Freedom Stick Pack

Includes: 4 Freedom Sticks, 1 Multi-Charger, 1 IRC-6 Remote and 1 Carrying Bag



BATTERY & WIRELESS





IRC-6 Remote Included



Available in black or white

IRC-6 Remote Included



IRC-6 Remote Included



IRC-6 Remote Included



Available in black or white

### Freedom Par Tri-6

Freedom Par Tri-6 is powerful, bright, and truly 100% wireless with a rechargeable battery and a built-in D-Fi transceiver. Freedom Par Tri-6 has 18 W of RGB color mixing and can be operated with the control panel, the included CHAUVET DJ IRC-6 remote, or from any mobile phone or tablet running the FlareCON mobile app. Freedom Par Tri-6 fits perfectly inside TRUSST and all other 12" box truss, and travels safely and stylishly in the CHAUVET DJ CHS-FR4 VIP Gear Bag or using the Freedom Charge 9 road case.

- DMX Channels: 3, 4, 5 or 9
- Light Source: 6 LEDs (tri-color RGB) 3 W (600 mA), 50,000 hours
- Beam Angle: 15°
- Illuminance: 1,938 lux @ 2 m
- Maximum Run Time (all on): 8 hours
- Maximum Run Time (single color): 20 hours
- Input Voltage: 100 to 240 VAC, 50/60 Hz (auto-ranging)
- Weight: 5.8 lb (2.6 kg)
- Size: 5.4 x 5.7 x 7.2 in (138 x 145 x 184 mm)



### Freedom Par Quad-4 IP

Freedom Par Quad-4 IP is a 100% TRUE wireless, battery-operated, quad-color (RGBA) LED Par with built-in D-Fi transceiver. Its temporary outdoor-rated robust housing repels water, snow, dirt, and sand for all-weather applications and is available in black or white. Freedom Par Quad-4 IP works in Master/Slave mode with first-generation Freedom Pars and it has multiple wireless triggering and control options via the FlareCON Air and the FlareCON app. Convenient, wireless non-DMX control is available using the IRC-6 Remote and customized colors can be created using the built-in LED display. Shine light where it is needed using the built-in adjustable kickstand and prevent light spillage with the built-in glare shield. Achieve smooth LED fading with built-in dimming curves and extend the battery's lifespan with built-in discharge protection. Safely store and transport your fixtures from gig to gig in the CHS-FR4 carry bag.

- DMX Channels: 4, 6 or 10
- Light Source: 4 LEDs (quad-color RGBA) 5 W, (2 A), 50,000 hours
- Beam Angle: 15°
- Illuminance: 2,464 lux @ 2 m
- IP Rating: IP54
- Maximum Run Time (all on): 8 hours
- Maximum Run Time (single color): 20 hours
- Input Voltage: 100 to 240 VAC, 50/60 Hz (auto-ranging)
- Weight: 8 lb (3.6 kg)
- Size: 5.7 x 5.4 x 7.5 in (145 x 138 x 191 mm)



### Freedom Par Quad-4

Freedom Par Quad-4 is powerful, bright and, truly 100% wireless with a rechargeable battery and a built-in D-Fi transceiver. Freedom Par Quad-4 has 20 W of RGBA color mixing for that extra richness and variety that amber adds to colors. It can be operated with the control panel, the included IRC-6 remote, or from any mobile phone or tablet running the FlareCON mobile app. Freedom Par Quad-4 fits perfectly inside TRUSST and all other 12" box truss, and travels safely and stylishly in the CHAUVET DJ CHS-FR4 VIP Gear Bag or using the Freedom Charge 9 road case.

- DMX Channels: 4, 6 or 10
- Light Source: 4 LEDs (quad-color RGBA) 5 W (2 A), 50,000 hours
- Beam Angle: 15°
- Illuminance: 2,300 lux @ 2 m
- Maximum Run Time (all on): 8 hours
- Maximum Run Time (single color): 20 hours
- Input Voltage: 100 to 240 VAC, 50/60 Hz (auto-ranging)
- Weight: 6.2 lb (2.8 kg)
- Size: 5.4 x 5.7 x 7.2 in (138 x 145 x 184 mm)



### Freedom Par Hex-4

The Freedom Par Hex-4 is the most colorful model in the next generation of the Freedom Par family. It has four 10-watt RGBAW+UV LEDs for that extra punch and the special effects that white and UV add to color mixing. The Freedom Par Hex-4 has a special limiter option for extending battery life so that when you use more than 4 colors you know you'll get a good long show! The Freedom Par Hex-4 comes in black or white housing so it fits into any décor and travels safely while charging using the Freedom Charge 9 road case.

- DMX Channels: 6, 8 or 12
- Light Source: 4 LEDs (hex-color RGBAW+UV) 10 W (2 A), 50,000 hours
- Beam Angle: 23°
- Illuminance: 1,372 lux @ 2 m
- Maximum Run Time (all on): 8 hours
- Maximum Run Time (single color): 20 hours
- Input Voltage: 100 to 240 VAC, 50/60 Hz (auto-ranging)
- Weight: 6.2 lb (2.9 kg)
- Size: 5.4 x 5.7 x 7.2 in (138 x 145 x 184 mm)







Charge multiple units with the  
Freedom Charge 9  
Compatible fixtures: Freedom Par Tri-6,  
Freedom Par Quad-4, Freedom Par Hex-4,  
Freedom Par Quad-4 IP



Anti-glare shield



Built-in adjustable kickstand



Built-in threaded hole  
for easy mounting



CHS-FR4 VIP Gear Bag  
(sold separately)



# Rain or Shine

Inside and Out



**NEW**

## The NEW Freedom Flex H4 IP

The Freedom Flex H4 IP is a temporary outdoor-rated fixture with a robust housing that repels water, snow, dirt, and sand for all-weather applications.

For full specs (See page 13)







### COLORband PiX IP

COLORband PiX IP is a must-have fixture for mobile DJs or club installers looking to create high-impact visuals by combining flicker free pixel-mapping effects and wash lighting at both indoor and outdoor events. The robust IP65-rated housing withstands water, snow and dirt.

- DMX Channels: 3, 4, 6, 7, 9, 12, 18 or 36
- Light Source: 12 LEDs (tri-color RGB) 3 W (1,050 mA), 50,000 hours
- Beam Angle: 20°
- Illuminance: 2,325 lux @ 2 m
- IP Rating: IP65
- Input Voltage: 100 to 240 VAC, 50/60 Hz (auto-ranging)
- Weight: 13.5 lb (6.1 kg)
- Size: 39 x 3.9 x 6.8 in (993 x 100 x 173 mm)



### SlimPANEL Tri 24 IP

SlimPANEL Tri 24 IP provides bright and saturated color washes at mobile functions and on stage, indoors or outdoors. This IP65-rated fixture is at home in just about any environment and can withstand the strongest rainstorms without having to be covered or brought inside. Powered by 24 tri-color LEDs, it projects a smooth, even wash onto nearly any surface.

- DMX Channels: 3, 5 or 9
- Light Source: 24 LEDs (tri-color RGB) 3 W (1,050 mA), 50,000 hours
- Beam Angle: 20°
- Illuminance: 5,850 lux @ 2 m
- IP Rating: IP65
- Input Voltage: 100 to 240 VAC, 50/60 Hz (auto-ranging)
- Weight: 13.8 lb (6.2 kg)
- Size: 10.5 x 11.9 x 5.3 in (268 x 301 x 134 mm)



Available in black or white

IRC-6 Remote Included

### Freedom Par Quad-4 IP

Freedom Par Quad-4 IP is a 100% wireless, battery operated, quad-color (RGBA) LED wash light with a built-in D-Fi transceiver and a robust housing that repels water, snow, dirt, and sand during outdoor events. Multiple wireless control options are available via the FlareCON Air and the FlareCON app or with the point-and-shoot IRC-6 remote. Freedom Par Quad-4 IP also works in master/slave mode with first-generation Freedom fixtures.

- DMX Channels: 4, 6, or 10
- Light Source: 4 LEDs (quad-color RGBA) 5 W, (2 A), 50,000 hours
- Beam Angle: 15°
- Illuminance: 2,464 lux @ 2 m
- IP Rating: IP54
- Maximum Run Time (all on): 8 hours
- Maximum Run Time (single color): 20 hours
- Input Voltage: 100 to 240 VAC, 50/60 Hz (auto-ranging)
- Weight: 8 lb (3.6 kg)
- Size: 5.7 x 5.4 x 7.5 in (145 x 138 x 191 mm)



Optional IRC-6 Remote



### SlimPAR 56 IP

SlimPAR 56 IP is an excellent RGB LED wash light for outdoor events. No need to worry if your unit gets wet during an outdoor event or has a drink spilled on it. Its IP65 rating ensures strong resistance to harsh environmental conditions. Create customized light shows in 3 or 7 channels of DMX mode. Or, for added convenience, wireless remote control is available using the optional IRC-6 remote.

- DMX Channels: 3 or 7
- Light Source: 108 LEDs (36 red, 36 green, 36 blue) 0.25W (20mA), 100,000 hours
- Beam Angle: 14°
- Illuminance: 876 lux @ 2 m
- IP Rating: IP65
- Input Voltage: 100 to 240VAC 50/60Hz (auto-ranging)
- Weight: 4.1 lbs (1.9 kg)
- Size: 9.3 x 8 x 3.2 in (236 x 203 x 82 mm)



### Festoon | Festoon VW

Dynamic outdoor-rated party décor lights featuring the vintage look and feel of standard party light strings. For full specs, (see page 38)

## Outdoor Cables



### CDIPPOWER5

16.4 ft (5 m)

Compatible with:

COLORrail IP, SlimPAR 56 IP



### IP5POWER

16.4 ft (5 m)

Compatible with:

SlimPANEL Tri 24 IP, COLORband PiX IP



### CDIPSIG5

16.4 ft (5 m)

Compatible with:

SlimPANEL Tri 24 IP, SlimPAR 56 IP  
COLORrail IP, COLORband PiX IP



# All about EVE

A new day of production lighting power







Available in black or white

### EVE TF-20

EVE TF-20 is a compact, energy efficient, soft edge LED accent luminaire that can function as a regular PAR can, while its classic Fresnel style emulates stage and theatrical lighting. Conveniently included barn doors block light from unwanted areas, letting you focus on a particular space or object. Thanks to its CCR (Constant Current Reduction) LED dimming, it works seamlessly with conventional dimmers, and is flicker-free in filmed productions. MET certified, it is equally suited for new and retrofit installations via the included track adaptor as it is for mobile use right out of the box using its standard power cord.

- Light Source: 1 COB LED (warm white) 20 W, (0.5 A), 50,000 hours
- Color Temperature: 2,700 K
- Beam Angle: 24°
- Illuminance: 1,506 lux @ 2 m
- Input Voltage: 85 to 120 VAC, 50/60 Hz (auto-ranging)
- Weight: 2.6 lb (1.2 kg)
- Size: 6 x 5.5 x 7.25 in (153.5 x 140 x 184 mm)



Optional D-Fi USB Transceiver

### EVE F-50Z

EVE F-50Z is a powerful warm white 50 W Fresnel fixture, perfect for theatrical, worship and broadcast installations. It features D-Fi USB compatibility for wireless master/slave or DMX control. Included barn doors and gel frame let you shape and color the beam for the perfect spot. EVE F-50Z has a locking power connector and its smooth dimming capabilities make it great for video applications. EVE F-50Z is easily controllable via DMX.

- DMX Channels: 1 or 3
- Light Source: 1 LED (warm white) 50 W, (1.3 A), 50,000 hours
- Color Temperature: 3,500 K
- Zoom Angle (manual): 17° to 50°
- Illuminance (17°): 4,780 lux @ 2 m
- Illuminance (50°): 998 lux @ 2 m
- Input Voltage: 100 to 240 VAC, 50/60 Hz (auto-ranging)
- Weight: 8.4 lb (3.9 kg)
- Size: 11.1 x 8.3 x 13 in (281 x 212 x 328 mm)



Optional D-Fi USB Transceiver

### EVE E-100Z

EVE E-100Z is a powerful spot fixture featuring sharp pattern projection with a 100 W warm white LED light source. Features D-Fi USB compatibility for wireless master/slave or DMX control. This versatile fixture works with metal or glass gobos to create incredible gobo or pattern details. The manual zoom and framing shutters make it simple to control beams.



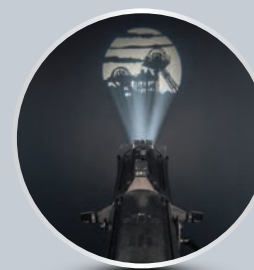
- DMX Channels: 1 or 3
- Light Source: 1 LED (warm white) 100 W (2.3 A), 50,000 hours
- Color Temperature: 3,500 K
- Gobo Size: M (66 mm outside, 48 mm image, 2 mm max. thickness)
- Zoom Angle (manual): 14° to 30°
- Illuminance (14°): 15,100 lux @ 2 m
- Illuminance (30°): 3,800 lux @ 2 m
- Input Voltage: 100 to 240 VAC, 50/60 Hz (auto-ranging)
- Weight: 12.6 lb (5.7 kg)
- Size: 24 x 7.2 x 16.9 in (611 x 183 x 430 mm)



Optional D-Fi USB Transceiver

### EVE E-50Z

EVE E-50Z is an LED ellipsoidal that shines a hard-edged, warm white spot and features D-Fi™ USB compatibility for wireless master/slave or DMX control. Manual zoom gives you the flexibility to project from any distance and its framing shutters let you easily alter and control the projected beam. EVE E-50Z includes holders for glass and steel gobos as well as a gel frame. You can operate EVE E-50Z in standalone mode eliminating the need for DMX control and you can save time running extension cords by power linking multiple units.



- DMX Channels: 1 or 3
- Light Source: 1 LED (warm white) 50 W, (1.3 A), 50,000 hours
- Color Temperature: 3,500 K
- Gobo Size: D (53.3 mm outside, 43 mm image, 2 mm max. thickness)
- Zoom Angle (manual): 20° to 39°
- Illuminance (20°): 7,910 lux narrow @ 2 m
- Illuminance (39°): 2,710 lux wide @ 2 m
- Input Voltage: 100 to 240 VAC, 50/60 Hz (auto-ranging)
- Weight: 9.2 lb (4.2 kg)
- Size: 18.9 x 6.2 x 15 in (480 x 157 x 381 mm)





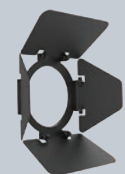
NEW

**EVE P-150 UV**

EVE P-150 UV is a brawny blacklight cannon fitted with 40 UV LEDs emitting 150 W of blacklight power. The unit is designed without a fan and its silent operation combined with its flicker-free output make it ideal for video use. EVE P-150 UV is D-Fi USB compatible giving users the option to control the light wirelessly in master/slave mode or wireless DMX control. 25° and 45° magnetic lenses to adjust the beam are included along with a gel frame holder and accessory slot for optional barn doors.



- DMX Channels: 1 or 5
- Light Source: 40 LEDs (UV) 150 W total, (2 A), 50,000 hours
- Coverage Angle: (narrow lens): 25°(no lens): 35°(wide lens): 45°
- Input Voltage: 100 to 240 VAC, 50/60 Hz (auto-ranging)
- Weight: 7.6 lbs (3.5 kg)
- Size: 8.6 x 9.65 x 12 in (220 x 245 x 305 mm)

Optional Barn Door  
(Sold Separately)

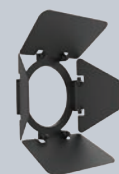
NEW

**EVE P-140 VW**

EVE P-140 VW is a variable white wash light featuring cool white, warm white and amber LEDs. EVE P-140 VW is a D-Fi USB compatible fixture providing the option to control the fixture wirelessly in master/slave mode or with DMX control. This sturdy wash light has a built-in gel frame holder and a 6 1/4-inch accessory slot to hold optional barn doors. EVE P-140 VW comes with 25° and 45° interchangeable lenses that attach magnetically to alter the beam for added lighting flexibility.



- DMX Channels: 3 or 9
- Light Source: 40 LEDs (13 cool white, 13 warm white, 14 amber) 140 W total, (2.4 A), 50,000 hours
- Beam Angles: 25°, 35° or 45°
- Field Angles: 45°, 55° or 65°
- Input Voltage: 100 to 240 VAC, 50/60 Hz (auto-ranging)
- Weight: 7.6 lbs (3.5 kg)
- Size: 8.6 x 9.65 x 12 in (220 x 245 x 305 mm)

Optional Barn Door  
(Sold Separately)

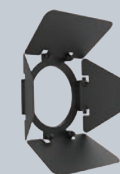
NEW

**EVE P-130 RGB**

EVE P-130 RGB is a robust RGB wash light designed for mobile lighting professionals. Interchangeable magnetic lenses are included to alter the beam to desired angles. EVE P-130 RGB has a sturdy cast aluminum housing that provides extra strength without added weight. D-Fi USB compatibility is also onboard providing the option for wireless master/slave or DMX control. Its fanless design ensures 100% silent operation and the unit's high-frequency LED dimming offers flicker-free operation perfect for video use.



- DMX Channels: 3 or 9
- Light Source: 40 LEDs (13 red, 13 green, 14 blue) 130 W total, (2.5 A), 50,000 hours
- Beam Angles: 25°, 35° or 45°
- Field Angles: 45°, 55° or 65°
- Input Voltage: 100 to 240 VAC, 50/60 Hz (auto-ranging)
- Weight: 7.6 lbs (3.5 kg)
- Size: 8.6 x 9.65 x 12 in (220 x 245 x 305 mm)

Optional Barn Door  
(Sold Separately)





WASH LIGHTS



# SlimPAR Pro

Powerful Event Lighting.

Wash Pro



Available in black or white



Compatible with IRC-6 Remote and D-Fi USB Transceiver



Compatible with IRC-6 Remote and D-Fi USB Transceiver

Available in black or white



Compatible with IRC-6 Remote and D-Fi USB Transceiver

NEW



WASH LIGHTS

### SlimPAR Pro W USB

SlimPAR Pro W USB is a low-profile, variable white LED wash light featuring cool white, warm white, and amber LEDs. The fixture's adjustable color temperatures can match existing lighting in addition to providing the perfect temperature for video. Its flicker-free operation also makes it well-suited for on-camera use. D-Fi USB compatibility provides wireless master/slave or DMX control.

- DMX Channels: 3, 4 or 19
- Light Source: 12 LEDs (tri-color CW, WW, A) 6 W (1.4 A), 50,000 hours
- Color Temperature Range: 1,700 to 6,300 K
- Beam Angle: 17°
- Illuminance: 3,097 lux @ 2 m
- Input Voltage: 100 to 240 VAC, 50/60 Hz (auto-ranging)
- Weight: 7 lb (3.2 kg)
- Size: 10 x 3.9 x 11.4 in (253 x 98 x 290 mm)



### SlimPAR Pro Q USB

SlimPAR Pro Q USB is a high-powered quad-color (RGBA), low-profile wash light with D-Fi USB compatibility for wireless control. Dynamic and natural-looking amber LEDs provide expanded color mixing capabilities. Added light spill control is possible because the fixture is compatible with most 7.5" barn doors.

- DMX Channels: 4, 5 or 10
- Light Source: 12 LEDs (quad-color RGBA) 6 W (2 A), 50,000 hours
- Beam Angle: 16°
- Illuminance: 5,690 lux @ 2 m
- Input Voltage: 100 to 240 VAC, 50/60 Hz (auto-ranging)
- Weight: 7.2 lb (3.3 kg)
- Size: 10 x 3.9 x 11.4 in (253 x 98 x 290 mm)



### SlimPAR Pro H USB

SlimPAR Pro H USB is designed for any application that calls for a high-power, low-profile LED wash light with precise colors. Features include D-Fi USB compatibility for wireless control. SlimPAR Pro H USB has no moving parts and is flicker-free so it is ideal for quiet and on-camera applications. Generate a broad spectrum of colors and achieve natural-looking color temperatures with 6-in-1 LED technology.

- DMX Channels: 6, 7 or 12
- Light Source: 12 LEDs (hex-color RGBAW+UV) 10 W (2.4 A), 50,000 hours
- Beam Angle: 24°
- Illuminance: 3,218 lux @ 2 m
- Input Voltage: 100 to 240 VAC, 50/60 Hz (auto-ranging)
- Weight: 7.2 lb (3.3 kg)
- Size: 10 x 3.9 x 11.4 in (253 x 98 x 290 mm)



### SlimPAR Pro QZ12 USB

SlimPAR Pro QZ12 USB is a D-Fi USB compatible wash light with motorized zoom and quad-color (RGBA) LEDs designed for mobile lighting professionals. A built-in gel frame holder and 7½-inch accessory slot to hold optional barn doors are onboard. Flexible control options are possible with 3- and 5-pin DMX connectors and PowerCON®-compatible power input/output connections provide sturdy and secure power linking. SlimPAR Pro QZ12 USB has built-in dimming curves to simulate halogen filaments. High-frequency LED dimming give flicker-free output ideal for video work and fanless design means 100% silent operation.



- DMX Channels: 5, 6 or 11
- Light Source: 12 LEDs (quad-color RGBA) 10 W (2.7 A), 50,000 hours life
- Zoom Angle (beam to field): 10° to 50°
- Illuminance (10°): 16,070 lux @ 2 m
- Illuminance (50°): 1,216 lux @ 2 m
- Input Voltage: 100 to 240 VAC, 50/60 Hz (auto-ranging)
- Weight: 10.2 lbs (4.6 kg)
- Size: 9.2 x 10.6 x 12.5 in (234 x 269 x 318 mm)



POWER



NEW



# BT Air™

Light Easier

**BT Air**

Control right from your phone or tablet straight to your lights!  
No additional hardware needed!



Download on the  
App Store

GET IT ON  
Google Play



# Bluetooth®

## Wireless Control



NEW



### SlimPAR Q12 BT

SlimPAR Q12 BT is a compact wash light with built-in Bluetooth® technology that allows you to control the light from any smart phone or tablet without the need for any additional hardware. SlimPAR Q12 BT features 12 quad-color (RGBA) LEDs that generate a broad spectrum of colors and achieve natural-looking color temperatures. Easily set static colors or automated programs with the optional IRC-6 remote or create eye-catching effects with sound-activated and automated programs. Download the BTair app for free from your favorite online app store.



- DMX Channels: 4 or 12
- Light Source: 12 LEDs (quad-color RGBA) 3.5 W, (1.5 A), 50,000 hours
- Beam Angle: 18°
- Illuminance: 2,893 lux @ 2 m
- Input Voltage: 100 to 240 VAC, 50/60 Hz (auto-ranging)
- Max Unobstructed Distance: 150 ft (45.7 m)
- Weight: 3.2 lb (1.5 kg)
- Size: 10.9 x 10.8 x 2.9 in (279 x 275 x 74 mm)



NEW



### SlimPAR T12 BT

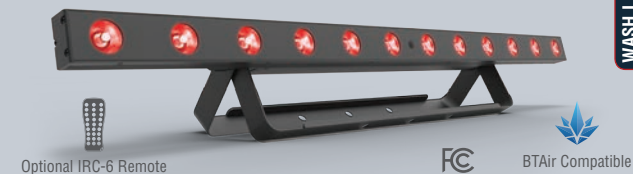
SlimPAR T12 BT makes remote light control easy with its on-board Bluetooth® technology. Download the BTair app for free from your favorite app store and enjoy the ultra-convenient ease of controlling SlimPAR T12 BT right from your smart phone or tablet. SlimPAR T12 BT has 12 tri-color (RGB) LEDs and its compact design easily fits inside sticks of truss making it perfect for truss warming. An optional IRC-6 Remote can also be used for control as well as DMX, automated and sound-activated programs.



- DMX Channels: 3 or 7
- Light Source: 12 LEDs (tri-color RGB) 2.5 W, (1 A), 50,000 hours
- Beam Angle: 14°
- Illuminance: 5,340 lux @ 2 m
- Input Voltage: 100 to 240 VAC, 50/60 Hz (auto-ranging)
- Max Unobstructed Distance: 150 ft (45.7 m)
- Weight: 2.6 lb (1.2 kg)
- Size: 10.3 x 8.4 x 3 in (264 x 214 x 76.9 mm)



NEW



### COLORband T3 BT

COLORband T3 BT is a compact linear wash light with built-in Bluetooth® technology. With the BTair app, COLORband T3 BT can be controlled remotely from any smart phone or tablet without any additional hardware. Download BTair for free from your favorite online app store. COLORband T3 BT has 12 tri-colored (RGB) LEDs and 3 zones of control to create amazing automated effects. Access built-in automated programs via optional IRC-6 Remote, master/slave or DMX.



- DMX Channels: 2, 5 or 17
- Light Source: 12 LEDs (tri-color RGB), 2.5 W (1 A) 50,000 hours
- Beam Angle: 42°
- Illuminance: 548 lux @ 2 m
- Input Voltage: 100 to 240 VAC, 50/60 Hz (auto-ranging)
- Max Unobstructed Distance: 150 ft (45.7 m)
- Weight: 6.6 lb (3.1 kg)
- Size: 38.9 x 2 x 6.2 in (987 x 49 x 157 mm)



WASH LIGHTS





IRC-6 Remote Included

Available in black or white



IRC-6 Remote Included



IRC-6 Remote Included

Optional D-Fi USB Transceiver



IRC-6 Remote Included

### EZpar 64 RGBA

EZpar 64 RGBA is a battery powered wash light designed to speed setup and free the mobile entertainer from the hassle of running cables. Its rechargeable lithium-ion battery lasts up to 20 hours on a single charge. EZpar 64 RGBA powers 180 red, green, blue and amber LEDs to deliver stunning colors. Built-in automated and sound-activated programs are accessible using the included IRC-6 remote and in DMX or master/slave mode. Fits best in the CHS-25 VIP Gear Bag.

- DMX Channels: 4 or 8
- Light Source: 180 LEDs (39 red, 39 green, 51 blue, 51 amber) 0.25 W (20 mA), 100,000 hours
- Beam Angle: 14°
- Illuminance: 1,325 lux @ 2 m
- Maximum Run Time (all on): up to 8 hours
- Maximum Run Time (single color): up to 20 hours
- Input Voltage: 100 to 240 VAC, 50/60 Hz (auto-ranging)
- Weight: 4 lb (1.9 kg)
- Size: 10.8 x 10.8 x 2.6 in (276 x 275 x 66 mm)



### EZpar 56

EZpar 56 is a battery powered wash light designed to speed up setup by freeing the mobile entertainer from the hassle of running cables. The rechargeable lithium-ion battery lasts up to 20 hours on a single charge and powers all 108 LEDs (36 red, 36 green, 36 blue) to deliver stunning colors. Built-in automated and sound-activated programs are accessible using the included IRC-6 remote and in DMX or master/slave mode. Compact, it easily fits into truss sticks. A built-in battery life indicator allows you to easily keep tabs on the remaining charge. Fits best in the optional CHS-25 VIP Gear Bag.

- DMX Channels: 3 or 7
- Light Source: 108 LEDs (36 red, 36 green, 36 blue) 0.25 W (20 mA), 100,000 hours
- Beam Angle: 14°
- Illuminance: 1,050 lux @ 2 m
- Maximum Run Time (all on): up to 8 hours
- Maximum Run Time (single color): up to 20 hours
- Input Voltage: 100 to 240 VAC, 50/60 Hz (auto-ranging)
- Weight: 2.8 lb (1.3 kg)
- Size: 9.5 x 8.6 x 2.5 in (242 x 219 x 64 mm)



### EZpar T6 USB

EZpar T6 USB is a battery operated, tri-color RGB LED wash light. D-Fi USB compatible for wireless master/slave or DMX control. Its rechargeable, lithium battery lasts up to 20 hours from a single charge and you can easily check the battery status with the built-in battery life indicator. Convenient access to RGB color mixing and static colors is available with or without DMX. Built-in automated programs via the IRC-6 remote or master/slave mode makes control easy.

- DMX Channels: 3 or 8
- Light Source: 6 LEDs (tri-color RGB) 3 W, (820 mA), 50,000 hours
- Beam Angle: 19°
- Illuminance: 1,440 lux @ 2 m
- Maximum Run Time (all on): up to 8 hours
- Maximum Run Time (single color): up to 20 hours
- Input Voltage: 100 to 240 VAC, 50/60 Hz (auto-ranging)
- Weight: 3.8 lb (1.7 kg)
- Size: 7.1 x 4.1 x 9.1 in (180 x 105 x 231 mm)



### EZwedge Tri

EZwedge Tri is a battery operated, tri-color LED wash light that fits perfectly inside Trusst Goal Post and Arch Kit truss systems. The rechargeable, lithium-ion battery lasts up to 20 hours from a single charge, and you can easily check the battery status with the built-in battery life indicator. EZwedge Tri attaches to 35-mm truss without the need for a bracket, using M10 or M12 threaded rig points. Its flicker-free operation is suitable for on-camera use and it provides smooth dimming with built-in dimming curves.

- DMX Channels: 3 or 8
- Light Source: 3 LEDs (tri-color RGB) 3 W (1,050 mA), 50,000 hours
- Beam Angle: 16°
- Illuminance: 1,066 lux @ 2 m
- Maximum Run Time (all on): up to 6 hours
- Maximum Run Time (single color): up to 20 hours
- Input Voltage: 100 to 240 VAC, 50/60 Hz (auto-ranging)
- Weight: 2.8 lb (1.3 kg)
- Size: 4.3 x 4.3 x 5.4 in (108 x 108 x 136 mm)







IRC-6 Remote Included

## EZGobo

EZGobo is a battery powered LED gobo projector that comes with 10 wedding-ready gobos; plus it accepts custom 35 mm color slide gobos, or create and print easily on transparency film. The long-lasting, rechargeable lithium battery eliminates the need for power cords. EZGobo also includes a magnet, scissor clamps and a threaded hole for multiple mounting options. It comes with an IRC-6 remote and the wireless on/off dimmable operation makes it very convenient.



Clamp it on pipe and truss



Magnetic base adheres to most metal surfaces and drop ceiling supports



Scissor clip attaches to drop ceiling supports

- Light Source: 1 LED (cool white) 10 W (1.4 A), 50,000 hours
- Zoom Angle: 16° to 31°
- Gobo Size: 25.8 mm outside, 18.6 mm image, 0.2 mm max. thickness
- Illuminance: (16°) 669 lux @ 2 m
- Illuminance: (31°) 207 lux @ 2 m
- Input Voltage: 8.4 VDC, 1 A (external power supply: 100 to 240VAC, 50/60 Hz)
- Weight: 2.2 lb (1 kg)
- Size: 6.5 x 4.3 x 6.7 in (167 x 110 x 170 mm)



10 Wedding-Ready Gobos Included



Compatible with IRC-6 Remote and D-Fi USB Transceiver

## Gobo Zoom USB

Gobo Zoom USB is a super compact gobo projector with a manual zoom, and wireless connectivity in master/slave and DMX mode, thanks to its embedded D-Fi USB compatibility. Gobo Zoom USB includes 10 wedding-ready gobos and can be controlled without DMX using the optional IRC-6 remote. Gobo Zoom USB accepts custom gobos, including patterns and messages easily printed on transparency film. Fits best in the CHS-40 VIP Gear Bag.

- DMX Channels: 2
- Light Source: 1 LED (cool white) 25 W (6 A), 50,000 hours
- Zoom Angle (manual): 17° to 28°
- Gobo Size: 25.74 mm outside, 19.38 mm max. image, 1 mm max. thickness
- Illuminance: (17°) 3,075 lux @ 2 m
- Illuminance: (28°) 1,121 lux @ 2 m
- Input Voltage: 100 to 240 VAC, 50/60 Hz (auto-ranging)
- Weight: 4.4 lb (2.1 kg)
- Size: 9.4 x 4.9 x 9.6 in (238 x 124 x 244 mm)



10 Wedding-Ready Gobos Included







Compatible with IRC-6 Remote and D-Fi USB Transceiver

Sit-flat housing for easy cable access

### COREpar 80 USB

COREpar 80 USB produces a full spectrum of light with the unsurpassed color mixing of COB (chip-on-board) technology. Includes a separate magnetic lens to provide the flexibility to go from an ultra-wide wash to a narrow beam in seconds. High frequency LED dimming achieves smooth LED fades and ensures a flicker-free performance in video applications. Multiple control options include DMX, master/slave and sound activation modes as well as wireless control thanks to D-Fi USB compatibility. Point-and-shoot operation of static colors and automated programs is also possible with the optional IRC-6 remote control.

- DMX Channels: 3 or 8
- Light Source: 1 COB LED (tri-color RGB) 80 W (2 A), 50,000 hours
- Beam Angle: 70° (without lens)
- Beam Angle: 25° (with lens)
- Illuminance: 405 lux @ 2 m (without lens)
- Illuminance: 2,143 lux @ 2 m (with lens)
- Input Voltage: 100 to 240 VAC, 50/60 Hz (auto-ranging)
- Weight: 4.2 lb (2 kg)
- Size: 7.9x5.6x9.9 in (200 x 143 x 253 mm)



Compatible with IRC-6 Remote and D-Fi USB Transceiver

Sit-flat housing for easy cable access

### COREpar 40 USB

COREpar 40 USB produces a full spectrum of light with the unsurpassed color mixing of COB (chip-on-board) technology. Includes a separate magnetic lens to provide the flexibility to go from an ultra-wide wash to a narrow beam in seconds. High frequency LED dimming achieves smooth LED fades and ensures a flicker-free performance in video applications. Multiple control options include DMX, master/slave and sound activation modes as well as wireless control thanks to D-Fi USB compatibility. Point-and-shoot operation of static colors and automated programs is also possible with the optional IRC-6 remote control. The unit's robust sit-flat housing features power and DMX outlets on the side.

- DMX Channels: 3 or 8
- Light Source: 1 COB LED (tri-color RGB) 40 W (2 A), 50,000 hours
- Beam Angle: 40° (without lens)
- Beam Angle: 20° (with lens)
- Illuminance: 243 lux @ 2 m (without lens)
- Illuminance: 1,660 lux @ 2 m (with lens)
- Input Voltage: 100 to 240 VAC, 50/60 Hz (auto-ranging)
- Weight: 3.4 lb (1.6 kg)
- Size: 5.2 x 7.4 x 9.5 in (132 x 189 x 242 mm)



Compatible with IRC-6 Remote and D-Fi USB Transceiver

Sit-flat housing for easy cable access

### COREpar UV USB

COREpar UV USB is a compact UV wash with COB (chip-on-board) LED technology, offering D-Fi USB compatibility for wireless master/slave or DMX control. It includes a separate magnetic lens to provide the flexibility to go from an ultra-wide wash to a narrow beam in seconds. High frequency LED dimming achieves smooth LED fades and ensures a flicker-free performance in video applications. Multiple control options include DMX, master/slave and sound activation modes as well as wireless control thanks to D-Fi USB compatibility.

- DMX Channels: 1 or 5
- Light Source: 1 COB LED (UV) 70 W (1.5 A), 50,000 hours
- Wavelength: 390 to 400 nm
- Coverage Angle: 100° without Fresnel lens, 50° with Fresnel lens
- Input Voltage: 100 to 240 VAC, 50/60 Hz (auto-ranging)
- Weight: 4.6 lb (2.1 kg)
- Size: 5.5 x 7.9 x 10 in (139 x 200 x 253 mm)



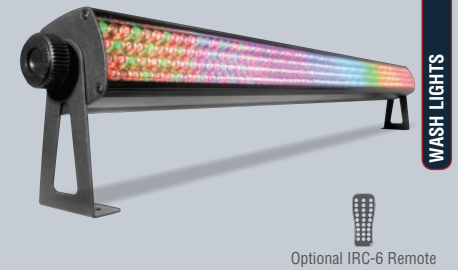
### Core 3x3

Core 3x3 combines a pixel-mapping effect and a powerful LED wash light into a single fixture powered by 9 tri-color RGB LEDs with COB (chip-on-board) technology. It utilizes a unique reflector cup to produce large pixels of light and create intriguing sweeping and chasing effects. You can easily combine multiple units using built-in coffin locks to construct an impressive array capable of large scale animations and chases. Fits best in the CHS-40 VIP Gear Bag.

- DMX Channels: 3, 5, 9, 27, or 31
- Light Source: 9 COB LEDs (tri-color RGB) 9 W (1.5 A), 50,000 hours
- Beam Angle: 47°
- Illuminance: 1,025 lux @ 2 m
- Input Voltage: 100 to 240 VAC, 50/60 Hz (auto-ranging)
- Weight: 13.6 lb (6.2 kg)
- Size: 6.2 x 13.6 x 13.6 in (156 x 344 x 344 mm)







### COLORband PiX USB

COLORband PiX USB is a linear LED wash light that functions as a pixel mapping effect, blinder or wall washer. It features D-Fi USB compatibility for wireless master/slave or DMX control. Pixel mapping functions mean you can create amazing animations and video effects. Access to multiple pre-built programs is available with or without DMX. The fixture's high-power, tri-color LEDs nearly eliminate multicolor shadows and its high-frequency LED dimming lets you achieve flicker-free operation suitable for video applications. Save time running cables and power cords by power linking multiple units. COLORband PiX USB is ideal for quiet applications due to its silent operation and no moving parts. Control of static colors and automated programs is easy with the optional IRC-6 remote. Fits best in the optional CHS-60 VIP Gear Bag. **Also available in outdoor-rated version (See page 17)**

- DMX Channels: 3, 4, 6, 7, 8, 9, 12, 18, 36 or 41
- Light Source: 12 LEDs (tri-color RGB) 3 W (1,000 mA), 50,000 hours
- Beam Angle: 27°
- Illuminance: 2,245 lux @ 2 m
- Input Voltage: 100 to 240 VAC, 50/60 Hz (auto-ranging)
- Weight: 4 lb (1.8 kg)
- Size: 38.9 x 2 x 6.2 in (987 x 49 x 157 mm)



### COLORband H9 USB

COLORband H9 USB is a full-size hex-color LED strip light that functions as a chase effect, blinder or wall washer. It is D-Fi USB compatible for wireless master/slave or DMX control. Its 6-in-1 LED technology generates a broad spectrum of colors and natural-looking color temperatures. Three zones of control create amazing chase effects and you can access multiple pre-built programs with or without DMX. Sound-activated and automated programs can be accessed with the optional IRC-6 remote. COLORband H9 USB is ideal for quiet applications due to its silent operation and no moving parts. Easily transports in the optional CHS-60 VIP Gear Bag.

- DMX Channels: 6, 9, 11, 18 or 23
- Light Source: 9 LEDs (hex-color RGBAW+UV) 10 W (2.3 A), 50,000 hours
- Beam Angle: 29°
- Illuminance: 2,254 lux @ 2 m
- Input Voltage: 100 to 240 VAC, 50/60 Hz (auto-ranging)
- Weight: 7 lb (3.2 kg)
- Size: 39.4 x 2.2 x 6.6 in (1000 x 56 x 168 mm)



### COLORband PiX-M USB

COLORband PiX-M USB, a moving LED strip light, is a versatile wall-wash light that can create dynamic sweeping, chase, animation and blinder effects thanks to its rotating base, pixel-mapping capabilities, and the ability to control each of its 10 LEDs separately. Its motors allow you to angle the light where it's needed. COLORband PiX-M USB features D-Fi USB compatibility for wireless master/slave or DMX control but you can also access dramatic, pre-built automated programs with or without DMX. Wireless, non-DMX operation is also available with the optional IRC-6 remote.

- DMX Channels: 5, 6, 8, 10, 17, 32 or 36
- Tilt: 245°
- Light Source: 10 LEDs (tri-color RGB) 9 W, (2A), 50,000 hours
- Beam Angle: 20°
- Illuminance: 6,120 lux @ 2 m
- Input Voltage: 100 to 240 VAC, 50/60 Hz (auto-ranging)
- Weight: 9.6 lb (4.4 kg)
- Size: 31 x 2.6 x 4.8 in (785 x 67 x 123 mm)



### COLORrail

COLORrail is a linear wash and effect light fitted with 320 RGB LEDs and featuring infrared technology. Create your own looks with eight sections of DMX control, or generate eye-catching chase and runway effects with built-in automated and sound-activated programs. Thanks to tightly packed and evenly distributed LEDs, color mixing and wall washing occur almost instantly. For wireless (non-DMX) control, use it with the optional IRC-6 remote. Fits best in the CHS-60 VIP Gear Bag.

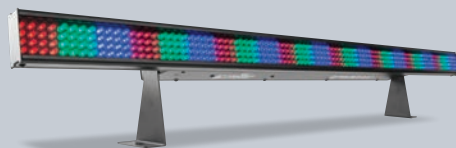
- DMX Channels: 2, 3, 4, 7, 14, or 26
- Light Source: 320 LEDs (128 red, 96 green, 96 blue) 0.25 W (20 mA), 100,000 hours
- Beam Angle: 28° x 12°
- Illuminance: 1,140 lux @ 2 m
- Input Voltage: 100 to 240 VAC, 50/60 Hz (auto-ranging)
- Weight: 6.3 lb (2.8 kg)
- Size: 43.5 x 3 x 6 in (1,062 x 88 x 90 mm)







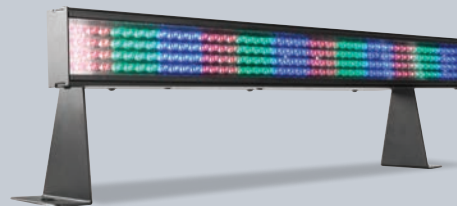
Compatible with IRC-6 Remote and  
D-Fi USB Transceiver



Optional IRC-6 Remote



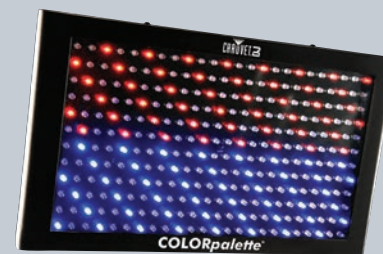
Optional  
COLORstrip Foot Controller



Optional IRC-6 Remote



Optional  
COLORstrip Foot Controller



Optional IRC-6 Remote



### COLORband T3 USB

COLORband T3 USB is a full-size LED strip light that functions as a chase effect, blinder or wall washer. It features three zones of control to create amazing chasing effects. Control is easy with convenient access to multiple pre-programs with or without DMX, and sound-activated programs. The unit is D-Fi USB compatible for wireless master/slave or DMX control. COLORband T3 USB includes multiple DMX personalities for a wide variety of programming styles and its silent operation makes it ideal for quiet applications. Fits best in the optional CHS-60 VIP Gear Bag.

- DMX Channels: 3, 6, 8, 9 or 14
- Light Source: 12 LEDs (tri-color RGB) 3W (700 mA), 50,000 hours
- Beam Angle: 27°
- Illuminance: 1,760 lux @ 2 m
- Input Voltage: 100 to 240 VAC, 50/60 Hz (auto-ranging)
- Weight: 5.8 lb (2.7 kg)
- Size: 38.9 x 2 x 6.2 in (987 x 49 x 157.3 mm)



### COLORstrip

COLORstrip is a compact, linear wash light designed for uplighting applications and eye candy effects. It features static colors as well as blackout, dimmer and strobe effects. Link multiple fixtures for dynamic runway chases. Control both with the (optional) COLORstrip Foot Controller (LED-FS1), which provides hands-free control with 4 pedals that trigger static colors, chase programs, speed of strobe and blackout. Fits best in the CHS-60 VIP Gear Bag.

- DMX Channels: 4
- Light Source: 384 LEDs (128 red, 128 green, 128 blue) 0.25 W (20 mA), 100,000 hours
- Beam Angle: 53° x 27°
- Illuminance: 1,104 lux @ 2 m
- Input Voltage: 100 to 240 VAC, 50/60 Hz (auto-ranging)
- Weight: 4.5 lb (2 kg)
- Size: 38 x 2.5 x 6 in (965 x 64 x 152 mm)



### COLORstrip Mini

COLORstrip Mini is a 19-inch long, 4 channel LED linear wash light. Static colors and RGB color mixing can be achieved with or without a DMX controller. Blackout, static, dimmer and strobe are included. Additional features include built-in automated and sound-activated programs via master/slave or DMX. Up to 31 units can be linked via master/slave for a color-changing runway effect. Fits best in the CHS-60 VIP Gear Bag.

- DMX Channels: 4
- Light Source: 192 LEDs (64 red, 64 green, 64 blue) 0.25 W (20 mA), 100,000 hours
- Beam Angle: 37° x 33°
- Illuminance: 1,192 lux @ 2 m
- Input Voltage: 100 to 240 VAC, 50/60 Hz (auto-ranging)
- Weight: 3.3 lb (1.5 kg)
- Size: 19 x 2.1 x 6.1 in (482 x 52 x 155 mm)



### COLORpalette

COLORpalette is a powerful bank system fitted with 288 RGB LEDs to emit colorful effects during any mobile application. Increase design options with full control of blackout, static and dimmer effects, color fading and full color mixing capabilities in up to 8 sections. It includes built-in, automated and sound-activated programs for plug-and-play operation, or you can create customized looks using 3, 6, 9, 15 or 27 channels of DMX control.

- DMX Channels: 3, 6, 9, 15 or 27
- Light Source: 288 LEDs (96 red, 96 green, 96 blue) 0.25 W (20 mA), 100,000 hours
- Beam Angle: 31° x 29°
- Illuminance: 1,813 lux @ 2 m
- Input Voltage: 100 to 240 VAC, 50/60 Hz (auto-ranging)
- Weight: 6.2 lb (2.8 kg)
- Size: 16.8 x 9.8 x 7 in (425 x 248 x 178 mm)







Compatible with IRC-6 Remote and D-Fi USB Transceiver



Compatible with IRC-6 Remote and D-Fi USB Transceiver



Compatible with IRC-6 Remote and D-Fi USB Transceiver



Compatible with IRC-6 Remote and D-Fi USB Transceiver

WASH LIGHTS

### SlimBANK T18 USB

SlimBANK T18 USB is a powerful wash light with 18 tri-color (RGB) LEDs that achieve smooth color mixing. Adjustable barn doors help direct and focus the light. Convenient control options include auto and sound-activation programs as well as DMX. USB compatibility provides fast and easy wireless options.

- DMX Channels: 3, 5, 9 or 13
- Light Source: 18 LEDs (tri-color RGB) 3 W (1,050 mA), 50,000 hours
- Beam Angle: 17°
- Illuminance: 4,120 lux @ 2 m
- Input Voltage: 100 to 240 VAC, 50/60 Hz (auto-ranging)
- Weight: 7.8 lb (3.6 kg)
- Size: 15.5 x 2.1 x 10.2 in (394 x 74 x 259 mm)



### SlimPAR QUV 12 USB

SlimPAR QUV 12 USB is a low-profile, high-output, quad-color (RGB+UV) LED wash light that is D-Fi USB compatible to allow wireless master/slave or DMX control. Punchy UV LEDs generate a broad spectrum of intense colors. Static colors and automated programs can be controlled easily with the optional IRC-6 remote. Multiple user-configurable settings are available to increase standalone versatility. Multiple units can be power linked to save time running cables and extension cords. With no moving parts, this silent, flicker-free fixture is ideal for on camera use.

- DMX Channels: 4 or 9
- Light Source: 12 LEDs (quad-color RGB+UV) 4 W (1.4 A), 50,000 hours
- Beam Angle: 15°
- Illuminance: 2,377 lux @ 2 m
- Input Voltage: 100 to 240 VAC, 50/60 Hz (auto-ranging)
- Weight: 4.6 lb (2.1 kg)
- Size: 9.7 x 3.6 x 11.5 in (247 x 92 x 293 mm)



### SlimPAR H6 USB

SlimPAR H6 USB is a low-profile RGBAW+UV LED wash light with D-Fi USB compatibility for wireless master/slave or DMX control. It also works in sound-active mode. Built-in dimming curves provide smooth LED fading, and the 6-in-1 LED technology generates a broad spectrum of natural-looking colors. Precise colors can also be created with the built-in LED display. Point-and-shoot operation of static colors and automated programs is possible with the optional IRC-6 remote. Compact designed, it works as a truss warmer.

- DMX Channels: 6, 8 or 12
- Light Source: 6 LEDs (hex-color RGBAW+UV) 10 W (2.4 A), 50,000 hours
- Beam Angle: 23°
- Illuminance: 747 lux @ 2 m
- Input Voltage: 100 to 240 VAC, 50/60 Hz (auto-ranging)
- Weight: 3.4 lb (1.6 kg)
- Size: 8.3 x 3.6 x 9.6 in (211 x 91.5 x 244 mm)



### SlimPAR Q6 USB

SlimPAR Q6 USB is a low-profile, high-output quad-color (RGBA) LED wash light that features 6 LEDs and D-Fi USB compatibility for instant wireless connectivity. It is controllable via master/slave, DMX, standalone modes or the optional point-and-shoot IRC-6 remote. It also features multiple user-configurable settings. SlimPAR Q6 USB creates natural-looking color temperatures thanks to punchy amber LEDs. Its flicker free operation makes it well suited for video productions. With no moving parts, it is ideal for applications where silence is essential.

- DMX Channels: 4 or 9
- Light Source: 6 LEDs (quad-color RGBA) 4 W (0.9 A), 50,000 hours
- Beam Angle: 19°
- Illuminance: 2,684 lux @ 2 m
- Input Voltage: 100 to 240 VAC, 50/60 Hz (auto-ranging)
- Weight: 3.4 lb (1.6 kg)
- Size: 8.3 x 3.6 x 9.6 in (212 x 92 x 244 mm)







Compatible with IRC-6 Remote and  
D-Fi USB Transceiver



Compatible with IRC-6 Remote and  
D-Fi USB Transceiver



Compatible with IRC-6 Remote and  
D-Fi USB Transceiver



MET  
c US

### SlimPAR Q12 USB

SlimPAR Q12 USB is a low-profile, high-output quad-color (RGBA) LED wash light with D-Fi USB for instant wireless connectivity. It is controllable via master/slave, DMX, standalone modes or the optional point-and-shoot IRC-6 remote. It also features multiple user-configurable settings. SlimPAR Q12 USB creates natural-looking color temperatures thanks to punchy amber LEDs. Its flicker-free operation makes it well suited for video productions. With no moving parts, it is ideal for applications where silence is essential. Multiple units can be power linked to save time running cables and extension cords. Fits best in the CHS-30 VIP Gear Bag. **Also sold in packs, see below.**

- DMX Channels: 4 or 9
- Light Source: 12 LEDs (quad-color RGBA) 4 W (0.8 A), 50,000 hours
- Beam Angle: 17°
- Illuminance: 4,960 lux @ 2 m
- Input Voltage: 100 to 240 VAC, 50/60 Hz (auto-ranging)
- Weight: 4.8 lb (2.2 kg)
- Size: 9.7 x 3.6 x 11.5 in (247 x 92 x 293 mm)



### SlimPACK Q12 USB



Includes 1 Carry Bag, 4 SlimPAR Q12 USB  
and 3 DMX Cables

### SlimPAR T12 USB

SlimPAR T12 USB is a high output tri-color (RGB) LED wash light with D-Fi USB compatibility to allow instant wireless control in DMX or master/slave mode. Tri-color LEDs virtually eliminate distracting multicolored shadows. Its even, flicker-free output makes it ideal for front light applications and use in video productions. The optional IRC-6 remote can be used to access automated programs and control static colors. Compact enough to fit inside truss sticks, SlimPAR T12 USB is best transported in the CHS-30 VIP Gear Bag. **Also sold in packs, see below.**

- DMX Channels: 3 or 8
- Light Source: 12 LEDs (tri-color RGB) 3 W (1 A), 50,000 hours
- Beam Angle: 15°
- Illuminance: 3,801 lux @ 2 m
- Input Voltage: 100 to 240 VAC, 50/60 Hz (auto-ranging)
- Weight: 4 lb (1.8 kg)
- Size: 8.9 x 3.3 x 9.9 in (227 x 84 x 252 mm)



### SlimPACK T12 USB



Includes 1 Carry Bag, 4 SlimPAR T12 USB  
and 3 DMX Cables

### SlimPAR T6 USB

SlimPAR T6 USB is a low profile, high output tri-color (RGB) LED wash light with D-Fi USB compatibility for wireless master/slave or DMX control. As versatile as it is dependable, this compact fixture is an ideal truss warmer. Because of its even output, it's also an excellent front light, and its flicker-free output makes it an ideal light for broadcast/video applications. Tri-color LEDs virtually eliminate multicolored shadows. SlimPAR T6 USB has multiple user-configurable settings, and built-in automated programs are easily accessed via master/slave or the optional IRC-6 remote. Multiple units can be power linked. The CHS-30 VIP Gear Bag is recommended for transport.

- DMX Channels: 3 or 8
- Light Source: 6 LEDs (tri-color RGB) 3 W (800 mA), 50,000 hours
- Beam Angle: 15°
- Illuminance: 1,621 lux @ 2 m
- Input Voltage: 100 to 240 VAC, 50/60 Hz (auto-ranging)
- Weight: 2.4 lb (1.1 kg)
- Size: 7.1 x 3.3 x 9 in (181 x 84 x 226 mm)



### SlimPAR 64

SlimPAR 64 houses 180 red, green and blue LEDs in a slim casing that fits almost anywhere. This efficient wash light is controllable in 3- or 7-channel DMX mode. Activate pulse effects at variable speed or built-in automated and sound-activated programs. For added convenience, it also offers static colors and RGB color mixing with or without DMX. Power linking multiple units greatly simplifies setup and tear down. Fits best in the CHS-25 VIP Gear Bag.

- DMX Channels: 3 or 7
- Light Source: 180 LEDs (60 red, 60 green, 60 blue) 0.25 W (20 mA), 100,000 hours
- Beam Angle: 14°
- Illuminance: 1,241 lux @ 2 m
- Input Voltage: 100 to 240 VAC, 50/60 Hz (auto-ranging)
- Weight: 2.8 lb (1.3 kg)
- Size: 9.7 x 11.1 x 2.5 in (246 x 282 x 64 mm)







IRC-6 Remote Included

### SlimPAR 64 RGBA

SlimPAR 64 RGBA houses 180 red, green, blue and amber LEDs in a discreet, ultra-compact casing. It offers static colors and color mixing with or without DMX. Use built-in automated and sound-activated programs as well as pulse effects at variable speed for a show on the fly. Or create your own looks using a 4- or 8-channel DMX mode. Fits best in the CHS-25 VIP Gear Bag.

- DMX Channels: 4 or 8
- Light Source: 180 LEDs (39 red, 39 green, 51 blue, 51 amber) 0.25 W (20 mA), 100,000 hours
- Beam Angle: 14°
- Illuminance: 1,325 lux @ 2 m
- Input Voltage: 100 to 240 VAC, 50/60 Hz (auto-ranging)
- Weight: 2.8 lb (1.3 kg)
- Size: 10.8 x 10.8 x 2.6 in (276 x 275 x 66 mm)



### SlimPAR 56

SlimPAR 56 is a LED wash light in a sleek white or black housing. Powered by 108 red, green and blue LEDs, it blends into any décor with ease. Customize light shows in 3- or 7-channel DMX mode. Fits best in the CHS-SP4 VIP Gear Bag.

**Also sold in packs, see below.**

- DMX Channels: 3 or 7
- Light Source: 108 LEDs (36 red, 36 green, 36 blue) 0.25 W (20 mA), 100,000 hours
- Beam Angle: 14°
- Illuminance: 876 lux @ 2 m
- Input Voltage: 100 to 240 VAC, 50/60 Hz (auto-ranging)
- Weight: 2.7 lb (1.2 kg)
- Size: 9.5 x 8.8 x 2.2 in (241 x 224 x 56 mm)



### SlimPAR 38

SlimPAR 38 sports an ultra slim casing that fits almost anywhere. This efficient LED wash light can be controlled in 3- or 7-channel DMX mode. For effects on the fly, activate variable speed pulse effects and built-in automated and sound-activated programs. Fits best in the CHS-SP4 VIP Gear Bag.

- DMX Channels: 3 or 7
- Light Source: 75 LEDs (25 red, 25 green, 25 blue) 0.25 W (20 mA), 100,000 hours
- Beam Angle: 14°
- Illuminance: 531 lux @ 2 m
- Input Voltage: 100 to 240 VAC, 50/60 Hz (auto-ranging)
- Weight: 1.8 lb (0.8 kg)
- Size: 7.3 x 8.1 x 2.5 in (185 x 206 x 64 mm)



### Wedge Tri

Wedge Tri is a triangle-shaped, DMX-controllable LED wash light designed to fit inside triangular truss systems from most manufacturers. It fits perfectly inside Trusst Goal Post and Arch Kit truss systems and easily attaches to 35 mm truss, using M10 or M12 threaded rig points. Control static colors and automated programs with the included IRC-6 remote, or use the built-in digital display to easily create any color without DMX.

**Also available in battery operated wireless version (See page 26)**

- DMX Channels: 3 or 8
- Light Source: 3 LEDs (tri-color RGB) 3 W (1,050 mA), 50,000 hours
- Beam Angle: 16°
- Illuminance: 1,066 lux @ 2 m
- Input Voltage: 100 to 240 VAC, 50/60 Hz (auto-ranging)
- Weight: 1.4 lb (0.6 kg)
- Size: 4.3 x 4.3 x 4.1 in (108 x 108 x 104 mm)



### SlimPACK 56 LT



Includes 1 Carry Bag, 4 SlimPAR 56 and 3 DMX Cables





### LED Pinspot 3

LED Pinspot 3 is a palm-sized pinspot that can be turned on/off and dimmed from a distance via the optional IRC-6 remote. A pack of five gels is included to let you easily change colors.

- Light Source: 1 LED (cool white) 5 W (1.6 A), 50,000 hours
- Beam Angle: 8°
- Illuminance: 3,558 lux @ 2 m
- Input Voltage: 100 to 240 VAC, 50/60 Hz (auto-ranging)
- Weight: 1 lb (0.5 kg)
- Size: 4.6 x 4.1 x 2.7 in (116.5 x 104 x 68 mm)

Color Gels Included



### LED Pinspot 2

LED Pinspot 2 includes two front focal lens options to produce hard-edged beams for a variety of applications. It weighs less than a pound and is powered by a 3 W white LED. The auto switching power supply allows the fixture to adapt to the voltage provided, ranging from 100 V to 240 V.

- Light Source: 1 LED (cool white) 3 W (700 mA), 50,000 hours
- Beam Angle: 6° (installed), 9° (included)
- Illuminance (6°): 4,120 lux @ 2 m
- Illuminance (9°): 1,335 lux @ 2 m
- Input Voltage: 100 to 240 VAC, 50/60 Hz (auto-ranging)
- Weight: 0.9 lb (0.4 kg)
- Size: 7.6 x 4.2 x 5.9 in (193 x 105 x 148 mm)

Color Gels Included



### LED Followspot 75ST

LED Followspot 75ST sheds the spotlight precisely where it needs to be with a focused hard-edge beam and smooth LED dimming. Equipped with a 75 W LED, it features a single gobo slot to project crisp patterns and can also perform electronic strobe effects. It is easy to set up and tear down, and comes with a free tripod. It's the perfect choice as an entry-level followspot for stages, school functions and events where focus needs to be on a speaker or guest of honor.

- DMX Channels: 3
- Light Source: 1 LED (cool white) 75 W (18 A), 50,000 hours
- Zoom Angle (manual): 14° to 20°
- Gobo Size: 23.7 mm outside, 21.3 mm image, 1 mm max. thickness
- Colors: 7 + white
- Illuminance (14°): 8,140 lux @ 2 m
- Illuminance (20°): 4,650 lux @ 2 m
- Input Voltage: 120/230 VAC, 50/60 Hz (switchable)
- Weight: 13.3 lb (6 kg)
- Size: 22 x 10.8 x 11.5 in (560 x 276 x 292 mm)



Colors



### LED Followspot 120ST

LED Followspot 120ST is a portable, LED followspot that emits a tight beam powered by a bright 120 W LED to highlight actors at far distances. Built-in CTO filter lowers color temperature to match tungsten lamps. Control options include DMX and manual modes and you can simplify professional fading with smooth LED dimming. Focus the light where it is needed using the mechanical iris to reduce the beam's diameter and deliver silent operation with fast electronic strobe and no moving parts. Set up and tear down in seconds with the included tripod.

- DMX Channels: 3
- Light Source: 1 LED (cool white) 120 W (30.6 A), 50,000 hours
- Zoom Angle (manual): 14° to 20°
- Colors: 7 + white
- Illuminance (14°): 16,060 lux @ 2 m
- Illuminance (20°): 7,900 lux @ 2 m
- Input Voltage: 100 to 240 VAC, 50/60 Hz (auto-ranging)
- Weight: 16.6 lb (7.5 kg)
- Size: 22.9 x 11 x 13.4 in (582 x 279 x 341 mm)



Colors







IR Remote Included

### Scorpion Dual

Scorpion Dual is a dual Fat Beam aerial laser effect, perfect for events with fog or haze. Its dual mirror output makes a great centerpiece or side accent and offers 32 patterns including the popular “laser sky” effect. Generate customized and everchanging laser shows using programmable pan, tilt, and zoom effects with separate X, Y, and Z rolling effects and scan speed adjustment. Easily operate it in automatic, master/slave, manual or sound-activated mode or wirelessly control it using the included IR Remote.

- DMX Channels: 10
- Light Source: 532 nm/50 mW (green) laser diode
- Zoom Angle: 1° to 29°
- Input Voltage: 100 to 240 VAC, 50/60 Hz (auto-ranging)
- Weight: 5.4 lb (2.4 kg)
- Size: 8.9 x 8.1 x 7.6 in (226 x 205 x 194 mm)

#### Laser light.

#### Avoid direct eye exposure.

Class IIIa laser product.

Classified per 21 CFR 1040.10 & .11

Complies with FDA performance standards for laser products except for deviations pursuant to Laser Notice No. 50, dated June 24, 2007.



IR Remote Included

### Scorpion Storm FX RGB

Scorpion Storm FX RGB is a tri-colored laser light that creates a star field effect of multicolored patterns to enhance your event with depth and movement. Scorpion Storm FX RGB includes an IR remote for wireless control of all three colors and sound-activated auto programs. Fits best in the CHS-40 VIP Gear Bag.

- DMX Channels: 7
- Light Source: 650 nm/100 mW (red) laser diode, 532 nm/40 mW (green) laser diode, 450 nm/100 mW (blue) laser diode
- Coverage Angle: 100°
- Input Voltage: 100 to 240 VAC, 50/60 Hz (auto-ranging)
- Weight: 3.8 lb (1.7 kg)
- Size: 9.1 x 7.6 x 7.5 in (232 x 194 x 191 mm)

#### Laser light.

#### Avoid direct eye exposure.

Class 3R laser product.

Complies with FDA performance standards for laser products except for deviations pursuant to Laser Notice No. 50, dated June 24, 2007.



IRC-6 Remote Included

### EZ Laser RGFX

EZ Laser RGFX is a compact battery operated laser that projects thousands of red and green laser beams. The red and green diodes can be independently controlled to create dazzling customized effects that cover a wide area and impress even without fog. Generate eye-catching effects with sound-activated and automated programs. The included IRC-6 remote wirelessly sets colors and rotation speeds. A single charge of the rechargeable, lithium ion battery can achieve a run time of up to six hours.

- Light Source: 650 nm/80 mW (red) laser diode, 532nm/30 mW (green) laser diode
- Input Voltage: 12 VDC, 1 A (external power supply: 100 to 240 VAC, 50/60 Hz)
- Weight: 1 lb (0.5 kg)
- Size: 4.19 x 5.43 x 5.05 in (106.43 x 138 x 128.52 mm)

#### Laser light.

#### Avoid direct eye exposure.

Class 3R laser product.

Complies with FDA performance standards for laser products except for deviations pursuant to Laser Notice No. 50, dated June 24, 2007.







#### 4BAR Tri USB

4BAR Tri USB is a complete wash lighting solution with high-intensity tri-color (RGB) LEDs that can be controlled wirelessly via the included wireless footswitch or the optional IRC-6 controller. It also features D-Fi USB compatibility for wireless master/slave or DMX control. A convenient tripod stand and carrying bag are included for quick and easy setup and tear down.

- DMX Channels: 3 or 15
- Light Source: 28 LEDs (tri-color RGB) 3 W (1 A), 50,000 hours
- Beam Angle: 18°
- Illuminance: 2,330 lux @ 2 m (per pod)
- Input Voltage: 100 to 240 VAC, 50/60 Hz (auto-ranging)
- Weight: 20.6 lb (10.8 kg)
- Size: 41.3 x 2 x 10.6 in (1,050 x 50 x 270 mm)



#### 4BAR USB

4BAR USB is a complete wash lighting solution for mobile entertainers. D-Fi USB compatible for wireless master/slave or DMX control, it also includes a wireless footswitch that can control multiple units. Create synchronized light shows using built-in automated programs with the optional IRC-6 remote.

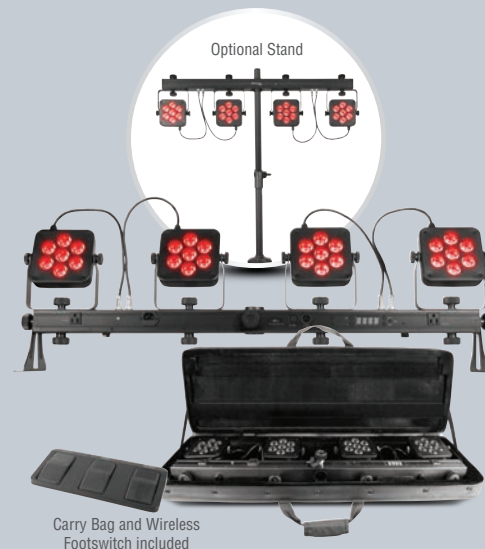
- DMX Channels: 3 or 15
- Light Source: 432 LEDs (144 red, 144 green, 144 blue) 0.25 W (20 mA), 100,000 hours
- Beam Angle: 21°
- Illuminance: 725 lux @ 2 m (per pod)
- Input Voltage: 100 to 240 VAC, 50/60 Hz (auto-ranging)
- Weight: 10.8 lb (4.9 kg)
- Size: 47.4 x 2 x 11 in (1,205 x 50 x 284.5 mm)



#### 4BAR LT USB

4BAR LT USB is a complete wash lighting system with D-Fi USB compatibility for wireless master/slave or DMX control. Four fully adjustable round pods each with three 9 W LEDs achieve total room or stage coverage. Create coordinated light shows in master/slave mode and easily control static colors and automated programs with the optional IRC-6 remote. You can easily set up and tear down in seconds with the included tripod, carry bag and footswitch.

- DMX Channels: 3 or 15
- Light Source: 12 LED (tri-color RGB) 9 W (1.2 A), 50,000 hours
- Beam Angle: 16°
- Illuminance: 2,053 lux @ 2 m
- Input Voltage: 100 to 240 VAC, 50/60 Hz (auto-ranging)
- Weight: 10.8 lb (4.9 kg)
- ... Size: 36.1 x 3.7 x 10.8 in (918.1 x 95 x 274.3 mm)



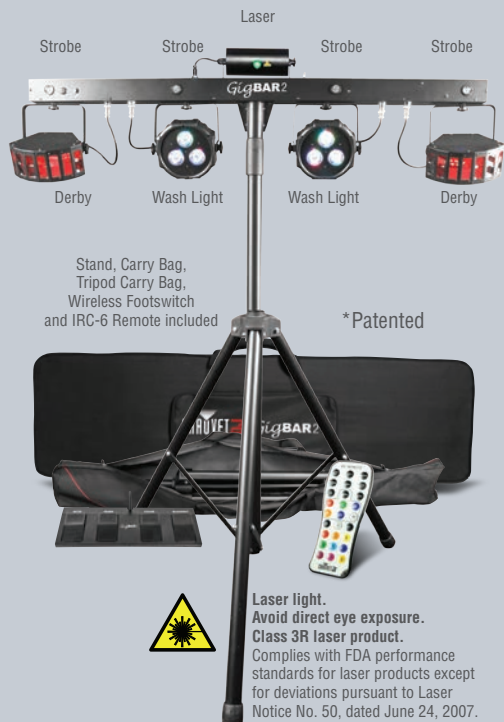
#### 4BAR Flex T USB

4BAR Flex T USB is one of the most versatile and convenient pack-n-go lighting systems anywhere. The unit features unmatched flexibility with the addition of D-Fi USB compatibility for wireless master/slave or DMX control. You can maximize setup possibilities and configurations with two included L-brackets and the unit mounts to most tripods or speaker stands, without the need for additional clamps, using the pass-through hole. Create the ultimate light show by mounting up to four additional fixtures to the top of the 4BAR Flex T USB and provide electricity to the additional lights by using the built-in Edison plugs.

- DMX Channels: 3 or 15
- Light Source: 28 LEDs (tri-color RGB) 3 W, (800 mA), 50,000 hours
- Beam Angle: 18°
- Illuminance: 2,330 lux @ 2 m
- Input Voltage: 100 to 240 VAC, 50/60 Hz (auto-ranging)
- Weight: 11.6 lb (5.3 kg)
- Size: 47.4 x 5.5 x 14.75 in (1,205 x 140 x 374.8 mm)







**NEW**



### GigBAR Flex

GigBAR Flex is an ultra-convenient 3-in-1 Pack-n-Go lighting system with a pair of LED Derbys, LED Quad-color pars (RGB + UV for increased color mixing and effects) and strobes. A pass-through mounting hole for flexible mounting options with various stage and speaker stands and adjustable leg brackets adds versatility.

- DMX Channels: 3, 8 or 20
- Light Source (pars): 6 LEDs (quad-color RGB + UV) 3.5 W (1 A), 50,000 hours
- Light Source (strobe): 4 LEDs (white & UV) 5 W (1.5 A), 50,000 hours
- Light Source (derby): 6 LEDs (2 red, 2 green, 2 blue) 5 W (1.6 A), 50,000 hours
- Laser: 650 nm/100 mW (red) laser diode, 532 nm/30 mW (green) laser diode
- Stand Height: 4.8 ft to 8.3 ft (1.5 to 2.5 m)
- Input Voltage: 100 to 240 VAC, 50/60 Hz (auto-ranging)
- Weight: 14.4 lb (6.6 kg)
- Size: 46.7 x 4.3 x 15.2 in (1185 x 110 x 386.5 mm)



### 6SPOT

6SPOT is a LED color-changer system, complete with six heads that can be individually oriented and controlled. Each head contains a high-power, tri-color LED. 6SPOT can be controlled in DMX mode, but also features exciting automated or sound-activated programs. It easily slides onto most standard tripod stands, and can be mounted onto truss, using built-in safety bolts.

- DMX Channels: 8
- Light Source: 6 LEDs (tri-color RGB) 3 W (1.1 A), 50,000 hours
- Beam Angle: 11°
- Illuminance: 192 lux @ 2 m (per pod)
- Input Voltage: 100 to 240 VAC, 50/60 Hz (auto-ranging)
- Weight: 10.1 lb (4.6 kg)
- Size: 35.5 x 2.2 x 6.5 in (902 x 56 x 165 mm)



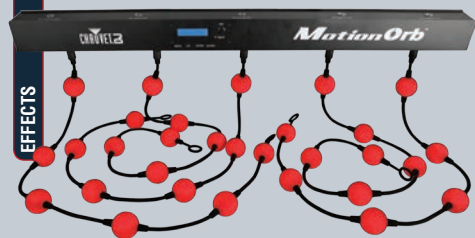
### 4PLAY

4PLAY is fitted with four LED moonflowers containing red, green, blue and white LEDs that produce razor-sharp rotating beams. Control options include automated, sound and DMX modes. It fits most standard tripods, including speaker stands and the 4BAR tripod. Carry bag included.

- DMX Channels: 6
- Light Source: 228 LEDs (48 red, 72 green, 72 blue, 36 white) 0.25 W (20 mA), 100,000 hours
- Input Voltage: 100 to 240 VAC, 50/60 Hz (auto-ranging)
- Weight: 12.7 lb (5.7 kg)
- Size: 33 x 3.5 x 12.5 in (838 x 89 x 318 mm)







Easily store and transport in the included carry bag



Compatible with IRC-6 Remote and D-Fi USB Transceiver



Compatible with IRC-6 Remote and D-Fi USB Transceiver



Shown with Trusst Goal Post Kit (sold separately)



Carry Bag and Controller included

## MotionOrb

MotionOrb is a fantastic décor light made up of 55 color-changing LED orbs in strings that can be hung like a curtain, drawn to one side, or draped across the ceiling. MotionOrb comes standard in a two meter length, but can be expanded up to four meters with the optional MotionOrb EXT Kit. MotionOrb comes with a variety of built-in color changes and chases, and when operated in DMX mode it can be pixel mapped! In master/slave mode, color changes and chases can be expanded across three MotionOrb products for a wall full of coordinated patterns. MotionOrb can be operated via the control panel, or with a DMX controller. MotionOrb comes with a custom gear bag for easy, safe, and great looking transportation.

- DMX Channels: 9, 165, 240 or 315
- Light Source: 110 LEDs (tri-color RGB) SMD (100 mA), 50,000 hours
- Input Voltage: 100 to 240 VAC, 50/60 Hz (auto-ranging)
- Weight: 8.2 lb (3.7 kg)
- Size: 39.9 x 2.6 x 85.5 in (1,013 x 65 x 2,343 mm)



Mounts to most truss systems using 10 mm and 12 mm threaded bolt holes



Increase the length of the MotionOrb with the MotionOrb EXT Kit (sold separately)

## Festoon

Festoon is a dynamic outdoor-rated party décor light featuring the vintage look and feel of standard party light strings. It is completely pixel-mappable for ultimate show and programming creativity. Built-in automated programs also create complex looks in seconds. Festoon comes with a 15-meter strand of 20 LED bulbs and is expandable up to three strands per controller. The unit features D-Fi USB compatibility for wireless master/slave or DMX control. Non-DMX control is possible in standalone mode from the digital display or optional IRC-6 remote. Eyelets are on every lamp holder and a variety of three party décor options such as paper lanterns can be clipped to Festoon to increase design flexibility. Fits best in the CHS-50 gear bag.

- DMX Channels: 3, 8, 9, 60, 120 or 180
- Light Source: 5 SMD LEDs (tri-color RGB) 0.1 W, (20 mA), 50,000 hours
- Input Voltage: 100 to 240 VAC, 50/60 Hz (auto-ranging)
- IP Rating: IP43
- Weight (Controller): 10.4 lb (4.8 kg)
- Size (String): 590.5 x 2.4 x 5.2 in (15,000 x 60 x 133 mm)
- Size (Controller): 7.5 x 8.4 x 2 in (190 x 213 x 48.7 mm)



**Festoon String**  
15 m String of 20 IP Rated bulb sockets (sold separately)



**Festoon 20RGB**  
Pack of 20 IP rated bulbs (sold separately)



**Festoon String**  
15 m String of 20 IP Rated bulb sockets (sold separately)



**Festoon 20VW**  
Pack of 20 IP rated bulbs (sold separately)

- DMX Channels: 3, 8, 9, 60, 120 or 180
- Light Source: 3 SMD LEDs (tri-color warm white, cool white, amber) 0.2 W (50 mA) per bulb, 50,000 hours
- Input Voltage: 100 to 240 VAC, 50/60 Hz (auto-ranging)
- IP Rating: IP43
- Weight (Controller): 10.4 lb (4.8 kg)
- Size (String): 590.5 x 2.4 x 5.2 in (15,000 x 60 x 133 mm)
- Size (Controller): 7.5 x 8.4 x 2 in (190 x 213 x 48.7 mm)

## MotionDrape LED

MotionDrape LED is an ideal backdrop for stages and mobile shows. It has 176 tri-color SMD LEDs set in a matrix across the 6.6-by-9.8 ft (2 x 3 m) surface. Thirty animated effects range from color fades to a graphic equalizer effect. MotionDrape LED is easy to set up using the grommets on all sides and is perfectly sized to fit the CHAUVET DJ CH-31 portable trussing system (See page 61) or the Trusst Goal Post Kit (See page 70).



Carry Bag and Controller included

## MotionSet LED

MotionSet LED combines the popular MotionDrape LED and MotionFaçade LED into one sizzling package designed for the mobile entertainer. With only one controller, you can easily control and synchronize the two displays and create one amazing presentation.

- DMX Channels: 8
- Light Source: 176 SMD LEDs (tri-color RGB) (20 mA), 50,000 hours
- Input Voltage: 100 to 240 VAC, 50/60 Hz (auto-ranging)
- Weight (Controller): 1.8 lb (0.8 kg)
- Weight (Drape): 9.8 lb (4.4 kg)
- Size (Controller): 5.3 x 9.6 x 2 in (135 x 243 x 50 mm)
- Size (Drape): 6.6 x 9.8 ft (2 x 3 m)





NEW



EFFECTS

## Wash FX 2

Wash FX2 is a multi-purpose effect light with 18 Quad-color (RGB+UV) LEDs that can be used as a regular wash light or eye-candy effect with 6 chasing zones. Powerful UV LEDs create a psychedelic blacklight effect and provide brilliant color-mixing capabilities. Wash FX 2 can be controlled with the IRC-6 wireless remote for wireless triggering or in stand-alone, DMX, IR or master/slave modes. Fits best in the CHS-40 VIP Gear Bag.



- DMX Channels: 3, 8 or 28
- Light Source: 18 LEDs (quad-color RGB+UV) 6 W, 2 A, 50,000 hours life
- Illuminance: 1,795 lux @ 2 m
- Input Voltage: 100 to 240 VAC, 50/60 Hz (auto-ranging)
- Weight: 5.8 lbs (2.6 kg)
- Size: 12.2 x 5.5 x 9 in (310 x 140 x 230 mm)



## FXarray Q5

FXarray Q5 is an exciting and versatile quad-color LED wash light. It features an array of RGB+UV LEDs to spread light evenly across the dance floor with brilliant eye candy effects. Control the wash LEDs and the RGB SMDs separately for dynamic light shows and generate eye-catching effects with sound-activated and automated programs. FXarray Q5 is compatible with the IRC-6 for flexible control over all features.

- DMX Channels: 3, 10 or 30
- Light Source:
  - Center Pods: 5 LEDs (quad-color RGB+UV) 6W, (2.1 A), 50,000 hours
  - Outside SMDs: 30 SMDs (tri-color RGB) 0.3 W, (0.1 A), 50,000 hours
- Input Voltage: 100 to 240 VAC, 50/60 Hz (auto-ranging)
- Weight: 3.4 lb (1.6 kg)
- Size: 11 x 8 x 6 in (285 x 207 x 155 mm)



## FXpar 3

FXpar 3 is a compact effect par with multiple technologies in a single fixture. It includes three 8 W quad-color (RGB+UV) center LEDs, RGB SMD LED lights and SMD strobes. Separate control of these features makes creating breathtaking effects easy. FXpar 3 is compatible with the IRC-6 for flexible control over all features and includes powerful sound-activated and automated programs.

- DMX Channels: 3 or 9
- Light Source:
  - Center Pods: 3 LEDs (quad-color RGB+UV) 8 W, (2.4 A), 50,000 hours
  - Center SMDs: 18 LEDs (tri-color RGB) 0.5 W, (0.2 A), 50,000 hours
  - Strobe: 27 LEDs (cool white) 0.5 W, (0.1 A), 50,000 hours
- Input Voltage: 100 to 240 VAC, 50/60 Hz (auto-ranging)
- Weight: 2.2 lb (1.1 kg)
- Size: 10.3 x 8.4 x 3 in (264 x 214 x 76.9 mm)



## Abyss USB

Abyss USB is a pleasing multicolored water effect that shines through any environment with or without fog using upgraded, high power LEDs. It can be controlled wirelessly via master/slave or DMX thanks to its D-Fi USB compatibility. A dichroic color wheel and two glass effect wheels are independently controllable to expand design options. Non-DMX control is possible in standalone mode, from the digital display or optional IRC-6 remote control. Save time running cables and extension cords by power linking multiple units. Fits best in the CHS-40 VIP Gear Bag.

- DMX Channels: 3
- Light Source: 1 LED (cool white) 30 W (7 A), 50,000 hours
- Coverage Angle: 59°
- Colors: 5 + white, Rainbow scroll
- Illuminance: 715 lux @ 2 m
- Input Voltage: 100 to 240 VAC, 50/60 Hz (auto-ranging)
- Weight: 5.8 lb (2.7 kg)
- Size: 7.7 x 9 x 9.7 in (195 x 228 x 246 mm)



Colors







### Helicopter Q6

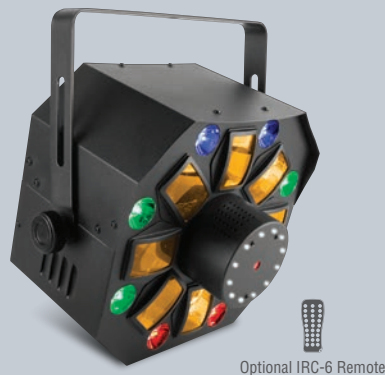
Helicopter Q6 is a multi-effect effect light designed to dazzle and energize the dance floor. It features adjustable RGBW beams, a round SMD strobe and a red/green pattern laser on a rotating base with continuous pan rotation creating unique and amazing effects. Its narrow, razor-sharp beams of RGBW light create astonishing aerial effects and the rotating red and green laser produces thousands of razor sharp beams that cover a large area. Helicopter Q6 is easy to control using automated and sound-activated programs, master/slave, DMX or an optional IRC-6 remote.

- DMX Channels: 3 or 16
- Light Source
  - Beam: 6 (RGBW) 6.9 W, (2 A), 50,000 hours
  - Strobe: 24 LEDs (white) 1 W, (281 mA), 50,000 hours
  - Laser: 650 nm/100 mW (red) laser diode, 532 nm/30 mW (green) laser diode
- Input Voltage: 100 to 240 VAC, 50/60 Hz (auto-ranging)
- Weight: 8.8 lb (4.0 kg)
- Size: 23.8 x 7.2 x 10.5 in (605 x 184 x 268 mm)

#### Laser light.

#### Avoid direct eye exposure.

Complies with FDA performance standards for laser products except for deviations pursuant to Laser Notice No. 50, dated June 24, 2007.



### Swarm Wash FX

Swarm Wash FX is a 4-in-1 LED effect fixture that combines an RGBAW rotating derby, RGB+UV wash, red/green laser, and a ring of white SMD strobes. Create an endless array of looks by individually controlling each effect via DMX and master/slave modes, or an optional IRC-6 remote. Other features include automated and sound-activated programs and a user-friendly menu structure. Multiple units can be power linked to save time running cables and extension cords. Fits best in the CHS-40 VIP Gear Bag.

- DMX Channels: 2 or 18
- Light Source:
  - Rotating Derby: 5 LEDs (1 red, 1 green, 1 blue, 1 amber, 1 white) 2 W (650 mA) 50,000 hours
  - Wash: 8 LEDs (quad-color RGB+UV) 1.5 W (600 mA), 50,000 hours
  - Strobe: 12 LEDs (white) 1 W (300 mA), 50,000 hours
  - Laser: 650 nm/100 mW (red) laser diode, 532 nm/30 mW (green) laser diode
- Input Voltage: 100 to 240 VAC, 50/60 Hz (auto-ranging)
- Weight: 9.2 lb (4.2 kg)
- Size: 13.1 x 13 x 9.4 in (335x 332 x 241 mm)

#### Laser light.

#### Avoid direct eye exposure.

Complies with FDA performance standards for laser products except for deviations pursuant to Laser Notice No. 50, dated June 24, 2007.



### Swarm 5 FX

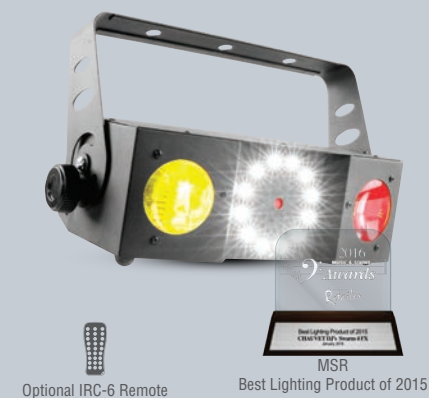
Swarm 5 FX is a 3-in-1 LED effect fixture that combines red and green lasers, white strobe effects, and multicolored rotating derby effects into one compact setup. Match the look of any event by creating customized light shows with separate color and program control. Quickly create a look using built-in automated and sound-activated programs, or master/slave and DMX mode. Create a synchronized light show and save time running cables and extension cords by power-linking multiple units. Fits best in the CHS-40 VIP Gear Bag.

- DMX Channels: 9
- Light Source:
  - Derby: 5 LEDs (1 red, 1 green, 1 blue, 1 white, 1 amber) 3 W (300 mA), 50,000 hours;
  - Strobe: 8 LEDs (white) 1 W (300 mA), 50,000 hours
  - Laser: 532 nm/50 mW (green) laser diode, 650 nm/100 mW (red) laser diode
- Input Voltage: 100 to 240 VAC, 50/60 Hz (auto-ranging)
- Weight: 9.8 lb (4.5 kg)
- Size: 8.6 x 11.7 x 12.2 in (225 x 298 x 310 mm)

#### Laser light.

#### Avoid direct eye exposure.

Complies with FDA performance standards for laser products except for deviations pursuant to Laser Notice No. 50, dated June 24, 2007.



### Swarm 4 FX

Swarm 4 FX combines three dynamic lighting effects in one rugged and compact housing. It includes quad-color (RGBA) dual moonflowers, a red/green laser and a white strobe. The dual moonflowers spin enough colorful beams to fill an entire dance floor with energy and excitement. Added impact is provided by thousands of razor sharp red and green beams produced by the laser. The bright output of the strobe ring, which features built-in motion effects, adds to the fun. Control options include sound activation, master/slave, DMX modes or the optional IRC-6 remote.

- DMX Channels: 2 or 12
- Light Source:
  - Moonflower: 2 LEDs (quad-color RGBA) 13 W (4.4 A), 50,000 hours
  - Strobe: 12 SMD LEDs (cool white) 1 W (300 mA), 50,000 hours
  - Laser: 532 nm/30 mW (green) laser diode, 650 nm/100 mW (red) laser diode
- Input Voltage: 100 to 240 VAC, 50/60 Hz (auto-ranging)
- Weight: 5.4 lb (2.5 kg)
- Size: 11.4 x 14.2 x 4.2 in (290 x 360 x 107 mm)

#### Laser light.

#### Avoid direct eye exposure.

Complies with FDA performance standards for laser products except for deviations pursuant to Laser Notice No. 50, dated June 24, 2007.







Optional IRC-6 Remote



Available in black or white

Optional IRC-6 Remote

Combine multiple units using the included X bracket



NEW



Optional IRC-6 Remote

EFFECTS

### SlimBEAM Quad

SlimBEAM Quad is a versatile fixture that is not only ideal for accenting walls and other surfaces, but also can be used to create unique beam effects. With no moving parts, it's ideal for venues where silent operation is essential. Multiple units can be linked in master/slave mode. Control options include automated and DMX modes. The optional CHAUVET DJ IRC-6 remote can be used for wireless control. Fits best in the CHS-40 VIP Gear Bag.

- DMX Channels: 4, 9 or 16
- Light Source: 3 LEDs (quad-color RGBA) 3 W (1.2 A), 50,000 hours
- Beam Angle: 15°
- Illuminance: 343 lux @ 2 m (per section)
- Input Voltage: 100 to 240 VAC, 50/60 Hz (auto-ranging)
- Weight: 5.2 lb (2.4 kg)
- Size: 10.8 x 3.2 x 8.3 in (273 x 80 x 212 mm)



### Rotosphere Q3

Rotosphere Q3 is an easy to use mirror ball simulator with high-power, quad-color LEDs. Three LED zones emit up to three different colors simultaneously and the slow speed of rotation creates the perfect atmosphere for slow dancing. Rotosphere Q3 is easily controllable with the optional IRC-6 remote and the digital display even allows you to set a color and rotation speed without any controller. Mount Rotosphere Q3 to truss with the included bracket or place it on a stand as a centerpiece. Fits best in the CHS-50 VIP Gear Bag.

- DMX Channels: 3, 9, or 19
- Light Source: 5 LEDs (quad-color RGBW) 7 W, (2.4 A), 50,000 hours
- Coverage Angle: 360°
- Input Voltage: 100 to 240 VAC, 50/60 Hz (auto-ranging)
- Weight: 8.6 lb (3.9 kg)
- Size: 11 x 13 x 17 in (266 x 319 x 419 mm)



### Derby X

Derby X features six individually controllable LED clusters that project multicolored beams. Additional features include automated and sound-activated programs, power-linking capabilities and blackout, static and strobe effects. Combine multiple X-series units using the included X bracket. Fits best in the CHS-40 VIP Gear Bag.

- DMX Channels: 8
- Light Source: 90 LEDs (30 red, 30 green, 30 blue) 0.25 W (20 mA), 100,000 hours
- Coverage Angle: 96°
- Input Voltage: 100 to 240 VAC, 50/60 Hz (auto-ranging)
- Weight: 4 lb (1.8 kg)
- Size: 11.9 x 15 x 7.4 in (302 x 382 x 187 mm)



### Line Dancer

Line Dancer is a compact LED effect light that projects strips of rotating multicolored light and creates mid-air effects that blanket an entire space with eye-catching patterns. Multiple zones and adjustable rotation speeds provide spectacular animated effects. The digital display allows you to set a color and rotation speed without any controller.



- DMX Channels: 3 or 6
- Light Source: 27 LEDs (tri-color RGB) 1.5 W, (0.6 A), 50,000 hours
- Coverage Angle: 116°
- Input Voltage: 100 to 240 VAC, 50/60 Hz (auto-ranging)
- Weight: 2.6 lb (1.2 kg)
- Size: 9.3 x 10.4 x 10 in (237 x 264 x 253 mm)







Optional IRC-6 Remote



Optional IRC-6 Remote

### Mini Kinta

Mini Kinta is fitted with 3 W LEDs to punch through nearly any ambient lighting or fog. Filling a room floor to ceiling with razor sharp beams, it delivers an output that surpasses those of much larger derby effects. DMX controllable, it also features exciting built-in programs. An optional IRC-6 remote is available for wireless control. Fits best in the CHS-30 VIP Gear Bag.

- DMX Channels: 4
- Light Source: 4 LEDs (1 red, 1 green, 1 blue, 1 white) 3 W (980 mA), 50,000 hours
- Input Voltage: 100 to 240 VAC, 50/60 Hz (auto-ranging)
- Weight: 3.4 lb (1.6 kg)
- Size: 7.5 x 9.1 x 7.25 in (191 x 241 x 184 mm)



### Kinta FX

Kinta FX combines an LED derby effect, laser and SMD strobe in one compact fixture. These effects can be coordinated to create a variety of exciting looks that feature multicolored derby beams, dynamic strobes and chases plus hundreds of sharp red and green laser beams. Control this versatile fixture easily via DMX, master/slave, optional IRC-6 remote or its digital display. Multiple units can be power linked to save time running cables and extension cords. Fits best in the CHS-30 VIP Gear Bag.

- DMX Channels: 2 or 9
- Light Source:
  - Derby: 4 LEDs (1 red, 1 green, 1 blue, 1 white) 7.5 W (2.4 A), 50,000 hours
  - Strobe: 16 SMD LEDs (white) 5 W (1.6 A), 50,000 hours
  - Laser: 650 nm/100 mW (red) laser diode, 532 nm/30 mW (green) laser diode
- Input Voltage: 100 to 240 VAC, 50/60 Hz (auto-ranging)
- Weight: 3.8 lb (1.7 kg)
- Size: 7.4 x 10.3 x 7.4 in (187 x 261 x 187 mm)



**Laser light.**  
**Avoid direct eye exposure.**  
 Complies with FDA performance standards for laser products except for deviations pursuant to Laser Notice No. 50, dated June 24, 2007.



NEW



### Mushroom

Mushroom is a classic plug-and-play effect light that generates hundreds of sharp, multi-colored beams. Built-in automated programs and sound activation modes mean no programming is needed. Mushroom's compact size and light weight make load-in and set up effortless. Fits best in the CHS-40 VIP Gear Bag.



- Light Source: 6 LEDs (2 red, 1 green, 1 blue, 1 amber, 1 white) 14 W, (3.6 A), 50,000 hours
- Coverage Angle: 102°
- Input Voltage: 100 to 240 VAC, 50/60 Hz (auto-ranging)
- Weight: 2.8 lbs (1.3 kg)
- Size: 9.4 x 7.3 x 7.3 in (238 x 185 x 185 mm)



### JAM Pack Gold

JAM Pack Gold is a winning package of four always-popular party effects that are ready to use right out of the box. Included are a derby effect, a laser, a fog machine with fluid, a UV wash/strobe combo light, a wireless IRC-6 remote and three external power supplies

- Light Source:
  - Derby: 3 LEDs (1 red, 1 green, 1 blue) 6 W (1.76 A), 50,000 hours
  - UV strobe: 9 LEDs (5 UV/4 white) UV 1.05 W/white 0.60 W (UV 0.31 A/white 0.19 A), 50,000 hours
  - Laser: 650 nm/100 mW (red) laser diode, 532 nm/30 mW (green) laser diode
- Tank Capacity (fogger): 0.2 gal (0.6 l)



**Laser light.**  
**Avoid direct eye exposure.**  
**Class 3R laser product.**  
 Complies with FDA performance standards for laser products except for deviations pursuant to Laser Notice No. 50, dated June 24, 2007.







### DJ Bank

DJ Bank is a staple of garage bands and entry-level mobile DJs. This compact bank-style fixture features four pods of LEDs for dynamic chase effects that quickly add color and energy. The “all-on” option activates all four pods at once to wash the room. Fits best in the CHS-SP4 VIP Gear Bag.

- Light Source: 140 LEDs (35 red, 35 green, 35 blue, 35 amber) 0.25 W (20 mA), 100,000 hours
- Beam Angle: 14°
- Illuminance: 541 lux @ 2 m
- Input Voltage: 120 VAC, 60 Hz or 230 V, 50 Hz
- Weight: 3.1 lb (1.4 kg)
- Size: 15.8 x 4.5 x 5.5 in (401 x 114 x 140 mm)



NEW



### Duo Moon

Duo Moon is a plug-and-play LED effect light that projects a fun moonflower and strobe effect. It includes built-in automated and sound-activated programs. Duo Moon is compact and ready to use right out of the box.



- Light Source: 66 LEDs (24 red, 18 green, 12 blue, 12 white) 1 W, 2 mA, 50,000 hours
- Coverage Angle: 52°
- Input Voltage: 100 to 240 VAC, 50/60 Hz (auto-ranging)
- Weight: 2.2 lb (1 kg)
- Size: 7.3 x 7.5 x 6.7 in (185 x 190 x 170 mm)



### LX-5

LX-5 uses 56 LEDs to project sharp and colorful moonflower effects. Lightweight and compact, it runs on automated mode or sound-activation, which makes it ideal for mobile functions where fast set up and easy operations are key. Multiple units can be daisy chained to cover larger venues. Fits best in the CHS-40 VIP Gear Bag.

- Light Source: 56 LEDs (16 red, 16 blue, 24 green) 0.25 W (20 mA), 100,000 hours
- Coverage Angle: 40°
- Input Voltage: 100 to 240 VAC, 50/60 Hz (auto-ranging)
- Weight: 2.2 lb (1 kg)
- Size: 8.6 x 5.1 x 5.7 in (219 x 130 x 144 mm)



### BOB LED

BOB LED is the hottest simulated flame effect light on the market, but generates no heat. This LED powered, duty-cycle free fixture perfectly simulates a flickering cauldron. BOB LED can either stand on included legs or hang from an included chain.

- Light Source: 66 LEDs (54 orange, 12 blue) 0.25 W (20 mA), 100,000 hours
- Input Voltage: 120 VAC, 60 Hz or 230 VAC, 50 Hz
- Weight (with legs): 5.1 lb (2.3 kg)
- Size (with legs): 17.5 x 17.5 x 30.5 in (455 x 455 x 775 mm)
- Weight (with chains): 4.8 lb (2.2 kg)
- Size (with chains): 11 x 11 x 29 in (280 x 280 x 737 mm)



# Hex-LED Technology

## The trillion color difference

A CHAUVET DJ Hex-LED fixture is much more than a blacklight. It creates not only intense UV light but also superb colors and white uplighting washes.



Create and mix unique UV colors



COLORband H9 USB  
(See page 29)



Freedom Flex H4 IP  
(See page 13)



Freedom Par Hex-4  
(See page 14)



SlimPAR H6 USB  
(See page 31)



SlimPAR Pro H USB  
(See page 23)



EVE P-150 UV  
(See page 20)







Compatible with IRC-6 Remote and D-Fi USB Transceiver

### COREpar UV USB

COREpar UV USB is a compact UV wash with COB (chip-on-board) LED technology, it offers D-Fi USB compatibility for wireless master/slave or DMX control. It includes a separate magnetic lens to provide the flexibility to go from an ultra-wide wash to a narrow beam in seconds. High frequency LED dimming achieves smooth LED fades and ensures a flicker-free performance in video applications. Multiple control options include DMX, master/slave and sound activation modes as well as wireless control thanks to D-Fi USB compatibility.

- DMX Channels: 1 or 5
- Light Source: 1 COB LED (UV) 70 W (1.5 A), 50,000 hours
- Coverage Angle: 100° without Fresnel lens, 50° with Fresnel lens
- Input Voltage: 100 to 240 VAC, 50/60 Hz (auto-ranging)
- Weight: 4.6 lb (2.1 kg)
- Size: 5.5 x 7.9 x 10 in (139 x 200 x 253 mm)



NEW



Optional D-Fi USB Transceiver



### EVE P-150 UV

EVE P-150 UV is a brawny blacklight cannon fitted with 40 UV LEDs emitting 150 watts of blacklight power. The unit is designed without a fan and its silent operation combined with its flicker-free output make it ideal for video use. EVE P-150 UV is D-Fi USB compatible giving users the option to control the light wirelessly in master/slave mode or wireless DMX control. 25° and 45° magnetic lenses to adjust the beam are included along with a gel frame holder and accessory slot for optional barn doors. **For full features (See page 20)**

- DMX Channels: 1 or 5
- Light Source: 40 LEDs (UV) 150 W total, (2 A), 50,000 hours
- Coverage Angle: (narrow lens): 25° (no lens): 35° (wide lens): 45°
- Input Voltage: 100 to 240 VAC, 50/60 Hz (auto-ranging)
- Weight: 7.6 lbs (3.5 kg)
- Size: 8.6 x 9.65 x 12 in (220 x 245 x 305 mm)

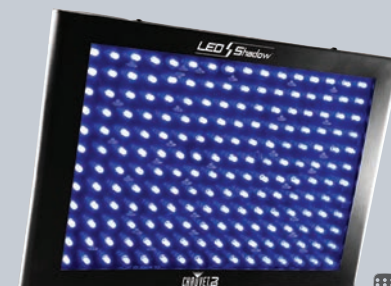


Optional IRC-6 Remote

### SlimSTRIP UV-18

SlimSTRIP UV-18 is an attractive and powerful UV strip light. It casts a rich UV light with wide coverage and can be controlled wirelessly with the optional CHAUVET DJ IRC-6 remote. Use the SlimSTRIP UV-18 instead of a traditional fluorescent for a safe, eco-friendly, bright and beautiful UV light. SlimSTRIP UV-18 fits nicely in the CHS-60 VIP Gear Bag for safe transporting.

- DMX Channels: 3
- Light Source: 18 LEDs (UV) 3 W (700 mA), 50,000 hours
- Coverage Angle: 160°
- Input Voltage: 100 to 240 VAC, 50/60 Hz (auto-ranging)
- Weight: 5.2 lb (2.4 kg)
- Size: 41.9 x 2.3 x 5 in (1,065 x 60 x 126 mm)



Optional IRC-6 Remote

### LED Shadow

LED Shadow is a panel wash that delivers stunning blacklight effects. Built-in auto programs trigger flash and strobe in patterns.

- DMX Channels: 3
- Light Source: 192 LEDs (UV) 0.25 W (20 mA), 100,000 hours
- Coverage Angle: 28°
- Input Voltage: 100 to 240 VAC, 50/60 Hz (auto-ranging)
- Weight: 4.9 lb (2.2 kg)
- Size: 14 x 9.8 x 6.5 in (356 x 248 x 165 mm)



BLACKLIGHTS

blacklight



**NEW**

Included expansion bracket allows quick attachment of a second unit



Optional IRC-6 Remote



Compatible with IRC-6 Remote and D-Fi USB Transceiver



### Shocker 2 Blinder

Shocker 2 is a punchy dual zone blinder with warm white 85-watt COB LEDs. Perfect for theatrical productions, concerts, dance floors and more, Shocker 2 has an included expansion bracket that allows quick attachment of a second unit to create a 4-head blinder. Adjustable pulse width modulation (PWM) control is on board to eliminate flicker on camera. Shocker 2 has PowerCON®-compatible power input/output connections for power linking and flexible control options with onboard 3- and 5-pin DMX connectors.

- DMX Channels: 1, 2, 4, 7 or 8
- Light Source: 2 COB LEDs (warm white) 85 W, (3.6 A), 50,000 hours
- Beam Angle: 51°
- Color Temperature: 3200 K
- Input Voltage: 100 to 240 VAC, 50/60 Hz (auto-ranging)
- Weight: 10.4 lbs (4.7 kg)
- Size: 14.75 x 4.6 x 6 in (375 x 116 x 153 mm)

### Shocker 90

Shocker 90 is a lightweight and compact (SMD) LED strobe in a rugged, die-cast housing that packs a brilliant white punch. It has four zones of control for a range of effects and patterns. Its automated programs work in master/slave mode to easily create an energetic light show. Shocker 90 is controlled via the control panel or with the optional IRC-6 wireless remote. Fits best in the CHS-25 VIP Gear Bag.

- DMX Channels: 2, 5 or 8
- Light Source: 90 SMD LEDs (cool white) 0.5 W (644 mA), 50,000 hours
- Beam Angle: 65°
- Illuminance: 250 lux @ 2 m
- Input Voltage: 100 to 240 VAC, 50/60 Hz (auto-ranging)
- Weight: 3.2 lb (1.5 kg)
- Size: 7.6 x 6.7 x 3.3 in (194 x 170 x 84 mm)



### Shocker Panel 180 USB

Shocker Panel 180 USB is a high-impact LED strobe light with four zones of control. Eye-popping effects and chases can be triggered via master/slave, DMX mode or the optional IRC-6 remote. It also offers D-Fi USB compatibility for wireless master/slave or DMX connectivity. It can be power linked in multiples to save time running cables and extension cords. Fits best in the CHS-25 VIP Gear Bag.

- DMX Channels: 2, 5 or 8
- Light Source: 180 SMD LEDs (cool white) 0.5 W (644 mA), 50,000 hours
- Beam Angle: 65°
- Illuminance: 257 lux @ 2 m
- Input Voltage: 100 to 240 VAC, 50/60 Hz (auto-ranging)
- Weight: 3.4 lb (1.6 kg)
- Size: 8.8 x 2.25 x 7.8 in (223 x 57 x 198 mm)



### Mini Strobe LED

Mini Strobe LED is an ultra-compact and lightweight strobe light, ready for use right out of the box. Simply plug in the unit and adjust the flash rate for the desired effect. LED power means it will run all night and stay cool to the touch. Fits best in the CHS-40 VIP Gear Bag.

- Light Source: 21 LEDs (cool white) 0.25 W (20 mA), 100,000 hours
- Input Voltage: 120 VAC, 60 Hz or 230 VAC, 50 Hz
- Weight: 0.5 lb (0.2 kg)
- Size: 5.1 x 4 x 3.7 in (130 x 102 x 95 mm)







Wireless Remote  
Included



Wireless Remote  
Included



Wireless Remote  
Included

### Geyser P7

Geyser P7 is a dynamic pyrotechnic-like effect that creates thrilling bursts of fog lit with seven 9-watt penta-color (RGBA+UV) LEDs for endless color capabilities. Two LED zones can create two-tone bursts of fog without the use of any toxic chemicals, fire or heavy CO2 canisters. Control the unit from the built-in DMX or the included Geyser wireless remote and assign different colors to each of the remote's buttons. The onboard digital display allows for easy configuration even in fast-paced or dark environments.

### Geyser P5

Geyser P5 produces safe and dynamic, color-filled bursts of fog without the use of any toxic chemicals, fire or heavy CO2 canisters. Five penta-color (RGBA+UV) LEDs create beautiful color mixing. Assign different colors to each of the included remote's buttons and the manual button. Control the unit from built-in DMX, included Geyser wireless remote, or manual control. The digital display allows easy configuration even in dark, fast paced environments and Geyser P5's small form factor allows the unit to go anywhere.

- DMX Channels: 10
- Output: 13,500 cfm
- Light Source: 5 LEDs (Penta-color RGBA+UV) 7 W (2.6 A), 50,000 hours
- Tank Capacity: 0.7 gal (2.5 l)
- Input Voltage: 120 VAC, 60 Hz or 230 VAC, 50 Hz
- Weight: 13.4 lb (6.1 kg)
- Size: 14.7 x 13.5 x 7.5 in (375 x 342 x 190 mm)



### Geyser T6

Geyser T6 brings a burst of lighting energy to your events with a pyrotechnic-like effect. Geyser T6 illuminates bursts of water-based fog with 6 tri-color (RGB) LEDs. Its advanced fluid sensor with automatic shut off protects the pump from overheating. Compact and lightweight, Geyser T6 is perfect for mobile applications.

- Output: 8,000 cfm
- Light Source: 6 LEDs (tri-color RGB) 3 W (332 mA), 50,000 hours
- Tank Capacity: 0.28 gal (1.07 l)
- Input Voltage: 120 VAC, 60 Hz or 230 VAC, 50 Hz
- Weight: 7 lb (3.2 kg)
- Size: 12 x 8.25 x 7 in (304.8 x 209.55 x 177.8 mm)



- DMX Channels: 15
- Output: 17,000 cfm
- Light Source: 7 LEDs (penta-color RGBA+UV) 9 W (3 A), 50,000 hours
- Tank Capacity: 0.7 gal (2.5 l)
- Input Voltage: 120 VAC, 60 Hz or 230 VAC, 50 Hz
- Weight: 18.16 lb (8.5 kg)
- Size: 15.7 x 14.2 x 8.2 in (400 x 362 x 210 mm)





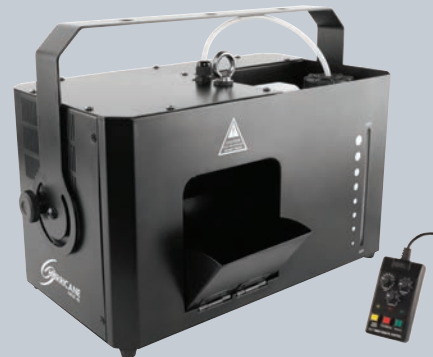
Non-toxic, non-flammable paper confetti refills



Wireless Remote Included



FC-T Included



FC-T Included



FC-T Included

## Funfetti Shot

Funfetti Shot is a wirelessly controlled professional confetti launcher. With easy setup by one person, it sends powerful blasts of confetti flying for distances up to 30' (9 m) and covering an area as large as 540 square feet (50 m<sup>2</sup>). Each powerful burst of confetti lasts as long as 25 seconds. The launcher can be controlled in manual, wireless and DMX modes. For added versatility, it works with a variety of confetti types including UV. A double-bracketed yoke allows easy floor mounting or hanging. Safe and convenient, Funfetti Shot does not rely on compressed air or CO<sub>2</sub>. For easy transport, use the CHS-50 VIP Gear Bag.

- DMX Channels: 1
- Maximum Confetti Capacity (FRC and FRU Confetti): 0.5 lb (0.25 kg)
- Maximum Continuous Launch Duration: 25 seconds
- Maximum Throw Distance: 30 ft (9 m)
- Average Coverage Area: 540 ft<sup>2</sup> (50 m<sup>2</sup>)
- Input Voltage: 120 VAC, 60 Hz or 230 VAC, 50 Hz
- Weight: 13.6 lb (6.2 kg)
- Size: 11.2 x 9 x 21.8 in (284 x 228 x 553 mm)



## Snow Machine

SM-250 is a high output snow machine with user-friendly volume adjustment included via the included wired timer remote, built-in DMX and digital display. SM-250 also features a convenient Hi/Low blower switch for coverage of near and far distances and its non-toxic water based snow fluid (sold separately) is safe for all environments.

- DMX Channels: 1
- Tank Capacity: 1.3 gal (5 l)
- Fluid Consumption: 580 ml/min
- Input Voltage: 120 VAC, 60 Hz
- Weight: 20.2 lb (9.2 kg)
- Size: 17.6 x 13.5 x 13.9 in (449 x 344 x 355 mm)



## Hurricane Haze 4D

Hurricane Haze 4D is a low profile hazer with an adjustable scoop to direct the haze and a discreet fan. It can be controlled with the included wired timer remote and built-in DMX.

- DMX Channels: 2
- Output: 4,300 cfm
- Tank Capacity: 0.9 gal (3.75 l)
- Input Voltage: 120 VAC, 60 Hz or 230 VAC, 50 Hz
- Weight: 13.2 lb (6 kg)
- Size: 11 x 15.5 x 9.6 in (277 x 396 x 245 mm)



## Hurricane Haze 2D

Hurricane Haze 2D is a water-based haze machine with continuous output and a digital display to set DMX and standalone functions. It features a low-fluid indicator, adjustable blower output speeds, and a nozzle to direct haze where you need it. The included wired timer remote is conveniently stored in the fixture.

- DMX Channels: 2
- Output: 1,200 cfm
- Tank Capacity: 0.7 gal (2.5 l)
- Input Voltage: 120 VAC, 60 Hz or 230 V, 50 Hz
- Weight: 18.7 lb (8.5 kg)
- Size: 11.2 x 10.5 x 13.7 in (285 x 267 x 350 mm)



## Hurricane Haze 1DX

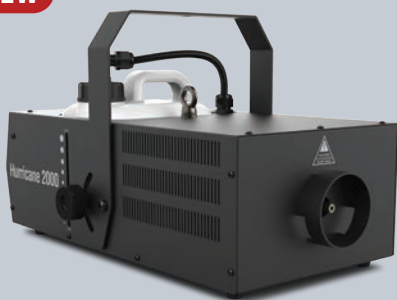
Hurricane Haze 1DX is a compact and lightweight hazer that creates a thin atmosphere to enhance any light show. It features a silent running fan that allows the unit to be used in any environment. Its built-in display lets you quickly and easily set DMX functions and haze standalone settings. Hurricane Haze 1DX has a small footprint allowing the machine to be placed in any location.

- DMX Channels: 1
- Output: 800 cfm
- Tank Capacity: 0.4 gal (1.5 l)
- Input Voltage: 120 VAC, 60 Hz or 230 VAC, 50 Hz
- Weight: 7.2 lb (3.3 kg)
- Size: 11 x 6 x 9 in (278 x 150 x 223 mm)





NEW



FC-T Included

180° Adjustment



FC-T Included



FC-T Included

ATMOSPHERICS

## Hurricane 2000

Hurricane 2000 is a professional, high volume fog machine that produces a thick plume on demand. It features a PowerCON®-compatible power input connection and 3- and 5-pin DMX input/output connections for quick setup options. Hurricane 2000 has Always-ready technology that provides continuous output and its built-in timer provides hands-free, automated operation.

## Hurricane 1800 Flex

- DMX Channels: 1
- Tank Capacity: 1.3 gal (5 l)
- Input Voltage: 120 VAC, 60 Hz or 230 V, 50 Hz
- Output: 25,000 cfm
- Weight: 27.6 lb (12.5 kg)
- Size: 22.2 x 13.4 x 15 in (563 x 340 x 380 mm)



## Hurricane 1600

- DMX Channels: 1
- Tank Capacity: 0.63 gal (2.4 l)
- Input Voltage: 120 VAC, 60 Hz or 230 V, 50 Hz
- Output: 25,000 cfm
- Weight: 13.2 lb (6 kg)
- Size: 13.7 x 12.3 x 10 in (348 x 312 x 253 mm)



## Hurricane 1302

- Tank Capacity: 0.9 gal (3.3 l)
- Input Voltage: 120 VAC, 60 Hz or 230 VAC, 50 Hz
- Output: 20,000 cfm
- Weight: 15.4lb (6.9 kg)
- Size: 16.5 x 12.5 x 11.8 in (420 x 320 x 302 mm)



FC-T Included



Wired and Wireless Remote Included



Remote Included

## Hurricane 1200

- Tank Capacity: 0.26 gal (1.0 l)
- Input Voltage: 120 VAC, 60 Hz or 230 VAC, 50 Hz
- Output: 18,000 cfm
- Weight: 6.4 lb (2.9 kg)
- Size: 11.3 x 9.3 x 8.2 in (286 x 235 x 209 mm)

## Hurricane 1000

- Tank Capacity: 0.26 gal (1.0 l)
- Input Voltage: 120 VAC, 60 Hz or 230 V, 50 Hz
- Output: 10,000 cfm
- Weight: 5.8 lb (2.7 kg)
- Size: 11.9 x 8.9 x 8.2 in (301 x 225 x 208 mm)

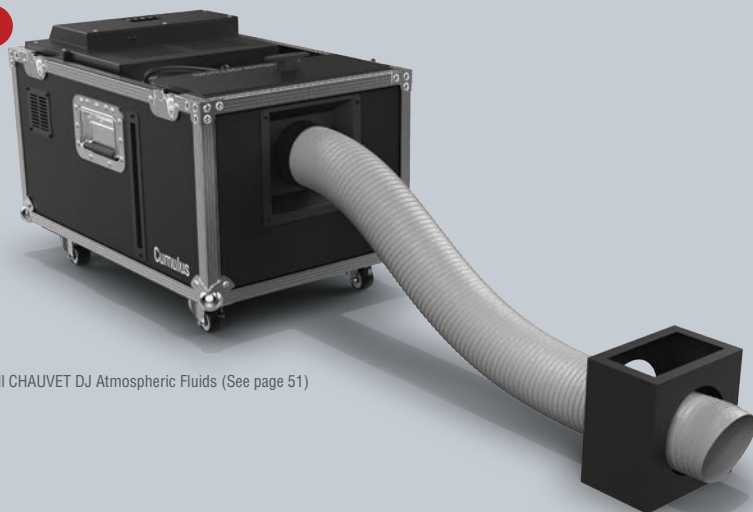
## Hurricane 700

- Tank Capacity: 0.2 gal (0.6 l)
- Input Voltage: 120 VAC, 60 Hz or 230 V, 50 Hz
- Output: 1,500 cfm
- Weight: 4 lb (1.8 kg)
- Size: 8.5 x 7.1 x 4.9 in (215 x 180 x 124 mm)

- DMX Channels: 1
- Tank Capacity: 1 gal (3 l)
- Input Voltage: 120 VAC, 60 Hz or 230 VAC, 50 Hz
- Output: 25,000 cfm
- Weight: 13.6 lb (6.2 kg)
- Size: 19 x 11.6 x 9.3 in (487 x 297 x 236 mm)



NEW



Compatible with all CHAUVET DJ Atmospheric Fluids (See page 51)

### Cumulus

Cumulus is a professional low-lying fog machine that creates thick clouds that hug the floor without the need for dry ice. The onboard ultrasonic agitator converts distilled water into a thin mist. The unit's fast heat up time allows for quick operation and fog on demand. It's rugged flight case makes transportation a breeze and locking casters prevent accidental rollaways. Cumulus can be controlled with the on board digital display or DMX.



- DMX Channels: 2
- Tank Capacity: Fog Fluid Tank Capacity: .9 gal (3.25 l) Water Tank Capacity: 2 gal (7.6 l)
- Heat-up Time 3 min
- Input Voltage: 120 VAC, 60 Hz or 230 VAC, 50 Hz
- Fog Fluid Consumption: 80 ml/min
- Water Consumption: 930 ml/min
- Compatible Fluids: HFG
- Weight: 58.8 lb (26.7 kg)
- Size: 25 x 16 x 18 in (625 x 409 x 453 mm)



### Nimbus

Nimbus is a professional dry ice machine that delivers thick, low-lying clouds of fog that hugs the floor and dissipates without rising. It provides an outstanding return on investment to rental houses and event producers, and is ideally suited for a wedding party's first dance. This powerful machine heats enough water to create fog from 10 pounds (4.5 kg) of dry ice to provide six minutes of run time. Output and flow are easily controlled, due to an adjustable multi-level control arm. Dual heaters ensure faster heat-up and recycle times. A low water sensor increases safety.

- Tank Capacity: 4.5 gal (17 l)
- Heat-up Time (single element): 50 min
- Heat-up Time (dual element): 30 min
- Reheat time (single element): 30 min
- Reheat Time (dual element): 15 min
- Average Runtime: 6 min
- Input Voltage: 120 VAC, 60 Hz or 230 VAC, 50 Hz
- Dry Ice Capacity: 10 lb (4.5 kg)
- Weight (full): 75 lb (34 kg)
- Size: 20 x 18 x 19 in (513 x 465 x 470 mm)



### Nimbus Cart

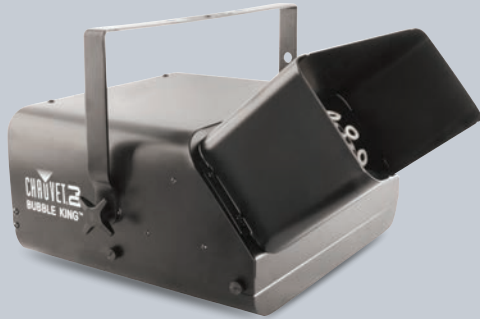
Easily transport your Nimbus dry ice machine to and from the car and around the dance floor.

- Load Capacity: 75 lb (34 kg)
- Weight: 5.8 lb (2.7 kg)
- Dimensions: 16.7 x 14.9 x 5.5 in (426 x 379 x 132 mm)



## Atmospheric Remotes

## Atmospheric Fluids



### Bubble King

Bubble King is the biggest name in bubble effects, featuring three double wands, a manual bubble button, and extremely high output. This is the perfect machine when you need bubbles for a large area.

- Tank Capacity: 56 oz (1.7 l)
- Input Voltage: 120 VAC, 60 Hz or 230 VAC, 50 Hz
- Weight: 13.2 lb (5.9 kg)
- Size: 19 x 15 x 12 in (483 x 381 x 305 mm)



### Wired Timer Remote (FC-T)

Compatible with Hurricane 1800 Flex, Hurricane 1600, Hurricane 1302, Hurricane 1200, SM-250



### Wireless Motion Sensor (WMS)

Compatible with Geyser P6, Geyser P4, Geyser P7, Funfetti Shot, Hurricane 1800 Flex, Hurricane 1600, Hurricane 1302, Hurricane 1200, Hurricane 1000, Hurricane 901, SM-250



### Bubble Machine

Bubble Machine is designed for large areas where portability is a top priority. It is lightweight, thanks to an all plastic construction that also prevents rust, and conveniently features an easily removable fluid tank.

- Tank Capacity: 24 oz (0.7 l)
- Input Voltage: 120 VAC, 60 Hz or 230 VAC, 50 Hz
- Weight: 6.8 lb (3.1 kg)
- Size: 12.5 x 7 x 6.5 in (318 x 178 x 165 mm)



### Wireless Remote (FC-W)

Compatible with Hurricane 1800 Flex, Hurricane 1600, Hurricane 1302, Hurricane 1200, Hurricane 1000, Hurricane 901, Funfetti Shot, SM-250



### FJQ

High Performance Fog Fluid



### PHF

Premium Haze Fluid



### FCQ

Fog Machine Cleaning Fluid



### HDF

High Density Fog Fluid



### FJU

High Performance Fog Fluid



### SJU

Snow Fluid



### HFG

High Performance Haze Fluid



### QDF

Quick Dissipating Fluid



### BJU

High Performance Bubble Fluid



# FlareCON

Light Smarter



## FlareCON

FlareCON app is available for both Android and iOS® in both phone and tablet versions. The FlareCON Air can also connect directly to a DMX controller to send wireless signals out to an unlimited number of D-Fi lights or receivers.



## FlareCON Air

FlareCON Air is a wireless transceiver that turns a smartphone or mobile tablet into a DMX lighting controller. It takes Wi-Fi signals from any mobile device and turns them into D-Fi signals for any D-Fi-ready light or hub. The FlareCON app works exclusively with FlareCON Air. FlareCON Air can also connect directly to a DMX controller and then send D-Fi out to D-Fi compatible products or hubs. FlareCON Air is fully FCC and RTTE compliant.

- DMX Channels: 512
- Operating Frequency: 2.412 - 2.484 GHz
- Antenna Connection: RP-SMA
- Max. Unobstructed Distance: 600 ft (183 m)
- Input Voltage: 9 VDC, 500 mA (external power supply: 100 to 240 VAC, 50/60 Hz)
- Weight: 1.2 lb (0.6 kg)
- Size: 5.59 x 3.58 x 1.81 in (142 x 91 x 46 mm)



## SoundSwitch



## SoundSwitch

SoundSwitch is a cutting edge hardware/software bundle that lets users create DMX lighting displays that are played back in time with audio files when played back live in Serato DJ or Virtual DJ. It allows DJs and lighting designers the ability to sync lighting visuals with live audio seamlessly. **For full Specs. (page 56)**







### ShowXpress

ShowXpress is a free software program that turns almost any computer into a lighting console. It allows direct control over simple PAR cans to the most complex moving lights. All you need is a computer (PC or Mac), a ShowXpress interface and ShowXpress software. The software is now available as an app for your smartphone. You can take ShowXpress on the road and go mobile! Pre-configured for RGB, RGBA, RGBW, and RGBWA fixtures, Pixels makes the creation of show-stopping effects fast and easy, and is included free as a part of your ShowXpress software. For more information go to:

<https://www.chauvetdj.com/showxpress/>



Compatible



Optional Xpress Remote



Compatible

### Xpress 512 Plus

Xpress 512 Plus brings you the same capabilities of the Xpress 512, plus an external triggering that is available via a mini-DIN connection or an optional infrared remote. An internal calendar can also trigger playback at a specific time without a computer.

- Input Voltage: 5V USB or 9-12 VDC, 300 mA external power supply (not included)
- Weight: 0.6 lb (0.3 kg)
- Size: 4.7 x 3.5 x 1.8 in (119 x 89 x 47 mm)

### Xpress 512

Xpress 512 is a self-contained DMX-512 interface for the ShowXpress software. The interface is capable of transmitting one universe of DMX and works on both Windows and Mac OS X platforms. Multiple units can be connected for multiple universes of control. Users can store and playback one show without a computer or unlimited shows with a computer.

- Input Voltage: 5V USB
- Weight: 0.5 lb (0.2 kg)
- Size: 4.3 x 3.2 x 1.5 in (108 x 80 x 37 mm)

### Xpress 100

Xpress 100 provides a USB to DMX interface for up to 100 DMX channels. It allows for an unlimited number of shows when connected to a computer.

- Input Voltage: 5V USB
- Weight: 0.2 lb (0.1 kg)
- Length: 3.5 ft (1 m)



Compatible



# D-Fi USB\*

The world's first and only D-Fi USB transceiver

- Operating Frequency: 2.412 to 2.484 GHz
- Max. Unobstructed Distance: 165 ft (50 m)
- Weight: 1.1 oz. (31.2 g)
- Size: 3 x 0.9 x 0.5 in (78 x 25 x 13 mm)

\*Patent Pending



CHAUVET DJ has developed a series of fixtures that include a standard USB connection. You can now wirelessly connect to all of them using the new D-Fi USB transceiver, which eliminates the need for any DMX cables. The USB transceiver is powered directly from the fixture. Control your USB fixtures using any of our wireless controllers, or from your smartphone with the D-Fi Hub and FlareCON.

NEW



EVE P-150 UV (page 20)

NEW



EVE P-140 VW (page 20)

NEW



EVE P-130 RGB (page 20)

## D-Fi USB Compatible Fixtures



4BAR LT USB (page 36)



4BAR Tri USB (page 36)



4BAR USB (page 36)



4BAR Flex T USB (page 36)



COLORband H9 USB (page 29)



COLORband PiX USB (page 29)



COLORband T3 USB (page 25)



COLORband PiX-M USB (page 29)





SlimPAR Q12 USB (page 32)



Gobo Zoom USB (page 27)



COREpar 40 USB (page 28)



SlimPAR H6 USB (page 31)



SlimPAR Q6 USB (page 31)



SlimPAR Pro QZ12 USB (page 23)



EVE E-100Z (page 19)



SlimPAR Pro W USB (page 23)



SlimPAR Pro Q USB (page 23)



SlimPAR T12 USB (page 32)



Shocker Panel 180 USB (page 46)



COREpar UV USB (page 45)



COREpar 80 USB (page 28)



EZpar T6 USB (page 26)



SlimPAR QUV 12 USB (page 31)



EVE E-50Z (page 19)



SlimBANK T18 USB (page 31)



SlimPAR Pro H USB (page 23)



SlimPAR T6 USB (page 32)



Abyss USB (page 39)





### SoundSwitch

SoundSwitch is a powerful tool that allows you to create customized lighting effects and cues along side and in time with music files. It has been designed with timeline editing tools familiar to anyone with experience using audio or graphic design software providing a user experience that is both functional and familiar. SoundSwitch gives DJs the tools to create their own lighting displays and the connection to play these back without compromising the freestyle nature of their live performance. It puts live control in the DJs hands and enables them to play any song, in any order, while their lighting remains in sync.

- DMX Connectors: 3-pin XLR
- Input Voltage: 5 VDC, USB
- Weight: 0.9 lb (0.4 kg)
- Size: 5 x 3.1 x 1.5 in (128 x 79 x 38 mm)
- Approvals: CE, FCC



### DMX-AN

DMX-AN is a converter that functions as an Art-Net to DMX or DMX to Art-Net interface. It features a multi-purpose Art-Net/sACN node that converts one Ethernet cable to two DMX universes. Its built-in web-based GUI means no universe/subnet setup and its durable Neutrik® etherCON® in/through port ensures reliability. DMX-AN supports power over Ethernet (POE) or an external power supply and both outputs can be set to either Art-Net or sACN.

- DMX Channels: 1024
- DMX Connectors: 3-pin XLR
- Control Protocol: Art-Net, DMX, sACN
- Input Voltage (DC): 9 VDC, 500 mA (external power supply: 100 to 240 VAC, 50/60 Hz)
- Input Voltage (POE): 48V 0.4 A
- Weight: 0.4 lb (0.2 kg)
- Size: 4.7 x 2.5 x 1.5 in (120 x 64 x 39 mm)



### DMX-RT

DMX-RT is a rugged and compact DMX recording device with triggerable playback. Copy, backup and transfer show files with a built-in micro SD card slot. The unit comes with a mounting bracket for convenient mounting options. The digital display is easy to navigate and lets you easily trigger scenes.

- Programmable Scenes: 999
- Memory Card: 8GB, 32GB (max.) Micro SD
- Memory Card Format: FAT32
- DMX Connectors: 3-pin XLR
- Input Voltage: 12 VDC, 1 A (external power supply: 100 to 240 VAC, 50/60 Hz)
- Weight: 0.4 lb (0.2 kg)
- Size: 3 x 2.9 x 1.7 in (77 x 73 x 43 mm)



### D-Fi Hub

D-Fi Hub is a wireless transceiver that converts D-Fi to DMX, or DMX to D-Fi. The D-Fi Hub wirelessly synchronizes an unlimited number of D-Fi-ready lights and products. It turns any DMX controller into a wireless D-Fi controller, or if you already have a CHAUVET DJ D-Fi controller, save yourself the trouble of a long DMX run by placing the D-Fi Hub up in your rig. D-Fi Hub is small and lightweight and has many mounting options.

- Input Voltage: 9 VDC, 500 mA (external power supply: 100 to 240 VAC, 50/60 Hz)
- Operating Frequency: 2.412 to 2.484 GHz
- Weight: 1.2 lb (0.6 kg)
- Size: 5.59 x 3.58 x 1.81 in (142 x 91 x 46 mm)



### IRC-6

IRC-6 is an easy-to-use infrared remote control (IRC) for all CHAUVET DJ IRC-enabled lighting fixtures. It provides instant access to pre-programmed scenes, color mixing options, and on-the-fly speed adjustments. This compact and lightweight remote has an approximate range of 30 feet (9 m). IRC-6 compatible fixtures also include the EZ and Freedom series fixtures and many more!

- Max. Unobstructed Distance: 15 ft (4.6 m)
- Input Voltage: 3 VDC lithium battery (CR2025)
- Weight: 0.7 oz (20 g)
- Size: 3.9 x 1.8 x 0.3 in (100 x 47 x 7 mm)



### Obey 40 D-Fi 2.4

Obey 40 D-Fi 2.4 is a small, but full-featured lighting controller with a built-in D-Fi transmitter so you can build a rig without long DMX cable runs! It works with any D-Fi compatible product and controls up to 12 different types of lights. It stores scenes and chases for playback and operates lights "on the fly". The stored scenes and chases are triggered by sound, or manually adjusted, to get just the right speed and fade time for your look. Obey 40 D-Fi 2.4 is MIDI compatible and has dedicated fog and strobe controls.

- DMX Channels: 192
- Input Voltage: 9 VDC, 500 mA (external power supply: 100 to 240 VAC, 50/60 Hz)
- Operating Frequency: 2.433 to 2.48 GHz
- Weight: 5.2 lb (2.4 kg)
- Size: 19 x 6.7 x 3.5 in (483 x 171 x 89 mm)





### Obey 70

Obey 70 bridges the gap between smaller rack mount controllers and massive control desks. Fourteen reversible faders and an assignable joystick allow for easy programming of up to twelve 32-channel fixtures. Obey 70 can store up to six sets of chases containing 240 scenes on 384 total channels of control. It also features fog and strobe control, as well as MIDI compatibility.

- DMX Channels: 384
- Input Voltage: 9 VDC, 500 mA (external power supply: 100 to 240 VAC, 50/60 Hz)
- Weight: 7.3 lb (3.3 kg)
- Size: 19 x 7 x 2.8 in (483 x 178 x 71 mm)



### Obey 10

Obey 10 is a compact controller ready to handle the complexities of today's lighting fixtures. Capable of controlling up to eight 16-channel fixtures, Obey 10 can store six sets of chases containing up to 999 scenes each.

- DMX Channels: 128
- Input Voltage: 9 VDC, 500 mA (external power supply: 100 to 240 VAC, 50/60 Hz)
- Weight: 3.9 lb (1.8 kg)
- Size: 19 x 3.5 x 3.5 in (483 x 89 x 89 mm)



### Obey 6

Obey 6 is a compact DMX controller capable of controlling up to six 6-channel fixtures, perfect for hex-LED (RGBAW+UV) fixtures. It allows you to control effects by simultaneously operating each fixture in different playback modes, with variable fade times. Playback options include manual RGBAW+UV, automated and sound-activated mode. Increase control with adjustable audio sensitivity, strobe and blackout effects.

- DMX Channels: 36
- Input Voltage: 9 VDC, 500 mA (external power supply: 100 to 240 VAC, 50/60 Hz)
- Weight: 3.8 lb (1.8 kg)
- Size: 15.5 x 5.5 x 1.9 in (393 x 140 x 47 mm)



### Obey 40

Obey 40 controls up to twelve 16-channel fixtures. Obey 40 has 30 banks on eight scenes, or up to 240 scenes. It also offers fog and strobe control and MIDI compatibility.

- DMX Channels: 192
- Input Voltage: 9 VDC, 500 mA (external power supply: 100 to 240 VAC, 50/60 Hz)
- Weight: 5.7 lb (2.6 kg)
- Size: 19 x 3.5 x 6.7 in (483 x 89 x 171 mm)



### Obey 4

Obey 4 is a compact DMX controller for LED wash lights with a 3- or 4-channel DMX mode—red, green, blue and white/amber—for easy color-mixing control. It has built-in automated, sound-activated and manual playback options and can control fixtures in four different zones—independently of each other. It features one-touch buttons of pre-mixed colors, built-in chases and strobe and dimmer controls.

- DMX Channels: 16
- Input voltage: 9 VDC, 500 mA (external power supply: 100 to 240 VAC, 50/60 Hz)
- Weight: 3 lb (1.4kg)
- Size: 12.8 x 5.5 x 2.1 in (325 x 140 x 52 mm)



### Obey 3

Obey 3 is a compact DMX controller for LED lights with three channels (red, green and blue only). Playback options include automated, sound-activated or manual RGB color mixing.

- DMX Channels: 3
- Input Voltage: 9 VDC, 500 mA (external power supply: 100 to 240 VAC, 50/60 Hz)
- Weight: 2 lb (0.9 kg)
- Size: 5.5 x 8.3 x 2.1 in (140 x 210 x 52 mm)





### Stage Designer 50

Stage Designer 50 is a powerful dimming unit that combines the size of a 24-channel dimming console and the functionality of a 48-channel console. Stage Designer 50 has up to 8 pages with 12 scenes each, and 96,000 programmable steps. The console allows you to re-assign channels as needed and allows for MIDI input.

- DMX Channels: 48
- Input Voltage: 9 VDC, 500 mA (external power supply: 100 to 240 VAC, 50/60 Hz)
- Weight: 9.9 lb (4.5 kg)
- Size: 19 x 10.5 x 3.5 in (483 x 267 x 89 mm)



### DMX-4

DMX-4 is a 4-channel dimmer/relay pack equipped with an automatic ON/OFF when DMX signal is detected. It provides DMX control and/or dimming to units not equipped with DMX on their own. It is optimized for use with small LED fixtures to prevent ghosting and flickering. Each of the 4 sets of outlets (duplex) can be set to any DMX address and independently set as a dimmer or relay. Sixteen user-selectable chase patterns make programming a breeze.

- DMX Channels: 1, 2, or 4
- Input Voltage: 100 to 240 VAC, 50/60 Hz (auto-ranging)
- Weight: 5 lb (2.2 kg)
- Size: 8.3 x 7.7 x 2.8 in (210 x 194 x 70 mm)



### Data Stream 4

Data Stream 4 is a universal DMX-512 optical splitter that distributes the incoming DMX signal, in daisy chain configurations, into four separate outputs with an additional “thru” port.

- DMX Connectors: 3- and 5-pin XLR
- Rackmount: 1U
- Input Voltage: 100 to 240 VAC, 50/60 Hz (auto-ranging)
- Weight: 5.8 lb (2.6 kg)
- Size: 19 x 5.3 x 1.8 in (483 x 134 x 46 mm)



### Foot-C 2

Foot-C 2 is a full-featured compact DMX foot controller with up to 36 channels of control. Create and control a full light show of chases, scenes, fades, and more with just the tap of a foot! Easily change from scene to scene using the up and down pedals and achieve instant blackout with the press of a pedal. Foot-C 2 has guitar pedal-style buttons and a bright and easy-to-read LED display that shows modes, functions, and values to provide convenient and durable access to light shows. Foot-C 2 has included MIDI input for a perfectly timed show and direct audio line input triggers scenes with amazing accuracy. Foot-C 2 is designed to work with fixtures that have up to six channels.

- DMX Channels: 36
- Input Voltage: 12 VDC, 1 A (external power supply: 100 to 240 VAC, 50/60 Hz)
- Weight: 4 lb (1.9 kg)
- Size: 7.2 x 14.2 x 2.6 in (183 x 360 x 66 mm)



20 A Plug

### PRO-D6

PRO-D6 is a 6-channel dimmer/relay pack providing DMX control for on/off or dimming to units not equipped with DMX on their own. Each of the six sets of outlets (duplex) can be set to any DMX address and independently set as a dimmer or relay. Twelve user-selectable chase patterns make programming a breeze.

- DMX Channels: 6
- Input Voltage: 100 to 240 VAC, 50/60 Hz (auto-ranging)
- Weight: 9.3 lb (4.2 kg)
- Size: 18 x 5.8 x 3.8 in (457 x 147 x 97 mm)

NEW



### Data Stream 8

Data Stream 8 is a flexible DMX splitter designed to distribute and boost incoming DMX signals from dual inputs into 8 separate outputs via a master 3-position switch. Each input can be used simultaneously and sent to any output. Individual 2-position switches can also send data from either the A or B input separately. Each of the outputs is optically isolated from the others providing protection in the event of a short. A threaded insert allows the unit to be safely secured to trussing.

- DMX Connectors: 3-pin XLR
- Rackmount: 1U
- Input Voltage: 100 to 240 VAC, 50/60 Hz (auto-ranging)
- Weight: 4.6 lbs (2.1 kg)



## Portable Stands

**NEW**



### CH-03 Tripod

- Stand Height: 7 to 12 ft (2.1 to 3.7 m)
- Bar Diameters: 1.5 in (38 mm)
- Load Capacity: 110 lb (50 kg)
- Weight: 24 lb (10.8 kg)



### CH-06 Tripod

- Stand Height: 9 ft (2.7 m) fully extended
- Load Capacity: 50 lb (22 kg)
- Weight: 11 lb (5 kg)



### CH-31 Truss w/T-bar

- Stand Height: 9 ft (2.7 m) fully extended
- Bar Diameters: 1.5 in (38 mm)
- Load Capacity: 200 lb (90 kg)
- Weight: 60 lb (27 kg)

## Clamps



### CLP-02

Load Capacity:  
55 lb (25 kg)



### CLP-03

Load Capacity:  
44 lb (20 kg)



### CLP-05

Load Capacity:  
110 lb (49.1 kg)



### CLP-06

Load Capacity:  
220 lb (100 kg)



### CLP-10

Load Capacity:  
75 lb (33.5 kg)



### CLP-15

Load Capacity:  
660 lb (295 kg)



### CLP-15N

Load Capacity:  
330 lb (150 kg)



### CLP-25N

Load Capacity:  
550 lb (250 kg)



### CLP-35HC

Load Capacity:  
165 lb (74.8 kg)



### Scissor Clip

Load Capacity:  
3 lb (1.3 kg)

See also Trusst clamps (p.77)

## Cables



### 3-Pin DMX Cable

- Available Lengths:  
5 ft (1.5 m)  
10 ft (3 m)  
25 ft (7.6 m)  
50 ft (15 m)



### DMX3F5M

- 3-pin (F) to 5-pin (M)  
DMX turnaround
- Length: 6 in (154 mm)



### DMX5F3M

- 5-pin (F) to 3-pin (M)  
DMX turnaround
- Length: 6 in (154 mm)



### NEUTRIK® powerCON®

- Available Lengths:  
18 in (45.7 cm)  
5 ft (1.5 m)  
10 ft (3 m)  
25 ft (7.6 m)  
50 ft (15 m)



### CH-05

Load Capacity:  
60 lb (25 kg)



### PLIEC LINKING CABLE

- Male-to-female IEC extension cable
- Available Lengths:  
5 ft (1.5 m)  
25 ft (7.6 m)



### IEC8

- Standard power cable with an IEC connector
- Length: 8 ft (2.4 m)  
(Also available in white)



### NEUTRIK® etherCON®

- Available Lengths:  
18 in (45.7 cm)  
5 ft (1.5 m)  
10 ft (3 m)  
25 ft (7.6 m)  
50 ft (15 m)  
100 ft (30.4 m)

Outdoor Cables See (p. 19)



# CHAUVET 3

## VIP Gear Bags



### VIP Gear Bag CHS-40

#### Fits

Abyss USB  
COLORpalette  
CORE 3x3  
Derby X  
EZwedge Tri  
Gobo Zoom USB  
Rotosphere Q3  
Intimidator Scan 305 IRC  
Kinta FX  
LX5  
Mini Kinta IRC  
Mini Strobe LED  
SlimBEAM Quad IRC  
SlimPANEL Tri-24 IP  
Swarm 4 FX  
Swarm 5 FX  
Swarm Wash FX  
Wash FX 2  
Wedge Tri  
And More!



### VIP Gear Bag CHS-BPK

Multipurpose backpack



### VIP Gear Bag CHS-DUO

#### Fits

Intimidator Spot Duo 155



### VIP Gear Bag CHS-X5X

#### Fits

Intimidator Spot 155  
Intimidator Spot 255 IRC  
Intimidator Spot 255 IRC White



### VIP Gear Bag CHS-FR4

#### Fits

Freedom Par Hex-4  
Freedom Par Tri-6  
Freedom Par Quad-4  
Freedom Par Quad-4 IP



### VIP Gear Bag CHS-SP4

#### Fits

EZpar 56  
SlimPAR 38  
SlimPAR 56  
And More!



### VIP Gear Bag CHS-25

#### Fits

EZpar 56  
EZpar 64 RGBA  
Shocker 90 IRC  
Shocker Panel 180 USB  
SlimPAR 38  
SlimPAR 64  
SlimPAR 64 RGBA  
And More!



### VIP Gear Bag CHS-30

#### Fits

COREpar 80 USB  
COREpar 40 USB  
SlimPAR Pro H USB  
SlimPAR Pro Q USB  
SlimPAR Pro W USB  
SlimPAR H6 USB  
SlimPAR QUV 12 USB  
SlimPAR Q6 USB  
SlimPAR Q12 USB  
SlimPAR T6 USB  
SlimPAR T12 USB  
COREpar UV USB  
And More!



### VIP Gear Bag CHS-50

#### Fits

Intimidator Beam 355 IRC  
Intimidator Spot 355 IRC  
Intimidator Spot 375Z IRC  
Intimidator Trio  
Intimidator Wash Zoom 450  
And More!



### VIP Gear Bag CHS-60

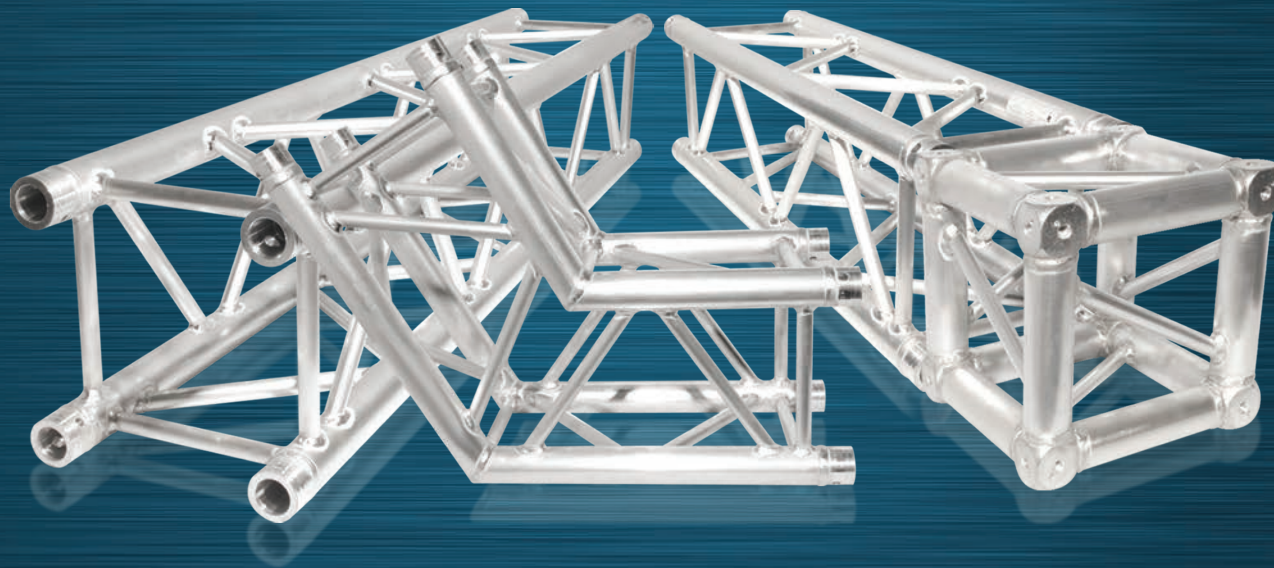
#### Fits

COLORband H9 USB  
COLORband PiX USB  
COLORband PiX-M USB  
COLORband PiX IP  
COLORband T3 USB  
COLORrail IRC  
COLORstrip  
COLORstrip Mini  
And More!

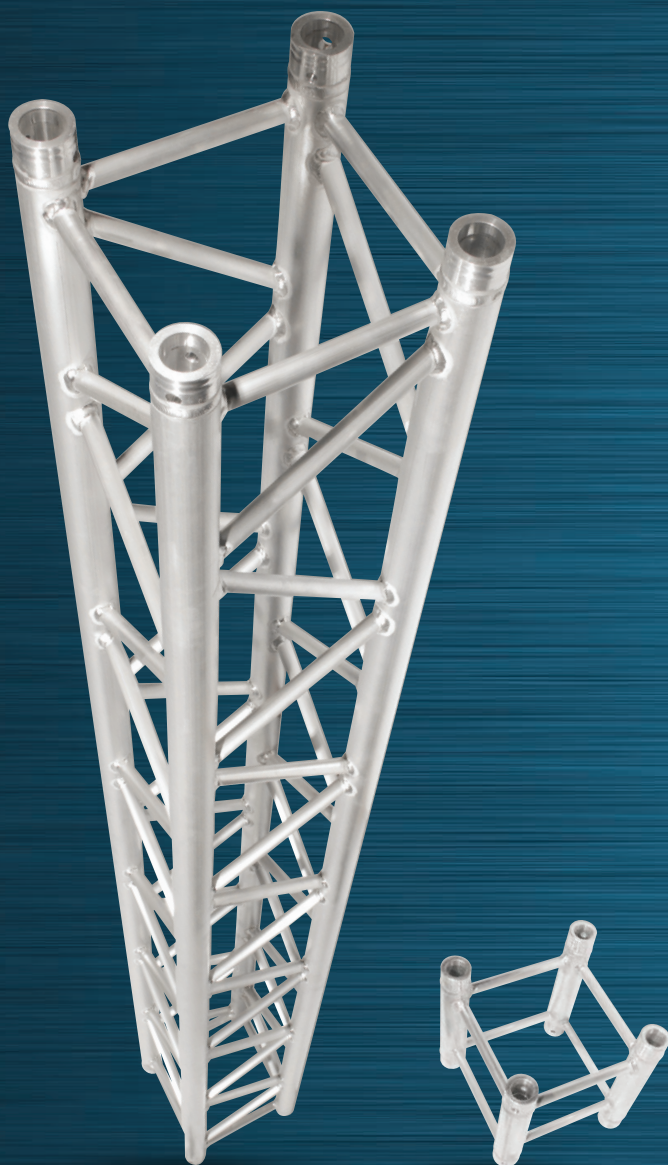




TRUSST offers trussing, clamps, and presentation solutions that add elegance and impact to events and productions while ensuring the highest standards of safety and value. TRUSST trussing systems give you the tools to enhance events and live performances with ease of setup, maximum flexibility, maximum safety and maximum impact. TRUSST offers straight and curved sections, corners, base plates, clamps, and accessories of varied dimensions and configurations to suit most design demands. Our truss sections are made from sturdy 6082-T6 alloy aluminum by certified SLV welders. All sections are inspected and certified to meet stringent TUV safety standards; they work seamlessly with other truss brands that utilize the same standard conical connectors. When speed and convenience are priorities, our portable Goal Post and Arch Kits give you the ability to build your set just about anywhere and quickly. Add even more visual impact and excitement to your show with collapsible and portable Glo Totem kits, and a collection of scrims that add durability and elegance to your truss and stands.







# STRAIGHT SECTIONS

## .25 m (0.82 ft) section

CT290-402S

- Size: 11.42 x 11.42 in (290 x 290 mm)
- Weight: 8 lb (3.7 kg)

## .5 m (1.64 ft) section

CT290-405S

- Size: 11.42 x 11.42 in (290 x 290 mm)
- Weight: 11 lb (5 kg)

## .75 m (2.46 ft) section

CT290-407S

- Size: 11.42 x 11.42 in (290 x 290 mm)
- Weight: 13.9 lb (6.3 kg)

## 1 m (3.28 ft) section

CT290-410S

- Size: 11.42 x 11.42 in (290 x 290 mm)
- Weight: 15.87 lb (7.2 kg)

## 1.5 m (4.92 ft) section

CT290-415S

- Size: 11.42 x 11.42 in (290 x 290 mm)
- Weight: 21.16 lb (9.6 kg)

## 2 m (6.56 ft) section

CT290-420S

- Size: 11.42 x 11.42 in (290 x 290 mm)
- Weight: 26.45 lb (12 kg)

## 2.5 m (8.2 ft) section

CT290-425S

- Size: 11.42 x 11.42 in (290 x 290 mm)
- Weight: 33 lb (15 kg)

## 3 m (9.84 ft) section

CT290-430S

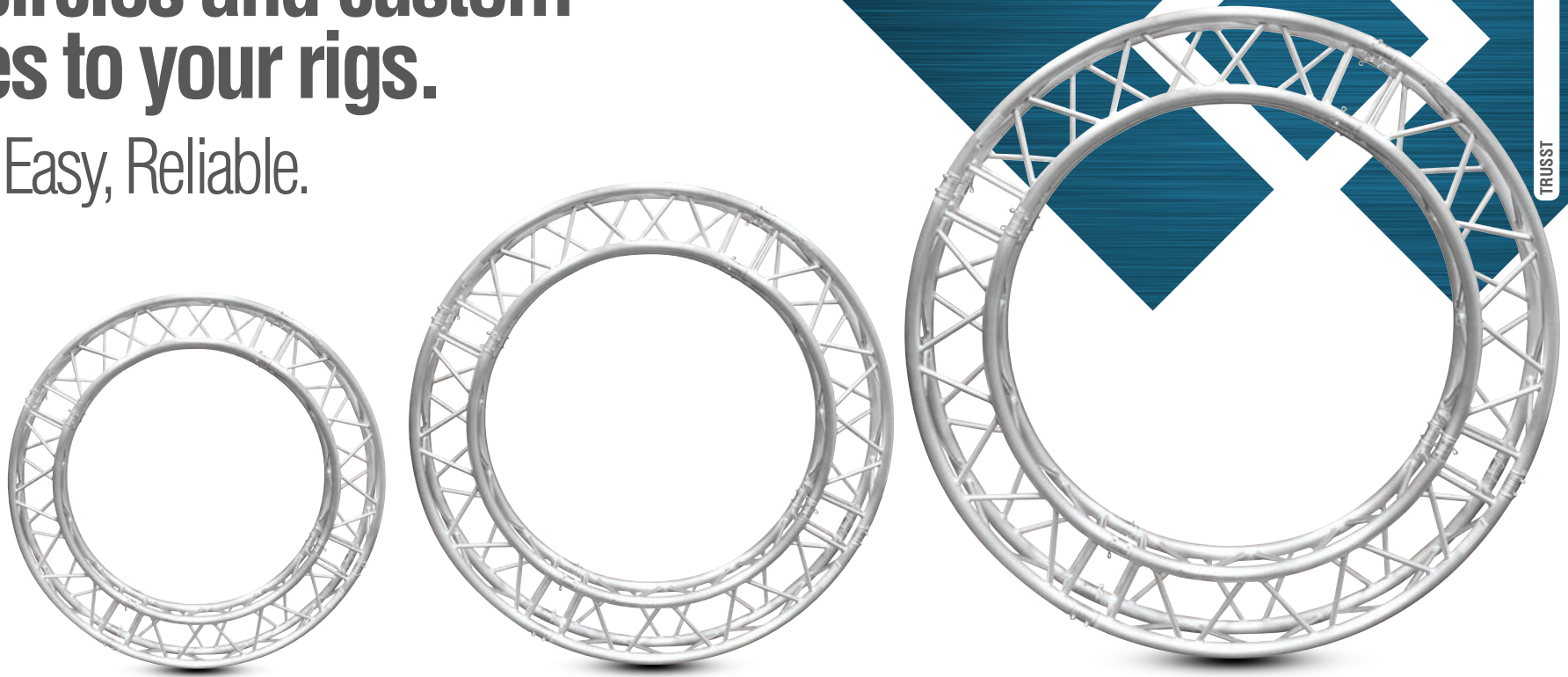
- Size: 11.42 x 11.42 in (290 x 290 mm)
- Weight: 38.58 lb (17.5 kg)





# Add circles and custom arches to your rigs.

Strong, Easy, Reliable.



TRUSST

## ARC SECTIONS

### 3.0 m arc section

CT290-430CIR-90

- Weight: 28.6 lb (13 kg)
- Outside diameter: 9.84 ft (3 m)
- Inside diameter: 8.20 ft (2.5 m)
- Arc: 90°



### 2.0 m arc section

CT290-420CIR-90

- Weight: 21.6 lb (9.8 kg)
- Outside diameter: 6.56 ft (2 m)
- Inside diameter: 4.92 ft (1.5 m)
- Arc: 90°



### 1.5 m arc section

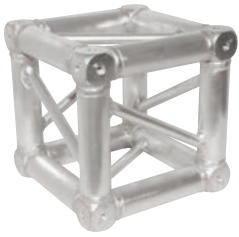
CT290-415CIR-180

- Weight: 21.6 lb (9.8 kg)
- Outside diameter: 4.92 ft (1.5 m)
- Inside diameter: 3.28 ft (1 m)
- Arc: 180°





# CORNERS



## 6-Way Corner

CT290-6WAYC

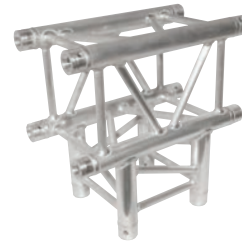
- Size: 11.42 x 11.42 in (290 x 290 mm)
- Weight: 18.30 lb (8.3 kg)



## 3-Way 90° Corner

CT290-4390C

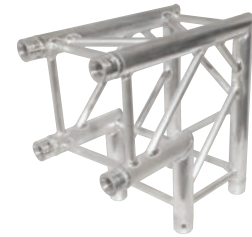
- Size: 11.42 x 11.42 in (290 x 290 mm)
- Weight: 16.53 lb (7.5 kg)



## 3-Way "T" Junction

CT290-43TC

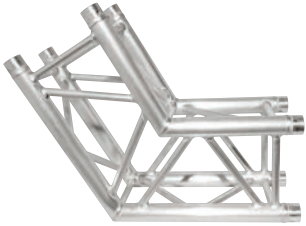
- Size: 11.42 x 11.42 in (290 x 290 mm)
- Weight: 14.33 lb (6.5 kg)



## 2-Way 90° Corner

CT290-490C

- Size: 11.42 x 11.42 in (290 x 290 mm)
- Weight: 12.1 lb (5.5 kg)



## 2-Way 120° Corner

CT290-4120C

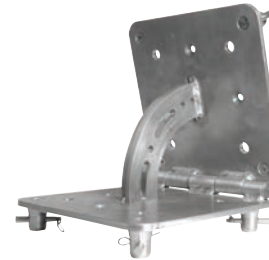
- Size: 11.42 x 11.42 in (290 x 290 mm)
- Weight: 12.12 lb (5.5 kg)



## 2-Way 135° Corner

CT290-4135C

- Size: 11.42 x 11.42 in (290 x 290 mm)
- Weight: 13.93 lb (6.3 kg)



## Versa Hinge

CT290-4VH

- Size: 11.42 x 11.42 in (290 x 290 mm)
- Weight: 18.6 lb (8.5 kg)

# VIDEO MOUNT



## Universal TV Truss Mount

CT-UTVM

- Size: 27.2 x 0.6 x 8.6 in (690 x 15 x 219 mm)
- Weight: 6 lb (2.8 kg)
- Load Capacity: 200 lb
- Mounts 26 to 50" flat panel TVs
- Includes connecting hardware and 2 narrow clamps for 50 mm tubes



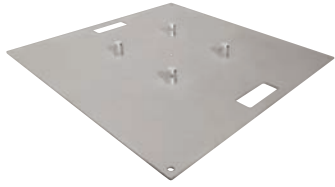
## Adjustable Panel Point

CT-APP

- Size: 25.5 x 1.9 x 5.9 in (650 x 50 x 150 mm)
- Weight: 7.8 lb. (3.5 kg)
- Load Capacity: 1,100 lb. (500 kg)
- Mounts on top of a horizontal truss to create a hang point for video panels or other needs

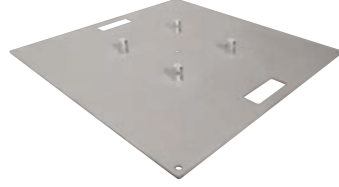


# BASE PLATES



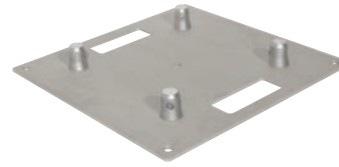
**30 in Base Plate**  
CT290-4130B

- Size: 30 x 30 in (762 x 762 mm)
- Weight: 31.70 lb (14.4 kg)



**24 in Base Plate**  
CT290-4124B

- Size: 24 x 24 in (610 x 610 mm)
- Weight: 21.1 lb (9.6 kg)



**16 in Base Plate**  
CT290-4116B

- Size: 16 x 16 in (406 x 406 mm)
- Weight: 9.0 lb (4.1 kg)



**12 in Base Plate**  
CT290-4112B

- Size: 12 x 12in (144 x 144mm)
- Weight: 7.5 lb (3.4 kg)

# ACCESSORIES



**6-Way Block Connector**  
CT-CONKIT6WAY



**Conical Connector Set**  
CT-CONKIT



**210 mm Spacer**  
CT290-4210SK



**105 mm Spacer**  
CT290-4105SK



**Base Plate Connector Set**  
CT-CONKITB



**Connector Pins**  
CT-PIN12



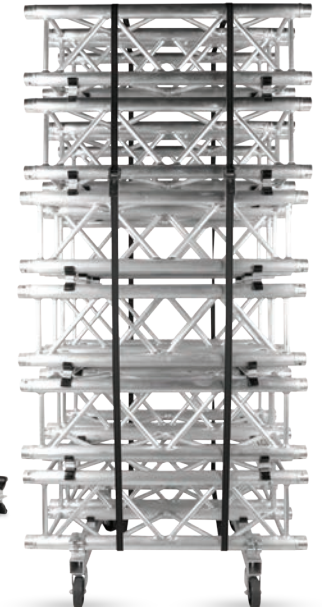
**1 m Pipe**  
CT-40110P



**Speaker Stand Adapter**  
CT-CONSPK

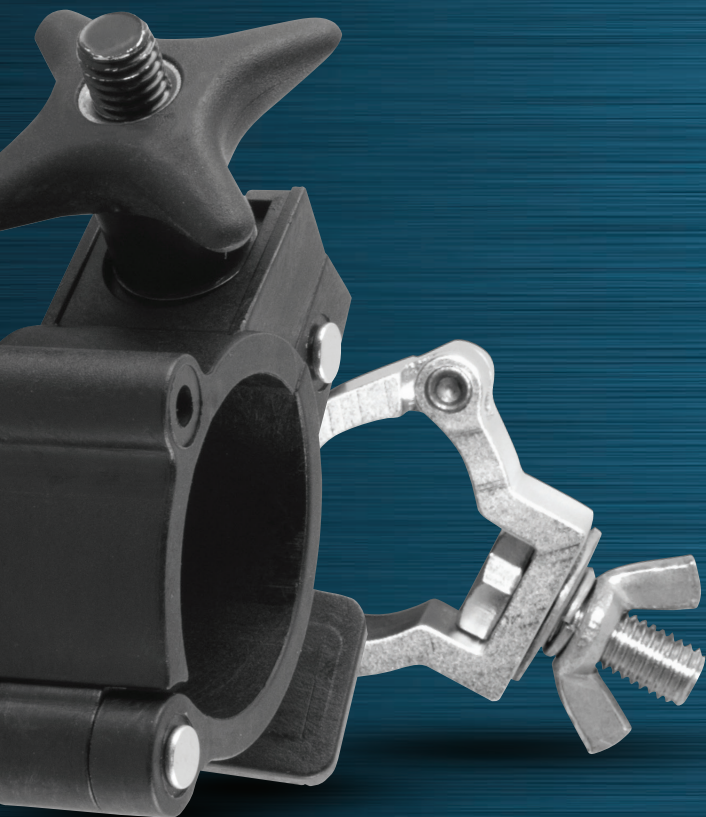


**Dolly Kit**  
CT290-DOLLYKIT



The TRUSST CT290-DOLLYKIT is an all-in-one kit that includes 2 truss dollies, ten truss spacers, and 2 ratchet straps. This lightweight and durable dolly kit easily holds straight truss for damage-free transport or storage. Features include 360° wrap around style clamps, plastic coated saddles to protect against scratches and large, heavy duty rubber coated ball bearing wheels. It safely handles TRUSST CT290 straight sections of any length and any other 290 mm square truss sections.





## CLAMPS



**Swivel Coupler Lockable**  
CTC-50SCL

Load Capacity:  
1,650 lb (750 kg)



**Half-Coupler**  
CTC-50HC

Load Capacity:  
1,650 lb (750 kg)



**Narrow Half-Coupler**  
CTC-50HCN

Load Capacity:  
1,650 lb (750 kg)



**Keder Beam Clamp**  
CT-TENT

Load Capacity:  
330 lb (150 kg)



**35 mm Truss Clamp**  
CLP-35HC

Load Capacity:  
165 lb (75 kg)  
Fits : Goal Post Kit & Arch Kits



**Gripper Clamp**  
CTC-50G

Load Capacity:  
550 lb (250 kg)



**Scrim Clamp**  
CTC-35SCX2

Weight: 0.2 lb (0.1 kg)  
Fits: 1.38-1.5 in (35-38 mm)  
2 clamps per package



# STANDS

## Crank Tower CT-CS60

The TRUSST Crank Tower CT-CS60 is a crank up tower stand with a maximum height of 6 meters (19.7') and the ability to lift and support up to 250 kg (550 lb). Constructed almost entirely of metal, there are no plastic parts to break or strip. As versatile as it is dependable, the crank tower can be easily adjusted to fit multiple sizes of truss. Other features include rubber-coated feet and polyurethane wheels that protect flooring surfaces from scratches.

- Weight: 242 lb (110 kg)
- Load Capacity: 550 lb (250 kg)
- Max Height: 19.7 ft (6 m)
- Base Footprint: 7.5 x 7.5 ft (2.2 x 2.2 m)



## Crank Stand CT-CS30

The TRUSST Crank Stand CT-CS30 is a lightweight tripod stand with a sturdy all metal construction, geared towards production companies and mobile entertainers. It uses an internal cable winch to support and raise truss, speakers, and lights with ease. The tension knob and safety pin prevent the mast load from coming down uncontrollably in case of cable failure. The crank winch has a built-in brake and a folding handle for safety and ease of use. The M12 threaded top hole accepts a TRUSST CTC-50HC clamp to easily support lighting bars. An included adjustable T-bar adaptor fits multiple truss sizes. A 35 mm top mast allows for direct attachment of a speaker cabinet-no adaptor needed. Hard rubber feet help protect flooring surfaces from scratches. Comes fully assembled.

- Weight: 33 lb (15 kg)
- Load Capacity: 132 lb (60 kg)
- Tube diameter: 35mm (1.4in)
- Height: 5.64 to 9.84 ft (1.72 to 3.0 m)



Shown with included T-bar supporting 2 m truss (not included) and as speaker stand.

## CHS-TR3 Gear Bag

The TRUSST CHS-TR3 bag is designed to carry a tripod or crank stand. It allows you to protect your investment with a strong ballistic nylon exterior and interior padding. It easily transports your gear using 2 conveniently placed handles. It has an exterior zipper pouch that fits accessories or a T-Bar adaptor.

- Size: 66 x 9 x 9 in (1,680 x 230 x 230 mm)
- Compatible products: CT-CS30, CH-02, or CH-06
- Compartments: 2
- Weight: .7 lb (0.3 kg)



CHS-TR3 carry bag sold separately

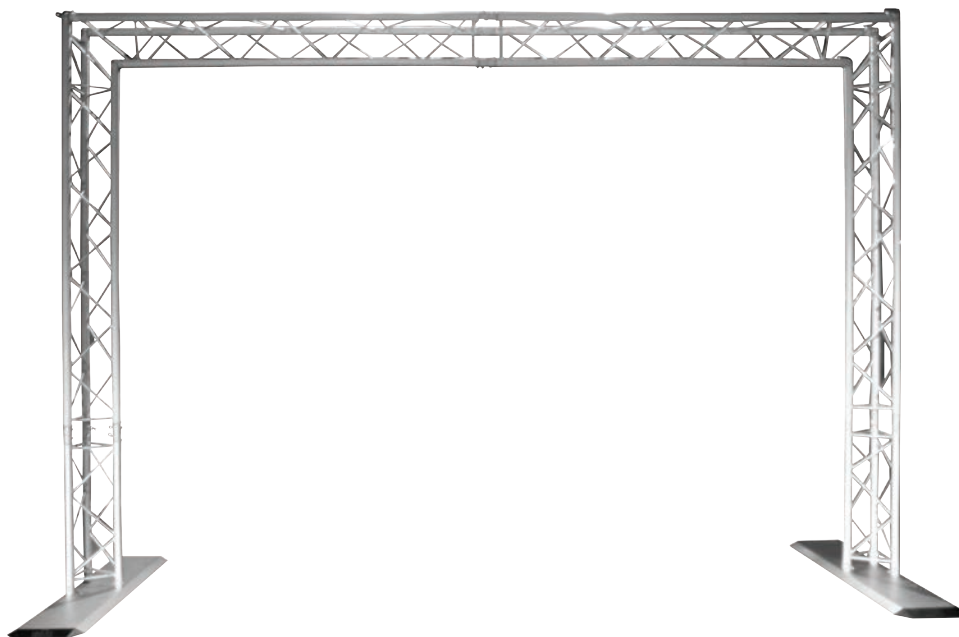


# KITS

## Goal Post Kit

The TRUSST Goal Post Kit provides the perfect location to mount lights and hang backdrops such as the popular MotionDrape LED, for a professional presentation. It assembles in minutes using numbered sections. For added value and versatility, the lightweight aluminum truss can be assembled at 2 different heights. To simplify transportation, use the optional, custom-designed TRUSST CHS-Goal bag to carry the entire kit on the road.

- Size (assembled): 11.2 x 3.8 x 7.7 ft (3.4 x 1.1 x 2.3 m)
- Weight: 98 lb (44.4 kg)



Quick Release Pin System



## QUICK TRUSS HARDWARE

### QT-Conical

TRUSST QT-CONICAL replaces lost or misplaced conical connectors used to assemble the TRUSST QT-GOAL Kit.

- Weight: 1 lb (0.45 kg)
- 4 conical connectors

### QT-Pin12

TRUSST QT-PIN12 replaces lost or misplaced spigots and cotter pins used to assemble the TRUSST QT-GOAL Kit and QT-ARCH Kit.

- Weight: 1 lb (0.45 kg)
- 12 Spigots
- 12 Cotter Pins



### QT-Snap

TRUSST QT-SNAP replaces lost or misplaced snap pins used to assemble the TRUSST QT-GOAL Kit and QT-ARCH Kit.

- Weight: 1 lb (0.45 kg)
- 6 Snap Pins





# GLO TOTEMS

TRUSST Glo Totems are all-in-one collapsible and portable Totem kits that make it easier than ever to add an extra dimension of elegance and excitement to your show. Available in 3 sizes (1.5 m, 2 m, and 2.5 m), each system includes 4 tubes, top and bottom plates, fire retardant scrim, carry bag for tubes, and all connecting hardware. Made of lightweight aluminum for easy transportation, setup, and breakdown, they assemble with the same conical connection system as other TRUSST products. Stress-free assembly with no screws or tools, additional mounting holes for lighting fixtures, and convenient integrated carrying handles in the bases make these a perfect addition to your rig.



## 2 m Glo Totem

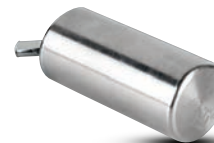
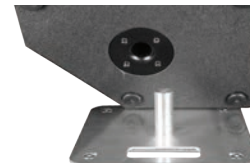
- Size (Top Plate): 11.8 in x 11.8 in (300 x 300 mm)
- Weight: 39.2 lb (17.8 kg)
- Length: 6.56 ft (2 m)
- Size (Base Plate): 23.6 x 23.6 in (600 x 600 mm)



Carry Bag Included

## CT-CONSPK

This TRUSST Totem speaker adaptor allows you to mount a speaker securely and safely on top of a truss Totem. The speaker stand adaptor eliminates the need for ratchet straps or zip-ties to secure the speaker, for a clean, professional look. Made of solid aluminum with a M10 threaded hole in the base, it includes an M10 bolt and washer for attachment to the Totem top plate. The adaptor is 1 3/8 in (35mm) in diameter and 3 in (75mm) long and accommodates most standard speaker stand mounts.





# SCRIMS

## 2 m Truss Scrim CT-SC20W

- Weight: 0.6 lb (0.3 kg)
- Length: 6.56 ft (2.0 m)

Shown with 2 m stick (sold separately)  
Convenient carry bag Included



## Speaker Stand Scrim CT-SCDUO

- Weight: 0.6 lb (0.3 kg)
- Height: 4 to 7 ft (1.2 to 2.1 m)
- Leg width: 3.5 to 4.5 ft (1 to 1.4 m)

Tripod not included  
Convenient carry bag Included





Scrim Clamp  
CTC-35SCX2

The Scrim Clamp allows you to attach the top of a tripod scrim securely and safely to the upright pole of any tripod stand. The Scrim Clamp eliminates the need for zip-ties or other less than optimum attachment methods for a clean, secure, professional look.

For complete specifications, (See page 66).



LOAD RATING CHARTS

CT290 truss sections are manufactured using 50 mm (1.97”) diameter x 2 mm (.08”) wall main tube and 20 mm (.79”) x 2 mm (.08”) wall diagonal tube, 6082-T6 aluminum alloy. The box truss is 290 mm x 290 mm (11.42” x 11.42”) square.

IMPERIAL

Span (feet)	3.28	6.56	9.84	13.12	16.40	19.69	22.97	26.25	29.53	32.81	36.09	39.37	42.65	45.93	49.21	52.49
Center load (ls)	6103.3	4567.8	3037.7	2270.8	1808.7	1499.1	1276.7	1108.9	977.3	871.3	783.5	709.9	646.8	592.2	544.1	501.6
Deflection (inches)	0.04	0.12	0.28	0.51	0.83	1.18	1.61	2.09	2.64	3.27	3.94	4.69	5.51	6.38	7.32	8.35
Uniform load (ls)	6103.3	6094.5	6075.5	4541.5	3616.7	2998.7	2554.1	2217.0	1954.4	1741.7	1566.6	1420.7	1292.6	1185.2	1088.0	1001.8
Deflection (inches)	0.04	0.16	0.35	0.67	1.02	1.46	2.01	2.60	3.31	4.06	4.92	5.87	6.89	7.99	9.17	10.43

Loading figures only valid for static loads and spans with two supporting points. If dynamic loads or wind loads are involved, or more supporting points are applied, contact a structural engineer.

METRIC

Span (m)	1	2	3	4	5	6	7	8	9	10	11	12	13	14	15	16
Center load (kg)	2768.4	2071.9	1377.9	1030.0	820.4	680.0	579.1	503.0	443.3	395.2	355.4	322.0	293.4	268.6	246.8	227.5
Deflection (mm)	1	3	7	13	21	30	41	53	67	83	100	119	140	162	186	212
Uniform load (kg)	2768.4	2764.4	2755.8	2060.0	1640.5	1360.2	1158.5	1005.6	886.5	790.0	710.6	644.4	586.3	537.6	493.5	454.4
Deflection (mm)	1	4	9	17	26	37	51	66	84	103	125	149	175	203	233	26.5

For complete specifications, visit [TRUSST.com](https://www.trusst.com) | Specifications subject to change without notice.





[ChauvetDJ.com](http://ChauvetDJ.com) | [TRUSST.com](http://TRUSST.com)



Global Headquarters  
5200 NW 108th Ave., Sunrise, FL 33351 USA

Chauvet Europe  
Stokstraat 18, 9770 Kruishoutem, Belgium  
Brookhill Road Industrial Estate  
Pinxton, Nottingham NG16 6NT, United Kingdom

California Branch  
7555 N. San Fernando Road  
Burbank, CA 91505 USA

Chauvet México  
Av. de las Partidas 34 – 3B  
Zona Industrial Lerma  
Lerma, Estado de México, CP 52000

For complete specifications, visit [ChauvetDJ.com](http://ChauvetDJ.com) | All products meet CSA and CE standards. Specifications subject to change without notice.